



Resilient Hampton

Downtown Hampton, Phoebus & Buckroe Water Plan

City Council Briefing

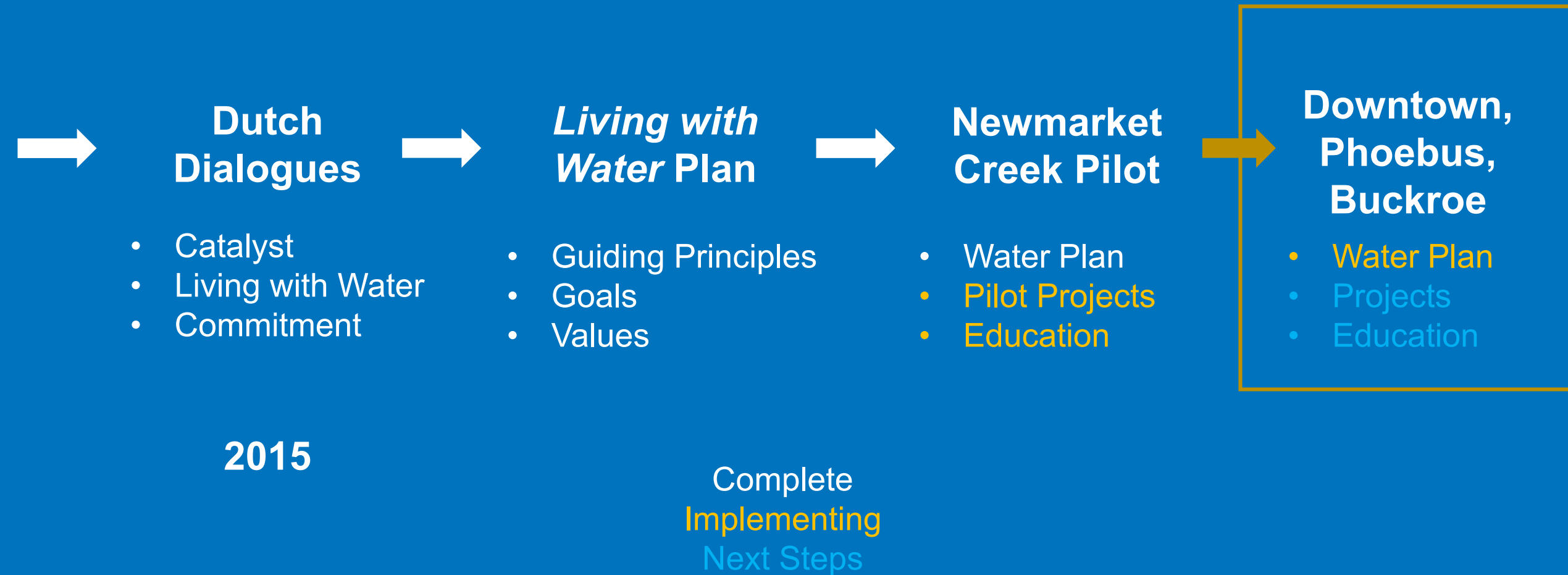
May 25, 2022

Agenda

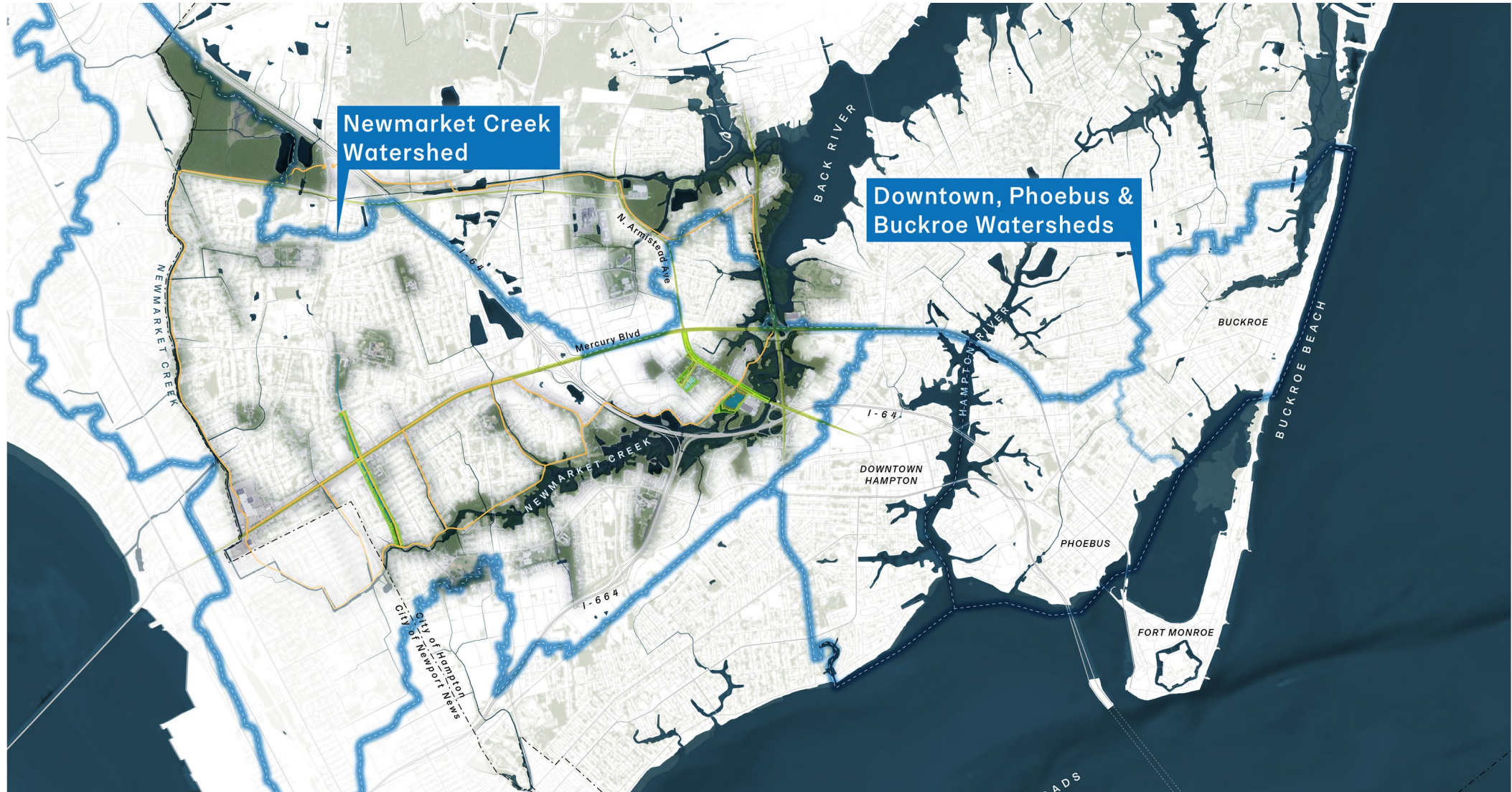
- Water Plan Overview
- Data and Feedback - Findings & Directions
- Identified Themes & Strategies
- Community Feedback



Resilient Hampton Timeline



Expanding Watershed Planning

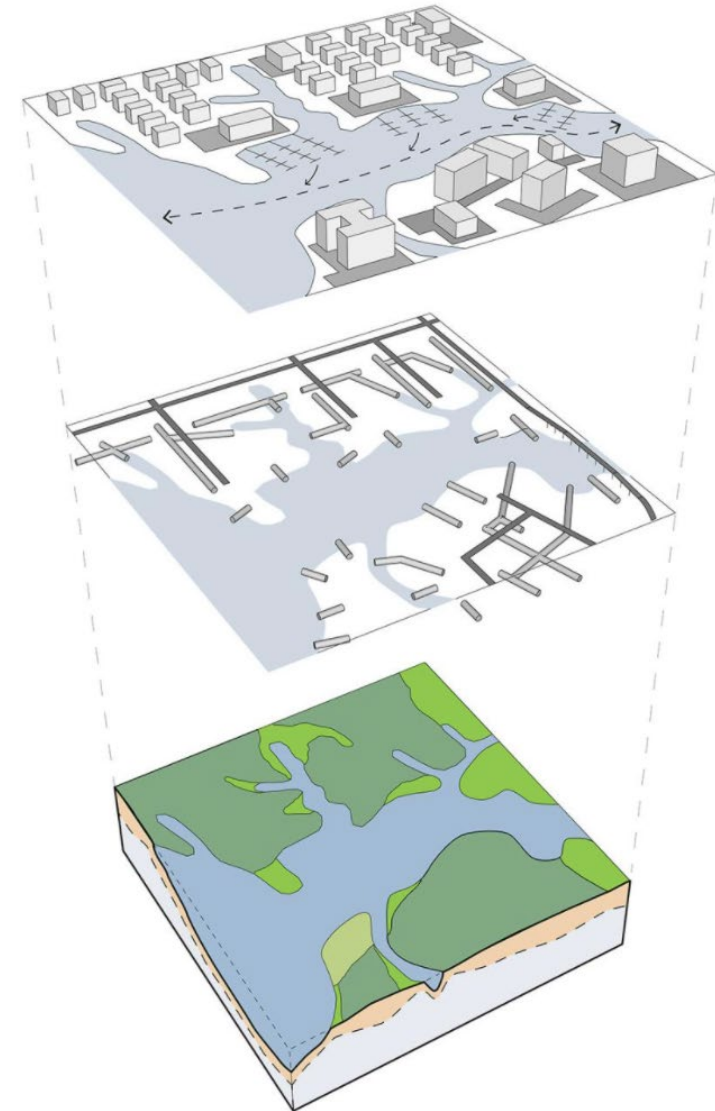


Water Plan Purpose

Analyzes the landscape and challenges, both physical & social

Establishes a vision for the future of the resilient watershed

Identifies & presents projects to achieve the vision

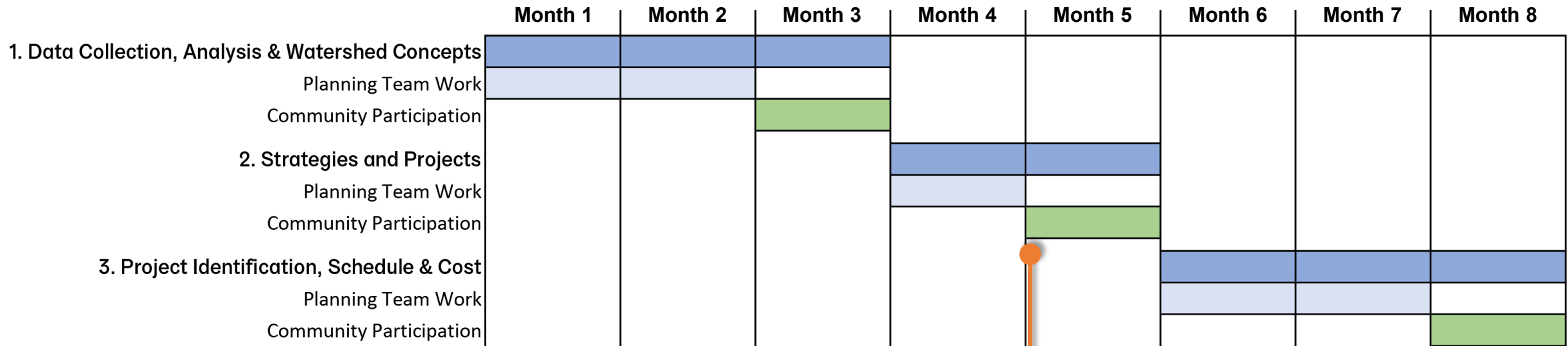


Water Planning Principles

- In the long term it is more effective to **work along with the system** instead of working against the system.
- A water-based approach requires a **larger perspective**, in **scale** as well in **time**. You need a regional approach and a dot at the horizon.
- You need the courage to **think big**, and the guts to **act small**.

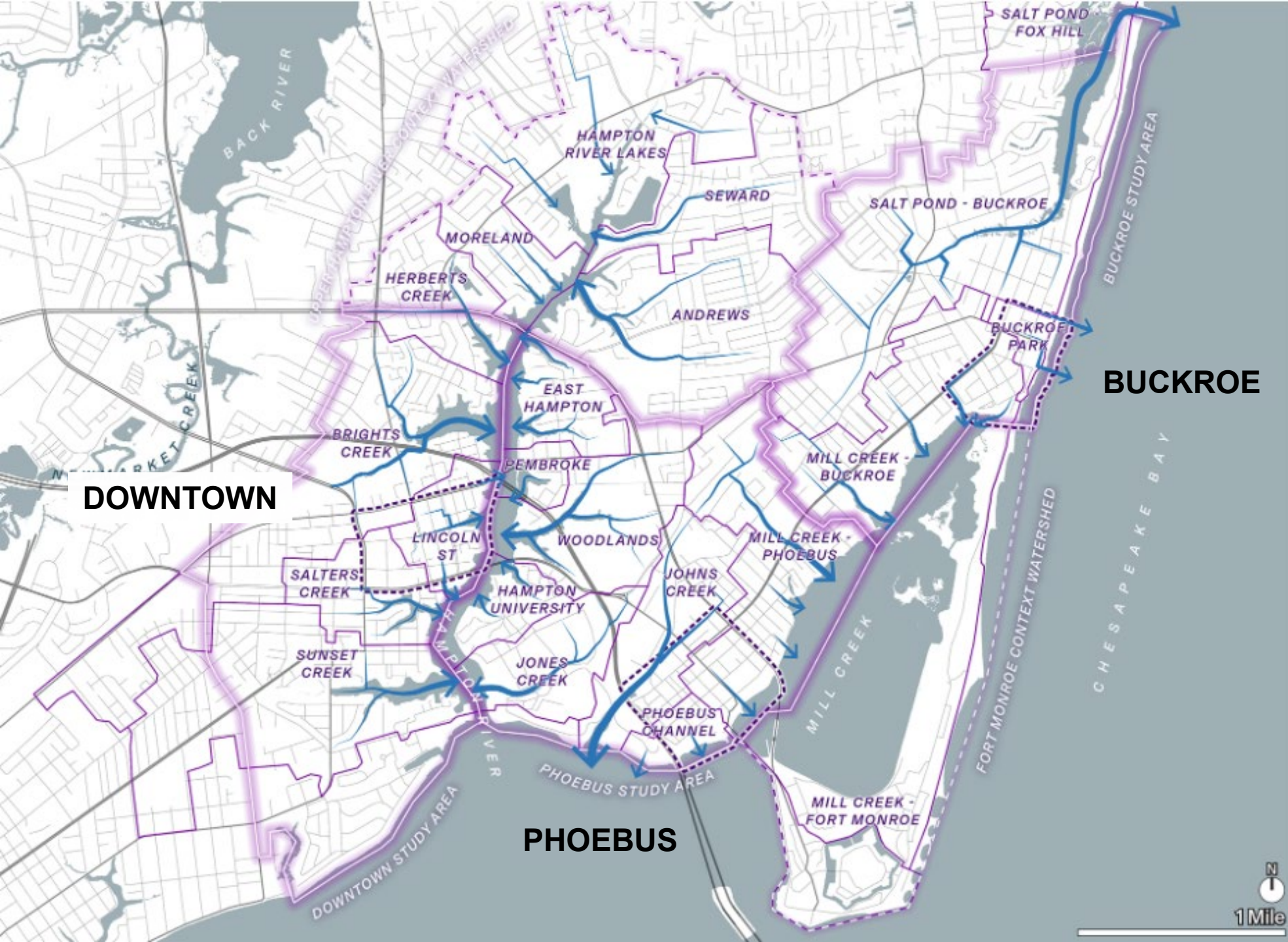


Water Plan Schedule



WE ARE HERE

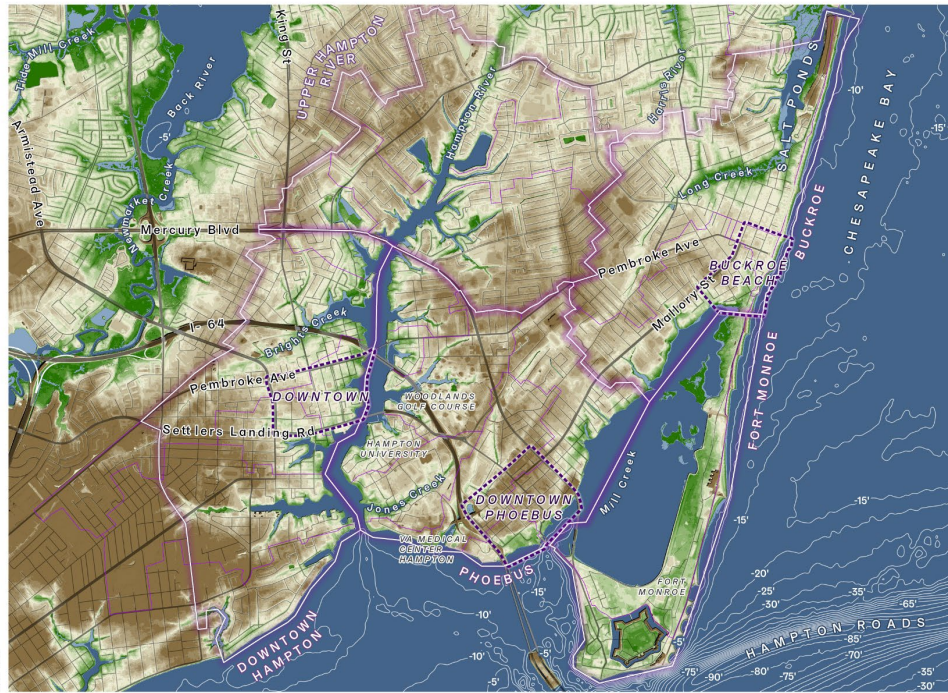
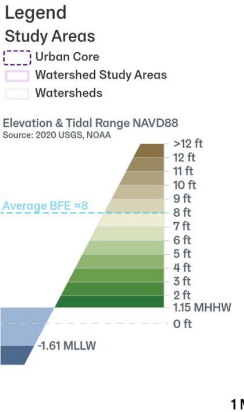
Watershed Planning Areas



Elevation + Depressions

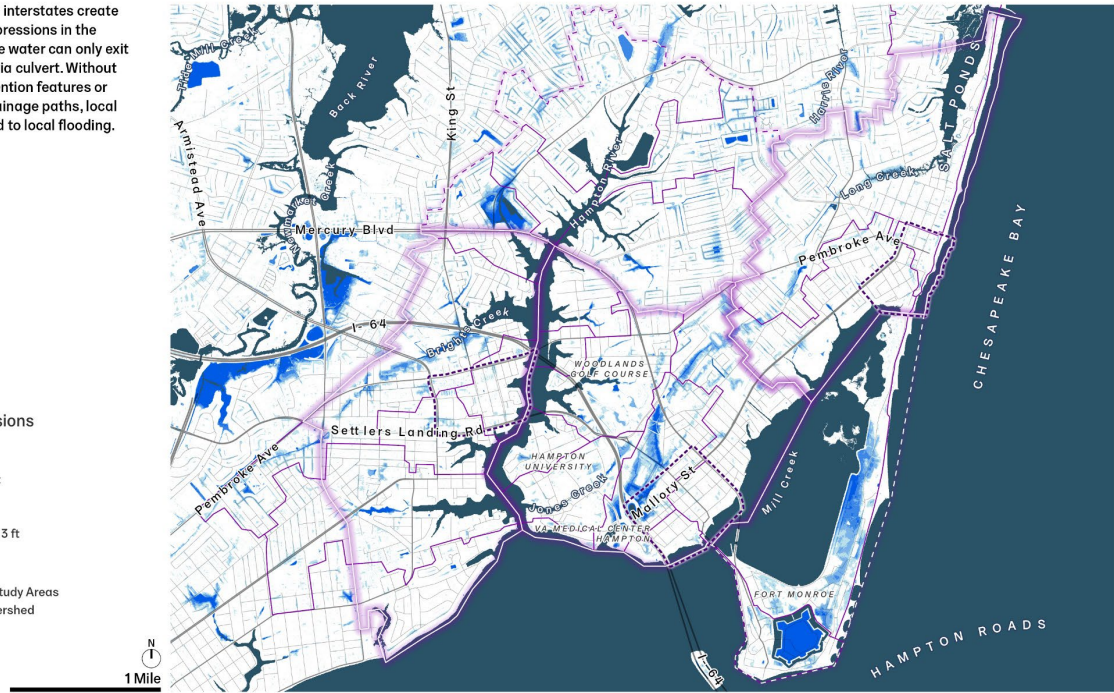
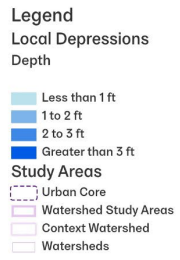
Elevation Combined Project Area

Land in Hampton quickly rises a few feet above sea level as it moves away from the water's edge, but plateaus after that. Most of the land in Hampton is less than 10 feet above sea level. Ridges in Phoebus contain some of the highest elevations in the combined project area, with small creeks separating areas of high ground.

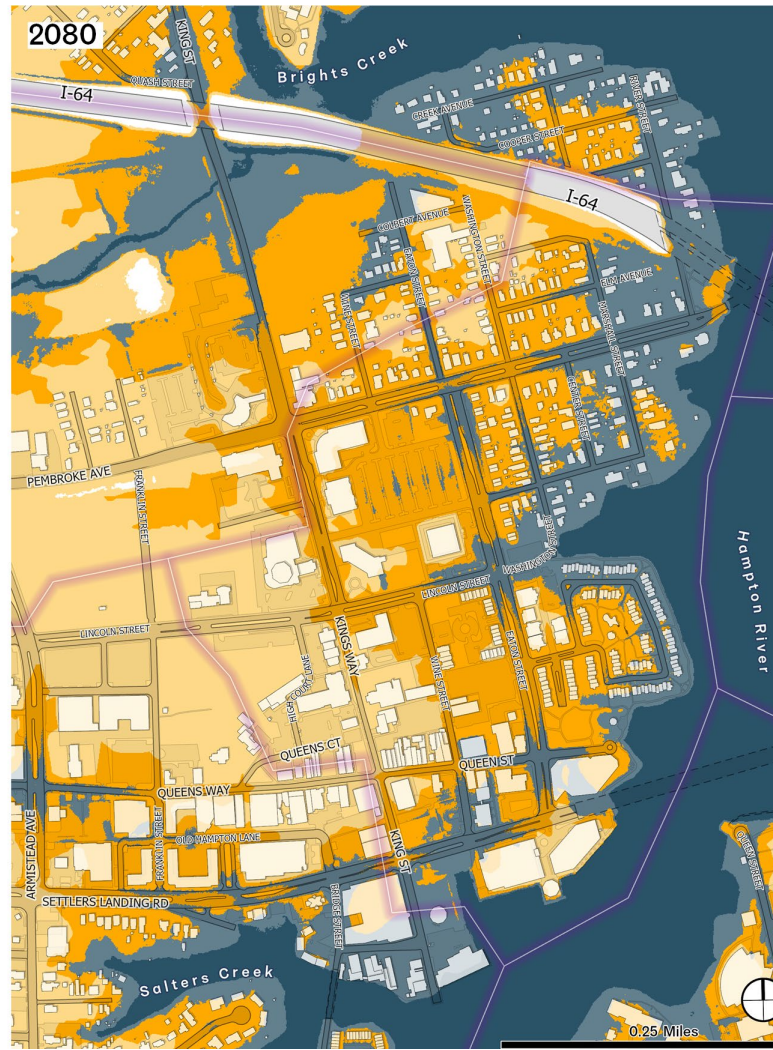
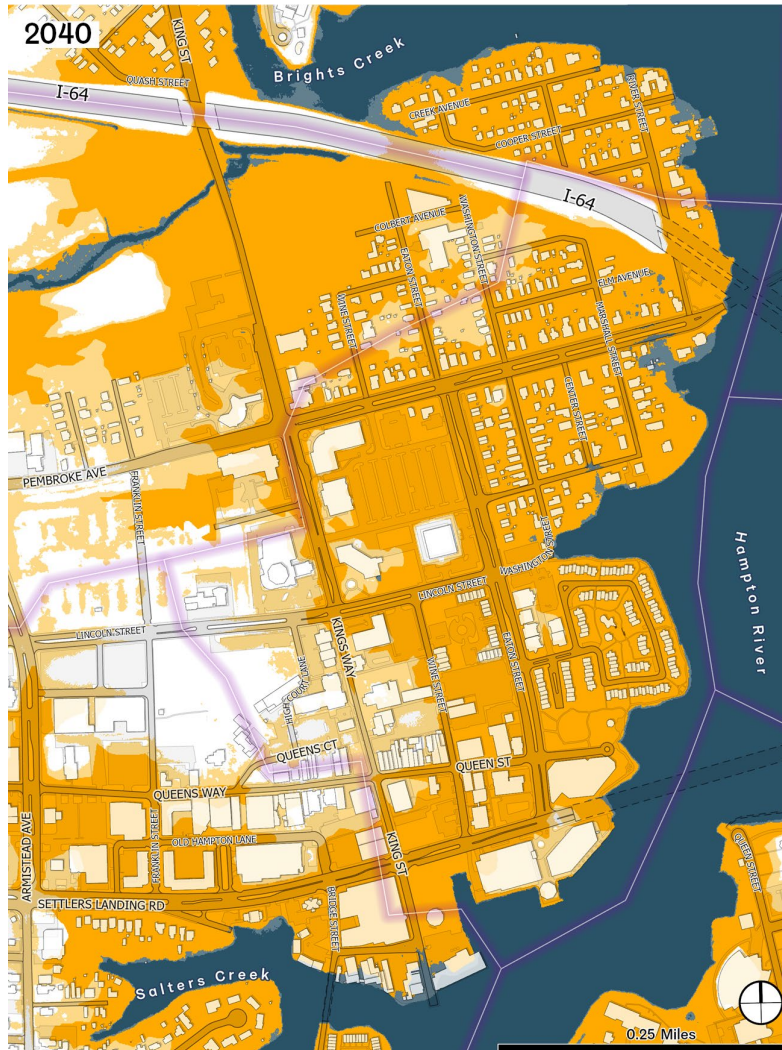


Local Depressions Combined Project Area

Major roads and interstates create several local depressions in the study area where water can only exit the depression via culvert. Without stormwater detention features or underground drainage paths, local depressions lead to local flooding.



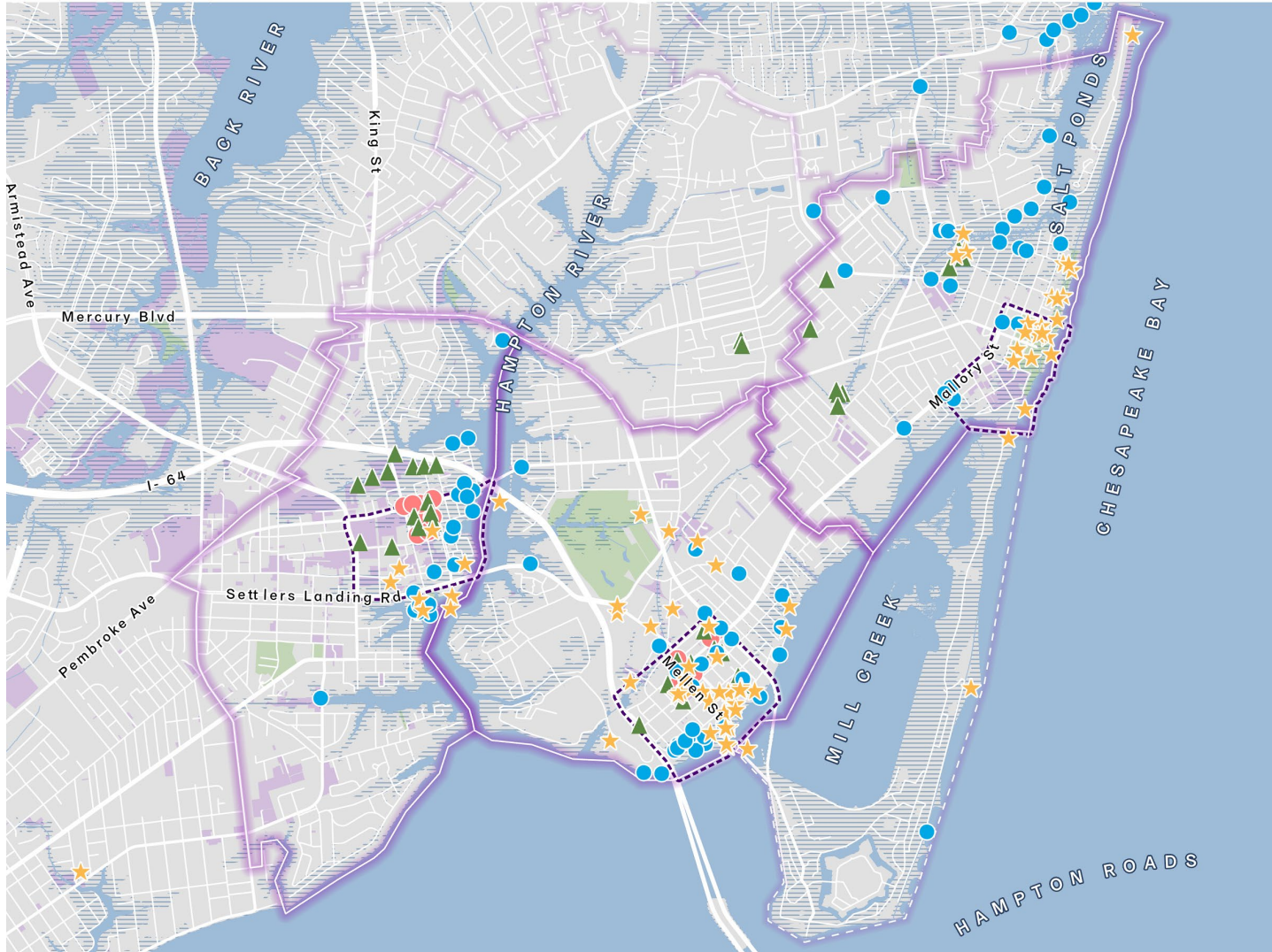
Projected 1% Annual Flood Risk



Based on current available scientific forecast, without intervention.

2040 → 2080

Community Mapping + Input



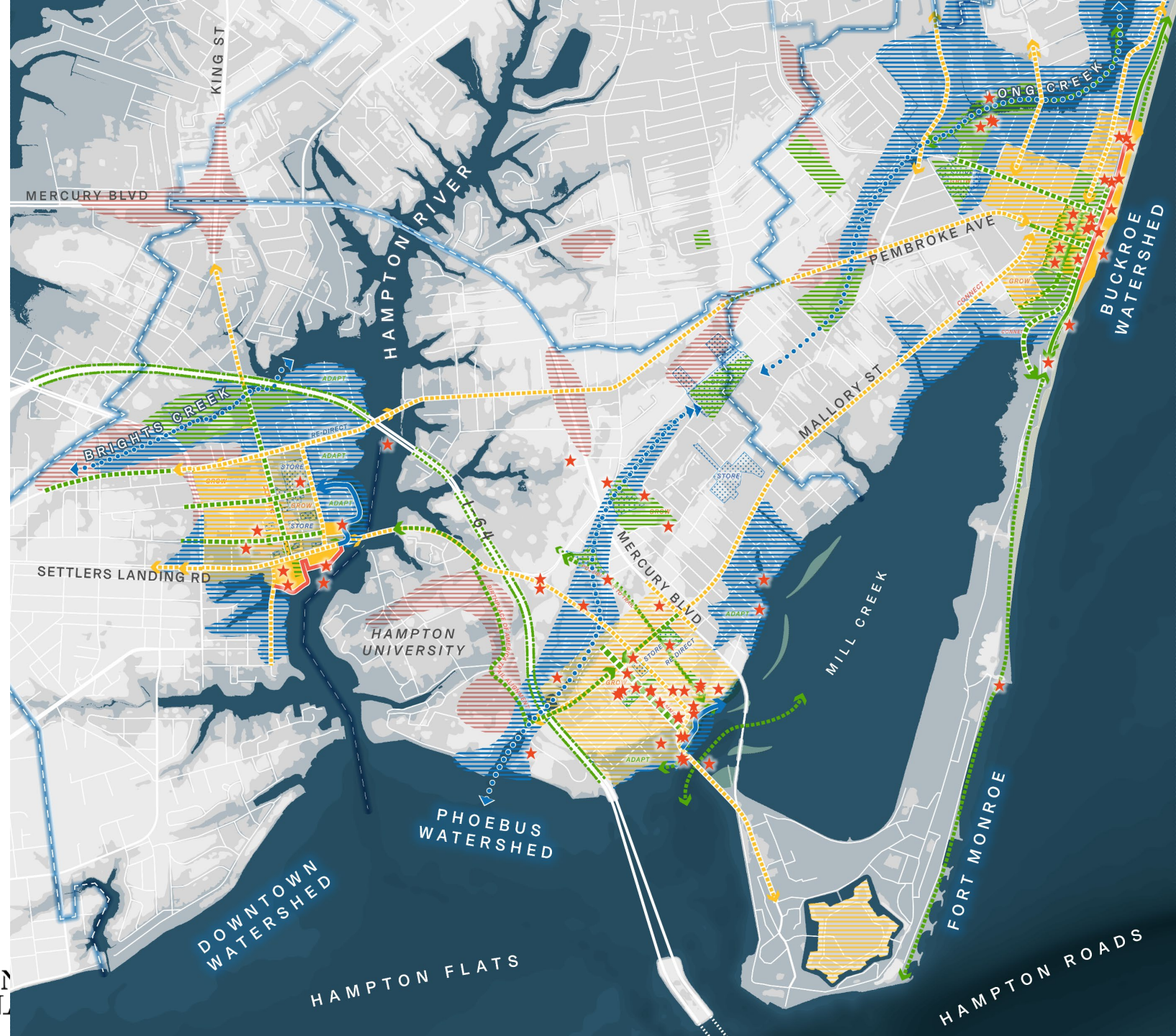
**You are the expert on
your neighborhood.**

Tell us...

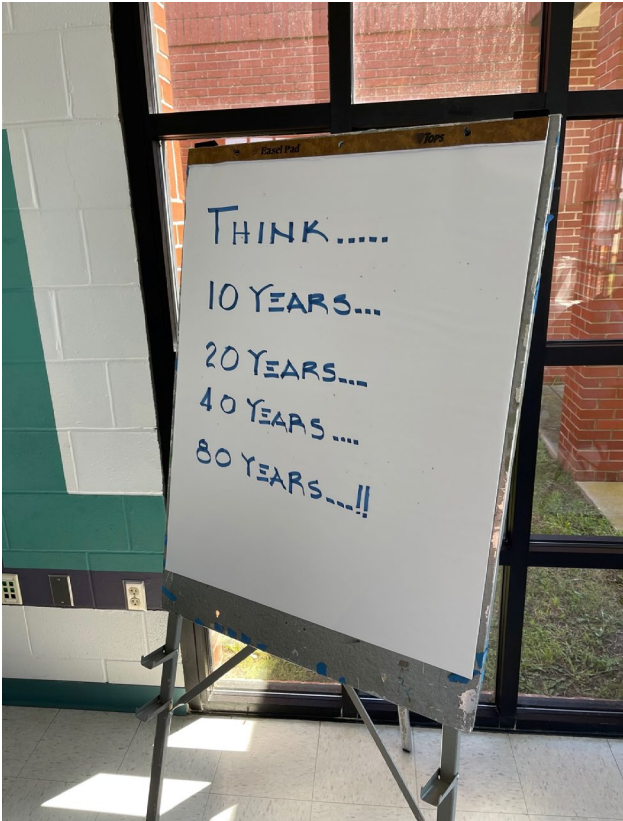
- ★ What community assets do you care about?
- 🌊 Where have you experienced flooding?
- 🔥 Where does it get too hot?
- 🌲 Where could we plant more trees?

Feedback Synthesis

- Reduce paving, increase tree cover
- Maintain existing character
- Prioritize working waterfront
- Utilize empty or vacant parcels, including to create floodable park space
- Create vegetated shorelines
- Clean and expand ditches
- Create mixed-use spaces and increase walkability
- Address stormwater-driven flooding through infrastructure improvements
- Connect Downtown to other areas of the City

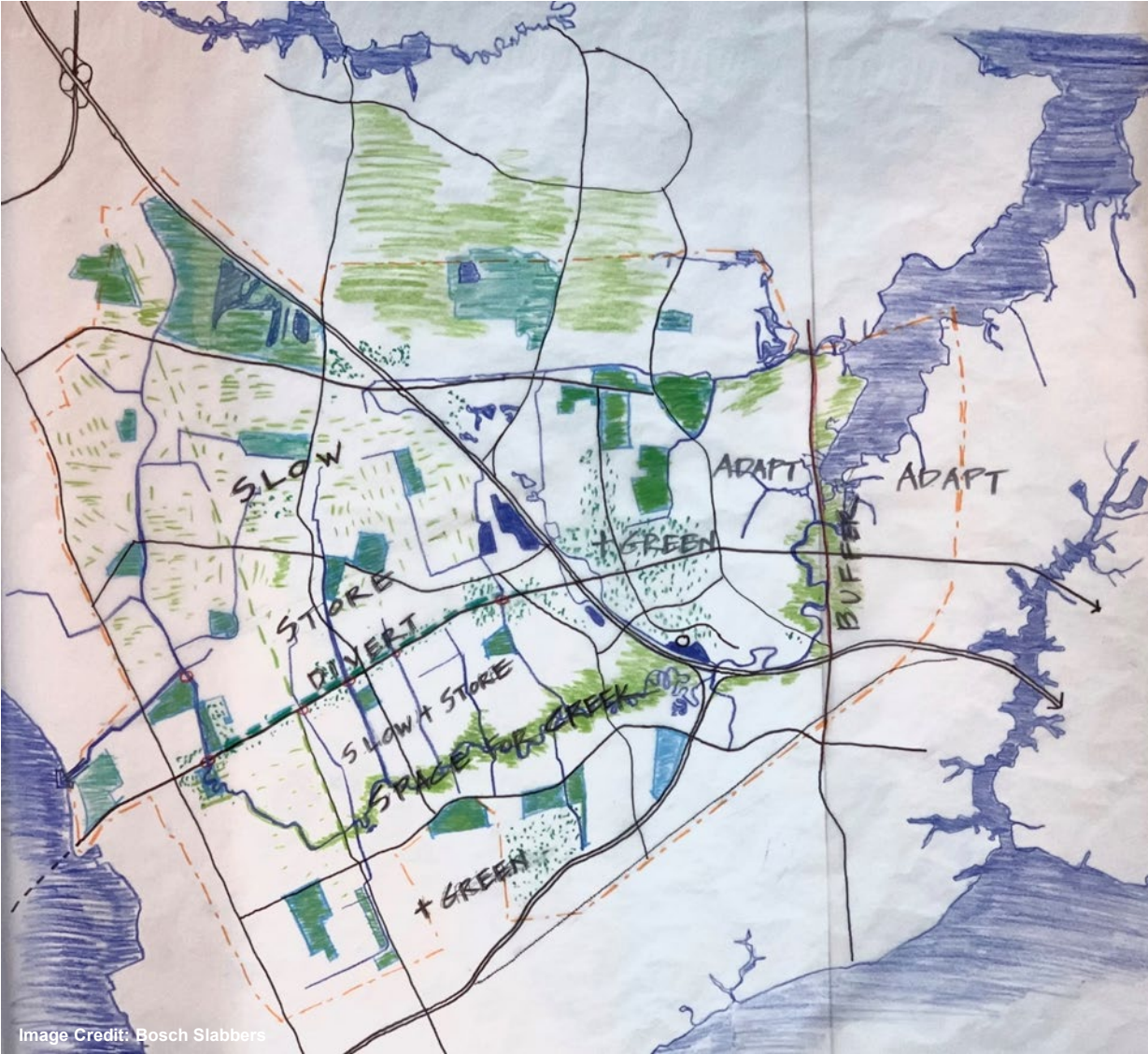


Collaborative Design Workshop



May 16th-18th, 2022 at Fort Monroe Community Center

Newmarket Creek Watershed Vision



Key Themes

- Influence of History
- Sustainable, Community-Driven Growth
- Cores and Connectivity
- Public Access to Water
- Concerns with Flooding

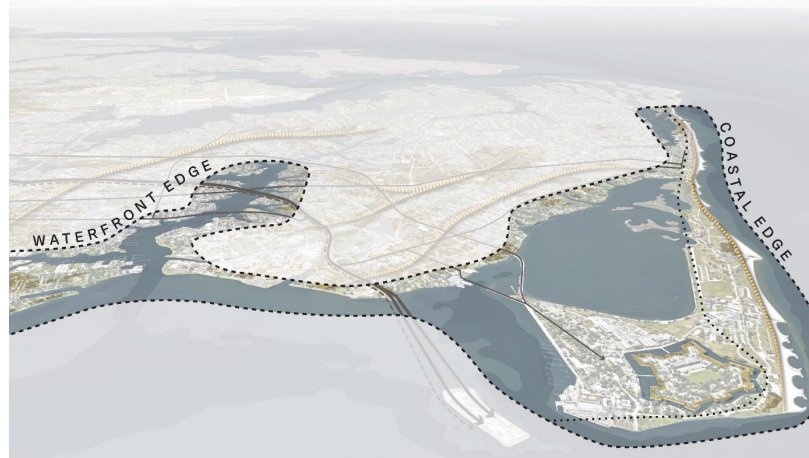


Watershed



- Work from High Ground to Low Land
- Stormwater Issues
- Impervious Surfaces, Canals, Waterways,
- Slow, Store, Redirect, and Adapt Strategies

Water's Edge



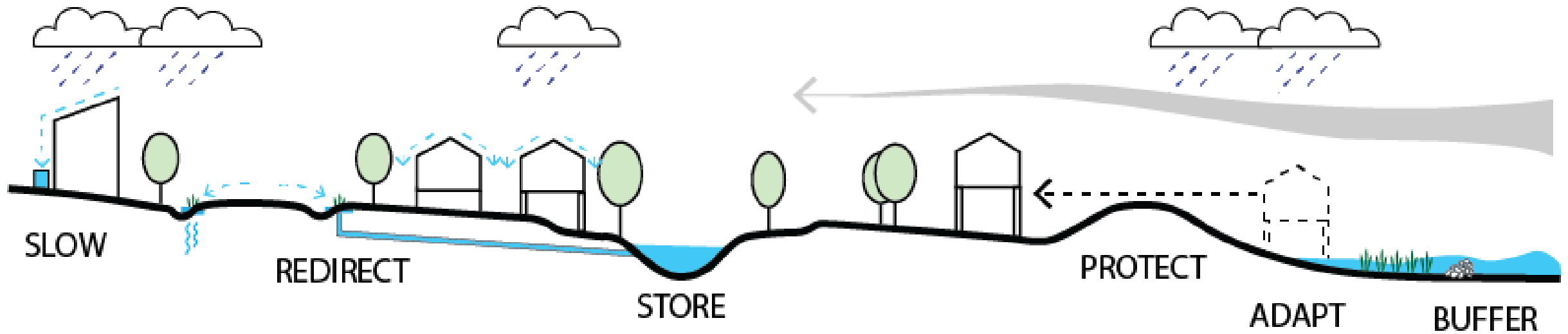
- Work from water to land
- Interface at Bay, River, Creek, Wetland Edges
- Adapt, Buffer, and Protect Strategies

Cores + Connections



- Development Drivers and Patterns
- Corridors and Urban Cores
- I-64, Birthplace of America Trail
- History, Character, and Identity

Resilient Strategies



Watershed Wide Strategies Map



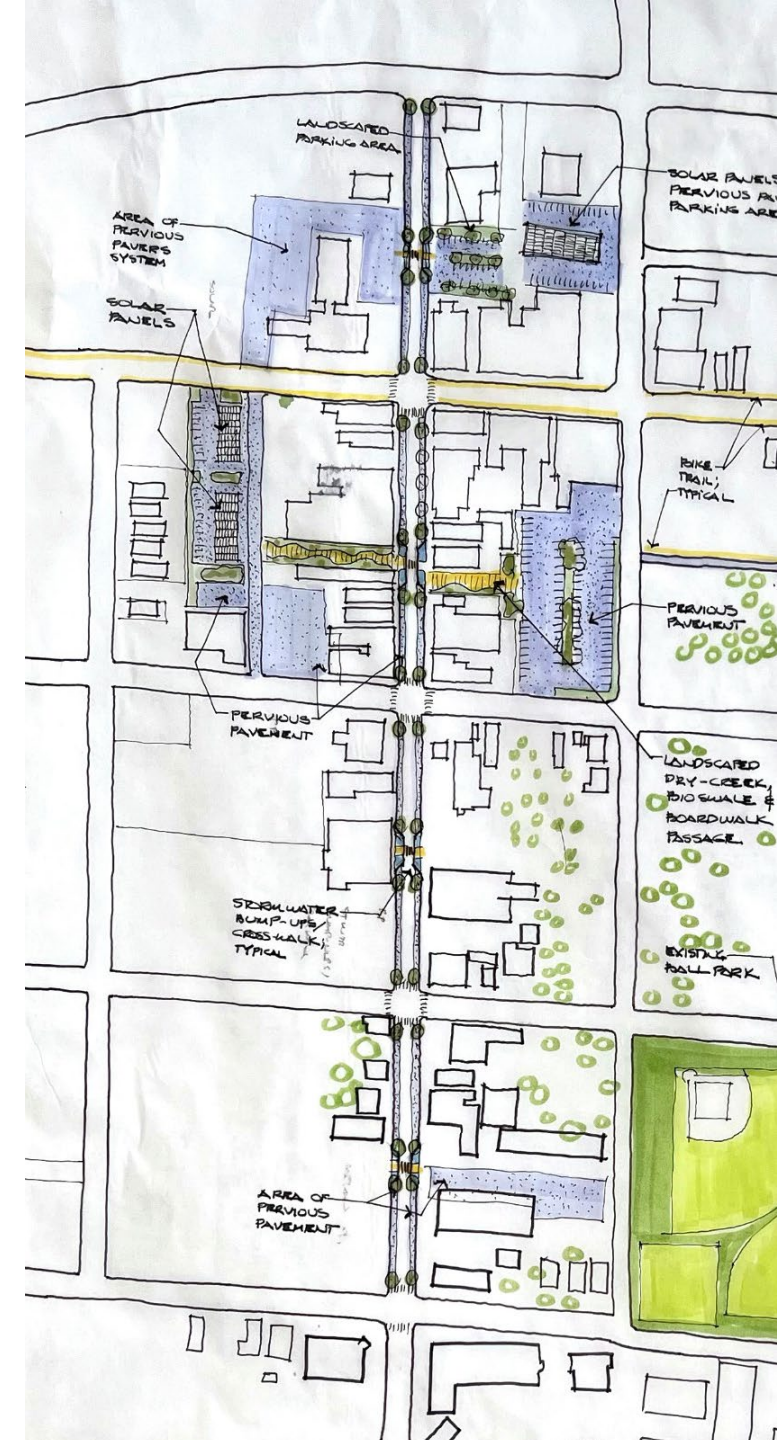
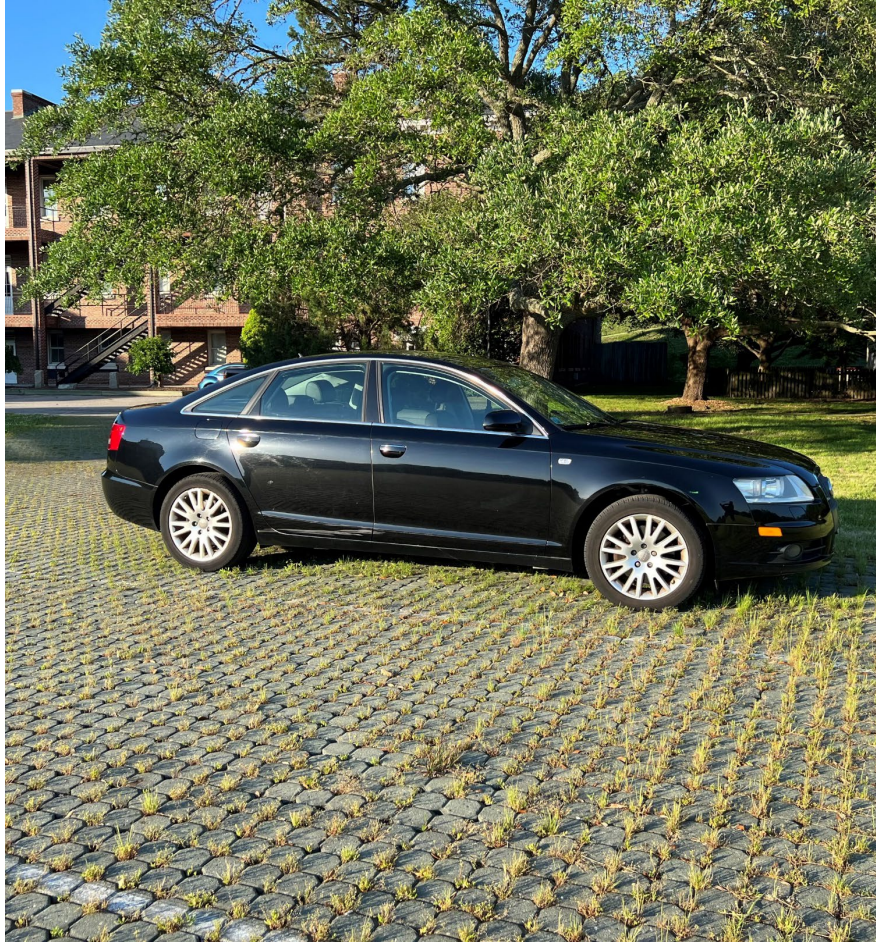
Preliminary Project Ideas

1. Long Creek Blueway
2. Beachfront Protection – Fort Monroe to Salt Pond Inlet
3. Connect Buckroe to Fort Monroe
4. Mellen Green Street
5. Phoebus Rail Trail
6. Phoebus Living Shoreline Expansion & Mill Creek Restoration
7. Mallory St. Corridor
8. North Phoebus Blueway (John's Creek)
9. Hampton River Crossing
10. Downtown Riverfront Protection
11. Bright's Creek Gateway
12. Downtown Water Management District
13. King Street Raising
14. Eason Park and Sunset Creek Storage
15. Adaptation Zones

Policies and Programs

- Develop resilient **land use policies**
- Create and enforce **development standards** and guidelines
- Encourage **community engagement** and education
- Develop a robust program around **natural infrastructure**, including a tree canopy plan
- Create a system for resiliency **data management**
- Address **grid reliability** and create **resilience hubs**
- Create a **parking strategy** to prioritize resilience goals

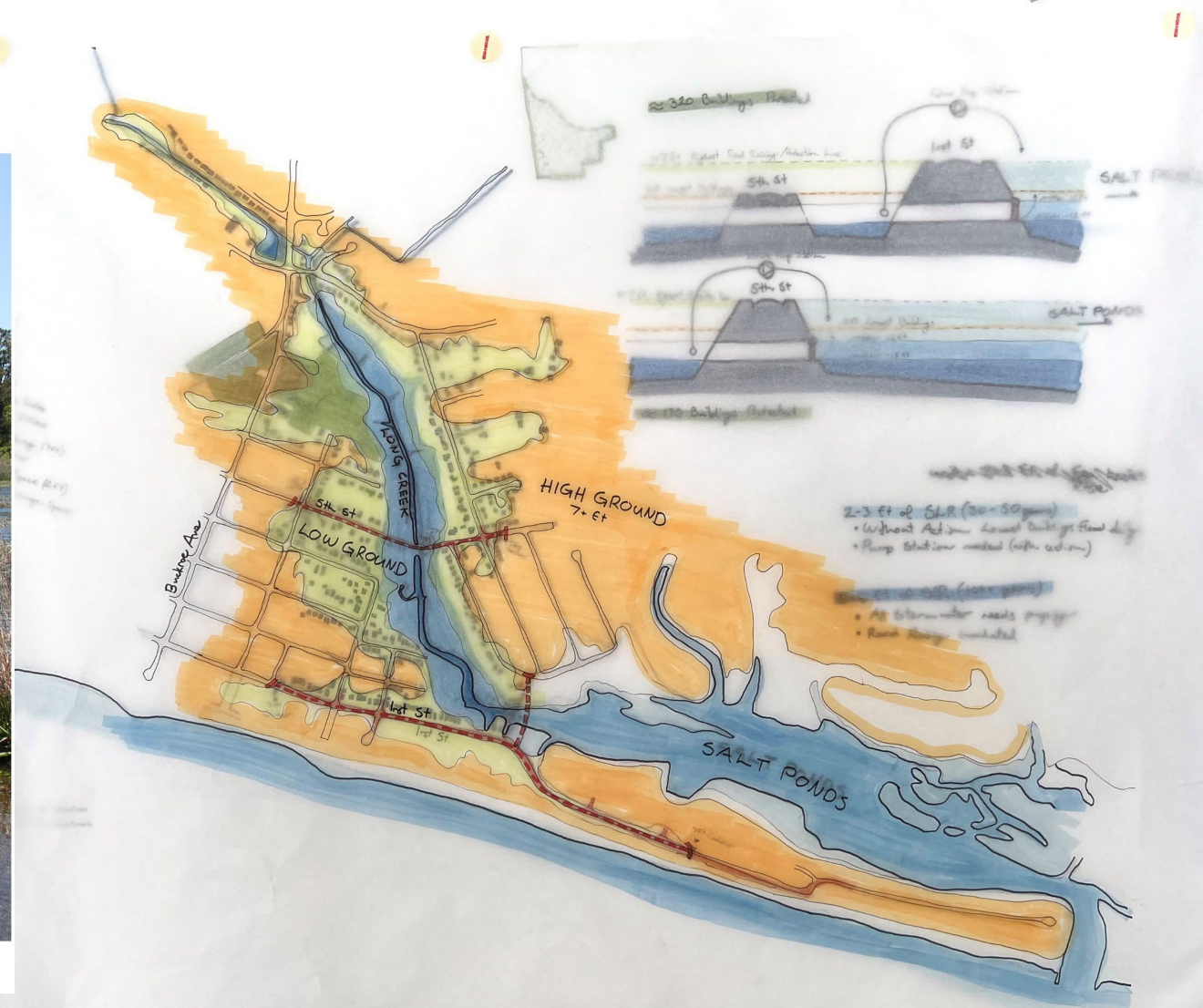
Mellen Green Street / Parking Strategy



Long Creek Blueway



Recent Flooding at 5th Street at Long Creek



Downtown

Hampton River Crossing

Downtown Riverfront
Protection

Bright's Creek Gateway

Downtown Water
Management District

King Street Raising

Eason Park and Sunset
Creek Storage



Beachfront Protection



Community Meeting Participation

- Remember: **this work is preliminary!**
We need your guidance for where to focus.
- **Dream big** and **share your ideas** for creating an optimistic, exciting, adapted future in these neighborhoods.
- Keep in mind Resilient Hampton's **mission** and **values**.



Initial Community Feedback

- Support adaptation measures for individual residents.
- Draw clear connections between existing plans and infrastructure and proposed changes.
- Share data and findings transparently with the public.
- Use the plan to create resilient policies around land use and development standards.
- Continue to use nature-based interventions.
- Create more physical connections to increase access between different areas.
- Protect public water access.
- Prioritize funding resiliency work.
- Prioritize addressing existing flooding concerns.



Next Steps

- **Continue to collect feedback** from the public on design workshop outcomes
- **Meet with key stakeholders** to discuss and test project concepts
- Refine, develop, and prioritize project concepts
- Present full draft plan to council and the public



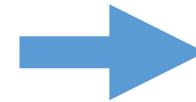
Public Feedback Collection

Details on these ideas will be posted online at:

<https://arcg.is/1a5uKq>

We are collecting feedback online via a feedback form:

<https://form.jotform.com/221315096126045>





Questions?



Thank you!

Carolyn Heaps, Resiliency Officer

resilient@hampton.gov

www.hampton.gov/resilient



WAGGONER
& BALL



This project received funding from the Virginia Community Flood Preparedness Fund Grant Program through the Virginia Department of Conservation and Recreation (DCR), via CFPF-21-01-20-S.