

TIMMONS GROUP

YOUR VISION ACHIEVED THROUGH OURS.

May 21, 2017

Mr. Walter Tanner
I Can Child Care & Learning Center, LLC.
3355 Commander Shepard Boulevard
Hampton, Virginia 23666

**RE: Preliminary Wetland & Resource
Protection Area Assessment
I Can Child Care & Learning Center
+/- 1.9 Acres
City of Hampton, Virginia**

Dear Mr. Tanner,

Timmons Group senior environmental scientist Ethan Virts conducted a site visit at the prospective I Can Child Care & Learning Center site (Site) in Hampton, Virginia, on May 12, 2017. The purpose of the Site visit was to determine the presence or absence of potential jurisdictional waters of the U.S. (WUS), including streams and wetlands, within the proposed project limits. The potential for resource protection areas associated with the Chesapeake Bay Preservation Act to extend onto the property was also evaluated during the site visit.

The presence of approximately 0.04 acre of palustrine forested (PFO) wetlands was found to be present in the northeast corner of the project limits. The approximate size and location of this wetland area is depicted in the attached Preliminary Jurisdictional Waters of the U.S. and Resource Protection Areas Assessment Map. This small wetland area meets the hydric soil, hydrophytic vegetation, and hydrology parameters required to be deemed a jurisdictional wetland by the U.S. Army Corps of Engineers (COE).

The parcel located to the north of the project limits contains a significant amount of PFO wetlands. These offsite wetlands drain to a culvert under Pioneer Drive which is located northwest of the project limits. The wetlands located down grade of the culvert at Pioneer Drive are functioning as tidal wetlands. However the PFO wetland areas up-grade of the culvert that extend onto the northeast corner of the Site are non-tidal wetlands. The presence of the culvert under Pioneer Drive and the fact that the wetlands located up-grade of the culvert are non-tidal should preclude any resource protection areas from extending onto the project limits.

The attached Preliminary Jurisdictional Waters of the U.S. and Resource Protection Area Assessment Map denotes the approximate location of potential jurisdictional wetland area and the absence of a Resource Protection Area. These findings represent Timmons Group's professional opinion regarding the extent of jurisdictional WUS and wetlands and resource protection areas onsite. A formal resource protection area determination, waters of the U.S delineation, and subsequent confirmations from appropriate regulatory entities, should be performed to confirm these findings. The mapped areas are approximate in location, shape, and size, and are subject to change pending a wetland delineation and jurisdictional

determination by the COE. The COE is the regulatory agency responsible for issuing jurisdictional determinations on wetlands and WUS. The City of Hampton is the responsible government entity for the review and approval of resource protection area determinations. Jurisdictional determinations are generally valid for a period of five years from the date of issuance and are required prior to applying for a COE or a permit for conducting any regulated activity that may directly or secondarily impact jurisdictional wetlands or streams.

If you should have any questions or require any additional information, please call me at (804) 200-6414 or email at ethan.virts@timmons.com.

Respectfully,
Timmons Group



Ethan Virts, PWD, PWS, CPSS
Senior Environmental Scientist

Enclosures:

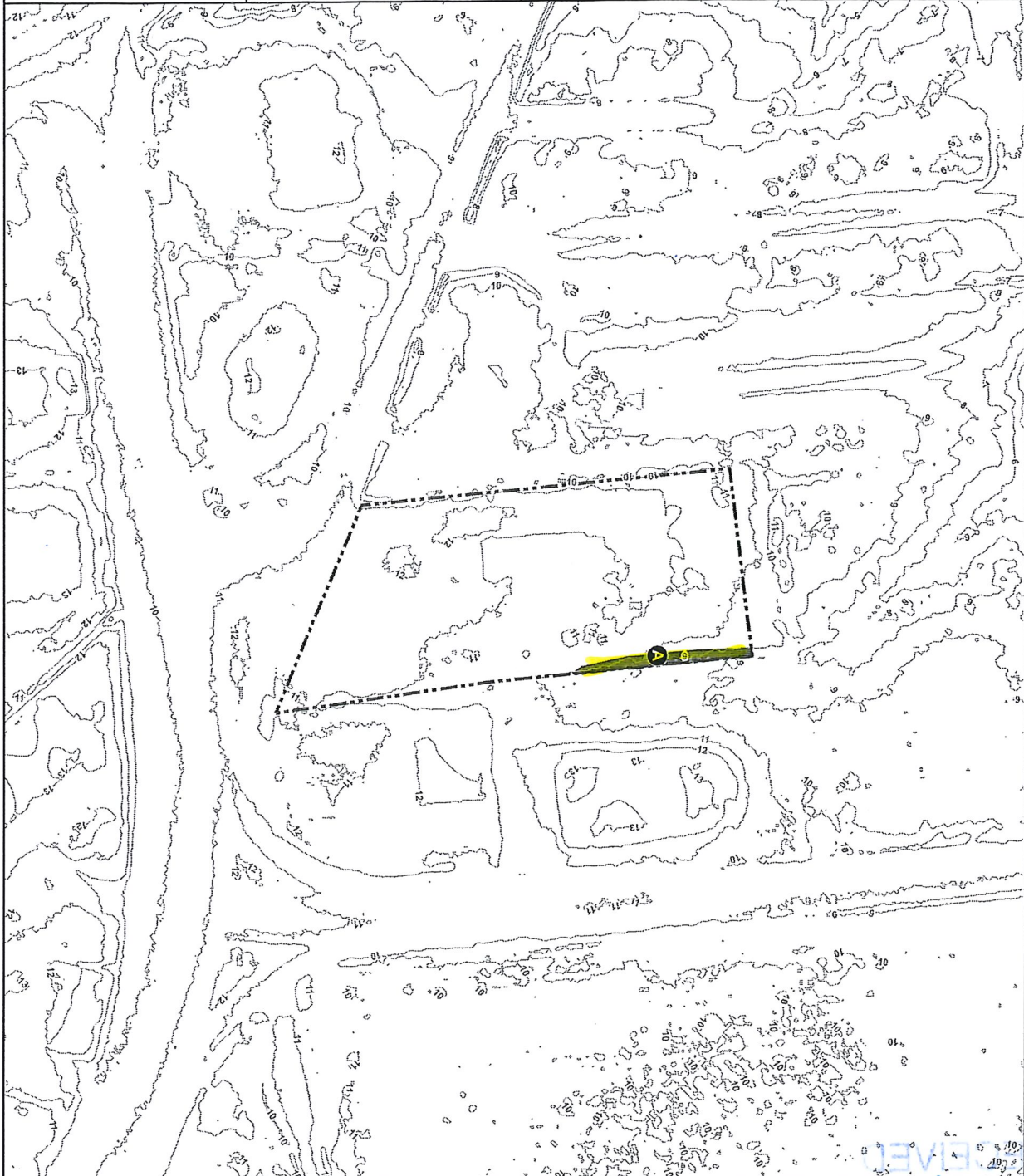
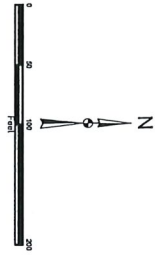
1. Vicinity Map
2. Preliminary Jurisdictional Waters of the U.S. Delineation Map

RECEIVED
MAY 3 10 2011
CDD 2TH FLOOR

Area	100'	200'	300'	400'	500'	600'	700'	800'	900'	1000'	1100'	1200'	1300'	1400'	1500'	1600'	1700'	1800'	1900'	2000'
100'	0	0	0	0	0	0	0	0	0	0	0	0	0	0	0	0	0	0	0	0
200'	0	0	0	0	0	0	0	0	0	0	0	0	0	0	0	0	0	0	0	0
300'	0	0	0	0	0	0	0	0	0	0	0	0	0	0	0	0	0	0	0	0
400'	0	0	0	0	0	0	0	0	0	0	0	0	0	0	0	0	0	0	0	0
500'	0	0	0	0	0	0	0	0	0	0	0	0	0	0	0	0	0	0	0	0
600'	0	0	0	0	0	0	0	0	0	0	0	0	0	0	0	0	0	0	0	0
700'	0	0	0	0	0	0	0	0	0	0	0	0	0	0	0	0	0	0	0	0
800'	0	0	0	0	0	0	0	0	0	0	0	0	0	0	0	0	0	0	0	0
900'	0	0	0	0	0	0	0	0	0	0	0	0	0	0	0	0	0	0	0	0
1000'	0	0	0	0	0	0	0	0	0	0	0	0	0	0	0	0	0	0	0	0
1100'	0	0	0	0	0	0	0	0	0	0	0	0	0	0	0	0	0	0	0	0
1200'	0	0	0	0	0	0	0	0	0	0	0	0	0	0	0	0	0	0	0	0
1300'	0	0	0	0	0	0	0	0	0	0	0	0	0	0	0	0	0	0	0	0
1400'	0	0	0	0	0	0	0	0	0	0	0	0	0	0	0	0	0	0	0	0
1500'	0	0	0	0	0	0	0	0	0	0	0	0	0	0	0	0	0	0	0	0
1600'	0	0	0	0	0	0	0	0	0	0	0	0	0	0	0	0	0	0	0	0
1700'	0	0	0	0	0	0	0	0	0	0	0	0	0	0	0	0	0	0	0	0
1800'	0	0	0	0	0	0	0	0	0	0	0	0	0	0	0	0	0	0	0	0
1900'	0	0	0	0	0	0	0	0	0	0	0	0	0	0	0	0	0	0	0	0
2000'	0	0	0	0	0	0	0	0	0	0	0	0	0	0	0	0	0	0	0	0

- Legend**
- Project Study Limits - 1.9 Acres
 - Wetland Identifier
 - 1' Topographic Contours
 - Palustrine Forested (PFO) Wetlands

- NOTES:**
1. WATERS OF THE U.S. WITHIN THE PROJECT STUDY LIMITS HAVE BEEN GRS LOCATED BY TIMMONS GROUP.
 2. WATERS OF THE U.S. HAVE NOT BEEN CONFINED BY THE PROJECT STUDY LIMITS.
 3. PROJECT STUDY LIMITS ARE APPROXIMATE.
 4. TOPOGRAPHY BASED ON USGS LIDAR DATA.
 5. COWARDIN STREAM CLASSIFICATIONS ARE BASED SOLELY ON FIELD OBSERVATIONS; NO FORMAL STREAM ASSESSMENT WETFOCALYST HAS CONDUCTED TO DETERMINE THESE COWARDIN CLASSIFICATIONS.



TIMMONS GROUP

I CAN CHILD LEARNING CENTER
CITY OF HAMPTON, VIRGINIA

FIGURE 2: PRELIMINARY WETLAND AND RESOURCE PROTECTION AREA ASSESSMENT MAP

THIS DRAWING PREPARED AT THE CORPORATE OFFICE:
1001 Boulevard Parkway, Suite 300 | Richmond, VA 23225
TEL 804.200.6500 FAX 804.659.1648 www.timmons.com

Site Development	Residential	Infrastructure	Technology	Environmental
REVISION DESCRIPTION				
DATE				
05/16/2017				
DESIGNED BY				
L. MAJOR				
CHECKED BY				
E. WINTS				
SCALE				
1" = 100'				

These plans and associated documents are the exclusive property of TIMMONS GROUP and may not be reproduced in whole or in part and shall not be used for any purpose whatsoever, inclusive, but not limited to construction, bidding, and/or construction staking without the express written consent of TIMMONS GROUP.