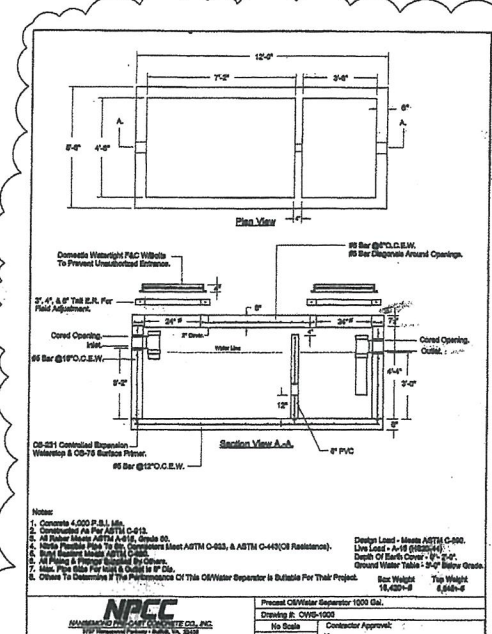


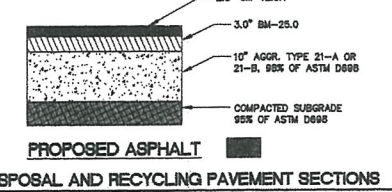
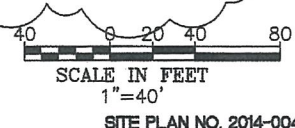
SANITARY STRUCTURE & PIPE SCHEDULE

| | |
|------------------------------------------|---------------------------------------------------------|
| ① DROP INLET RM = 14.00 INV = 8.20 | ⑤ GRINDER PUMP STATION TOP = 14.12 INV IN = 12.37 |
| ② TO ③ 170\"/> | |



REVISION 1 APPROVAL
 APPROVED BY DIRECTOR OF PUBLIC WORKS
 APPROVED BY COMMUNITY DEVELOPMENT DEPARTMENT

A.J. Payne 12/5/16
Greg K. Hest 12/05/2016



NOTES:
 THIS PLAN DOES NOT GUARANTEE THE LOCATION OF EXISTING UNDERGROUND UTILITIES. CONTRACTOR TO DETERMINE ACTUAL LOCATION AND DEPTH OF ALL UTILITIES PRIOR TO MOBILIZATION. IF CONFLICTS EXIST, NOTIFY ENGINEER.
 BEFORE DIGGING CONTACT "MISS UTILITY" AT 811

HORTON & DODD, P.C.
 Surveyors, Engineers, Planners
 PHONE: (757) 467-4535 FAX: (757) 487-9768
 300 George Washington Highway North Chesapeake, Virginia 23323
 EMAIL: c.miller@hdcpc.net

| DESIGNED | DATE | REVISIONS | DATE |
|----------|------|-----------|------|
| | | | |
| | | | |
| | | | |
| | | | |
| | | | |

**BUILDING & PARKING LOT ADDITION
 BAY DISPOSAL AND RECYCLING
 310 E STREET
 HAMPTON, VIRGINIA**

**REVISION 1
 OIL-WATER SEPARATOR
 GRINDER PUMP STATION**

FILE NO. 22670
 DATE 4/16/15
 SCALE 1"=40'
 SHEET C-3.1
 SITE PLAN NO. 2014-004