



HAMPTON ROADS EXPRESS LANES NETWORK & THE HRBT EXPANSION PROJECT UPDATES

Hampton City Council Work Session

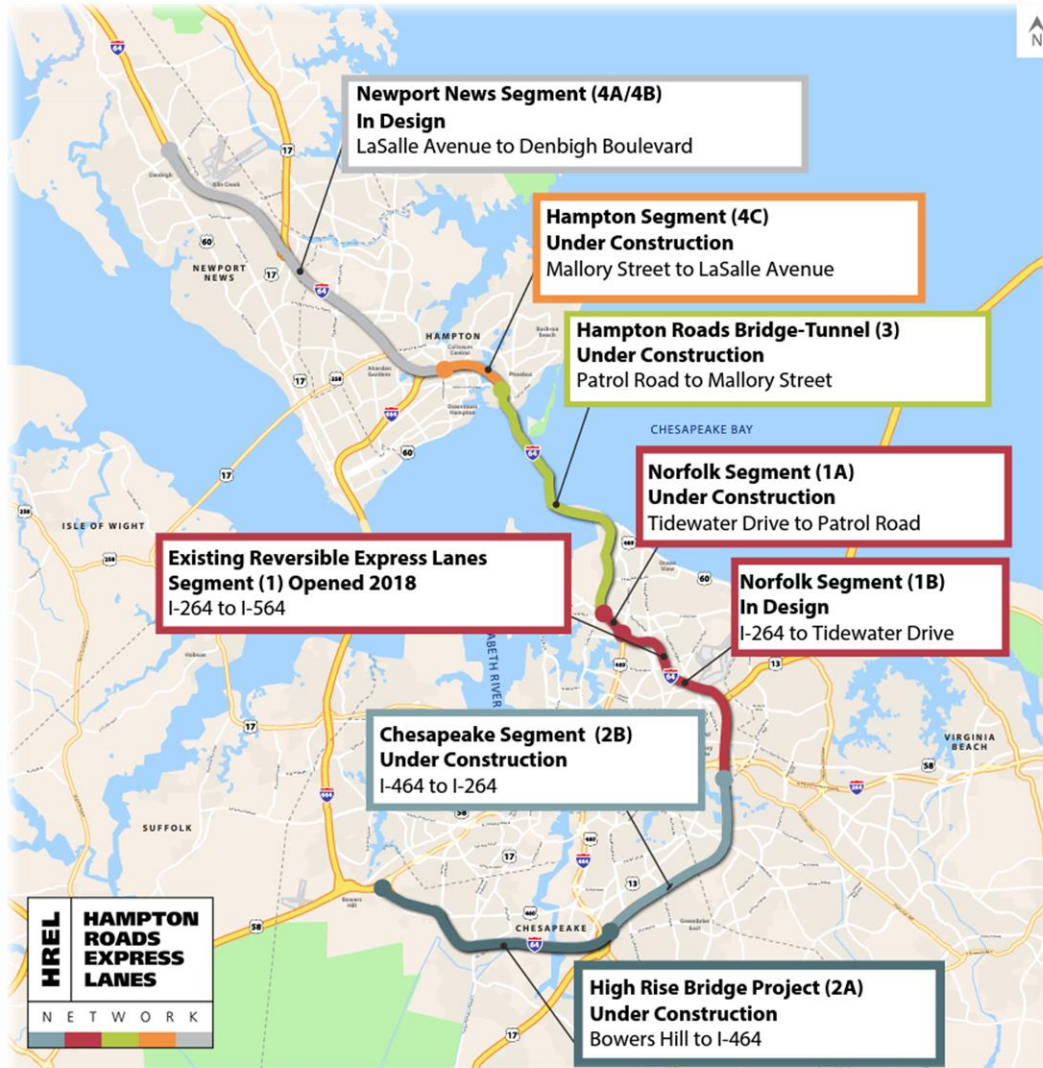
| Christopher Hall, P.E.

August 9, 2023

AGENDA

- **I-64 Hampton Roads Express Lanes**
- **Hampton Roads Bridge-Tunnel Expansion Project**
- **Transportation Management Plan**

Hampton Roads Express Lanes Network (HREL)



- **46-Mile Continuous Network**
- **I-64 from Denbigh Boulevard to I-664 (Bowers Hill)**
- **High Occupancy Toll (HOT-2)**
- **Dynamic Tolling System**

Hampton Roads Express Lanes Simulation



HREL Newport News Segment Overview

Location

•13.5 miles, I-64 from west of Denbigh Boulevard in Newport News to east of LaSalle Avenue in Hampton

Scope

•Express Lanes Conversion:

- Existing HOV lane, from west of Jefferson Avenue to I-664
- General purpose lane, from I-664 to LaSalle Avenue

•Bridge Replacement

- I-64 east bridge over LaSalle Avenue

Estimated Schedule

- Advertisement for Construction: Fall 2023
- Notice to Proceed: Early 2024



HREL Hampton Segment Overview

Location

• 2.4 miles, from LaSalle Avenue (exit 265) to west of Mallory Street (exit 268)

Scope

• Express Lanes Conversion:

- 3 Existing General Purpose Lanes into 2 Express Lanes and 2 General Purpose Lanes in each direction

• Bridge Widening, Rehabilitation/Replacement

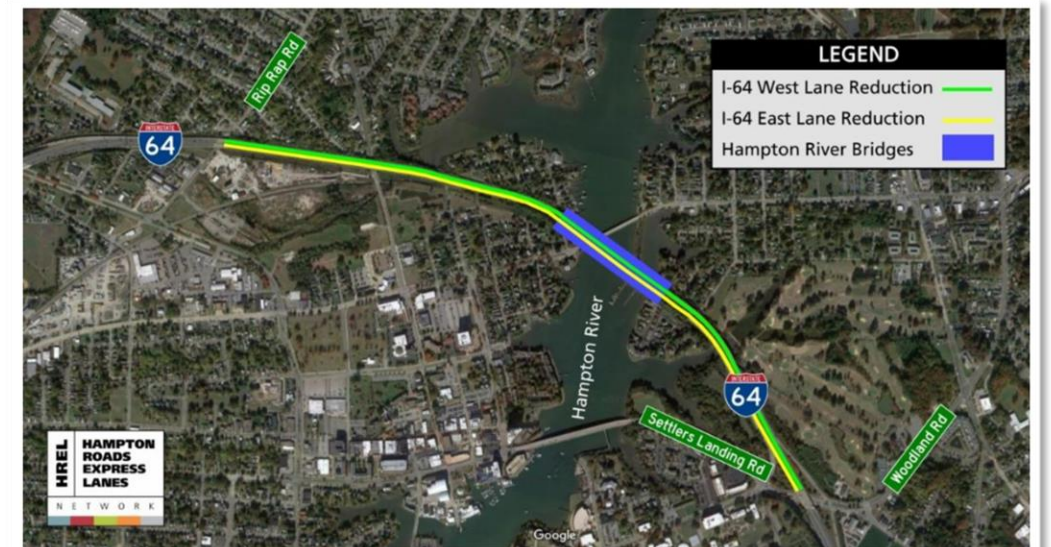
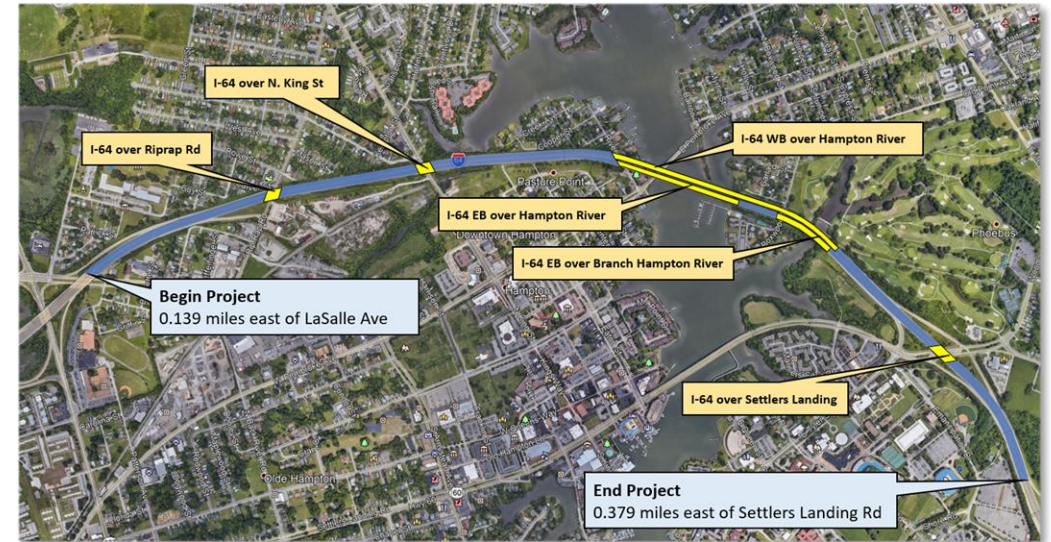
- I-64 Hampton River bridges, King Street bridges, Settlers Landing Road bridges, Rip Rap Road bridge

Status

• Notice to Proceed Issued: August 2022

• Construction Updates:

- Shoulder strengthening underway
- Long-term traffic shifts, lane reductions began in July 2023



HREL Hampton Segment Traffic Impacts

Current Impacts

•Long-term Lane Closures, Reductions:

- ⑩ I-64 East, from Rip Rap Road to Settlers Landing
- ⑩ I-64 West, from HRBT to Rip Rap Road

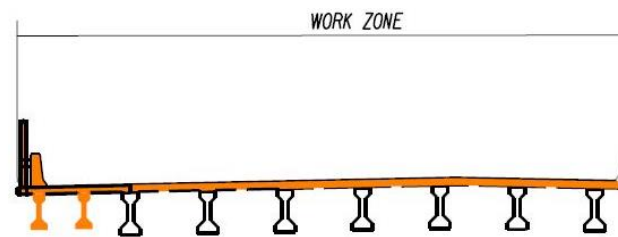
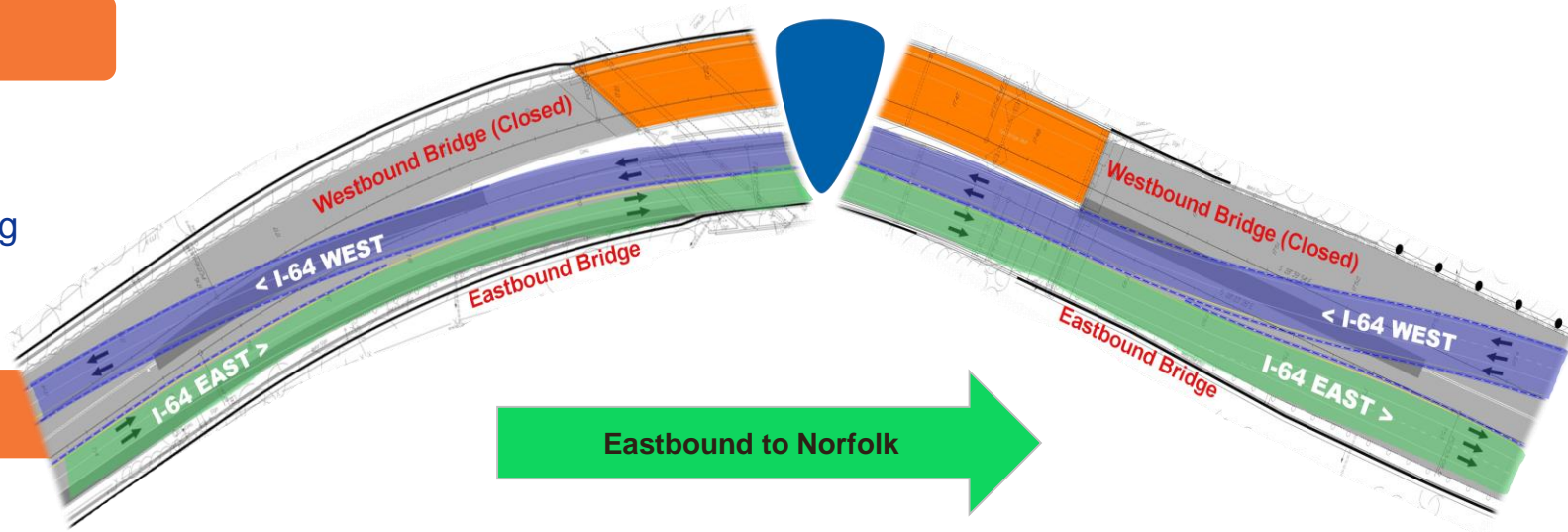
Upcoming Impacts

•Long-term Closures Continued

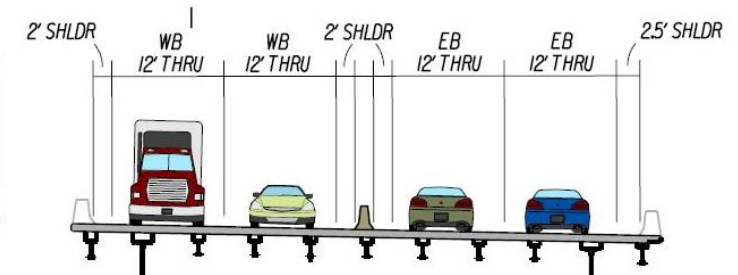
- ⑩ Estimated to Remain in Place Through 2026

Bridge Widening, Traffic Shifts

- ⑩ Next Shift Estimated to Begin in August:
 - ⑩ I-64 West Traffic to Shift onto the Eastbound Hampton River Bridge
 - ⑩ I-64 East Traffic to Remain on Eastbound Hampton River Bridge



Westbound Hampton River Bridge
(Closed to Traffic)



Eastbound Hampton River Bridge
(I-64 West & East Traffic)

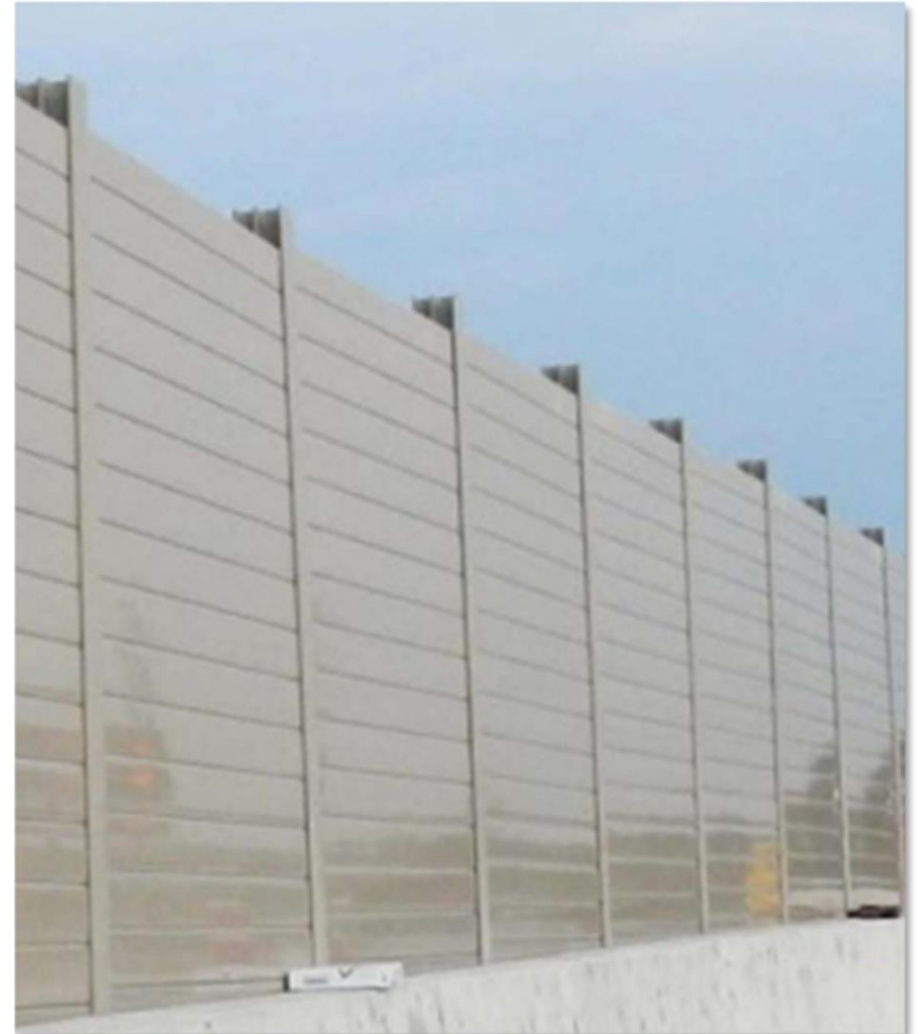
HREL Hampton Noise Barriers



Ground-Mounted Noise Barriers with Crab Design



Transparent Structure-Mounted Noise Barriers (Hampton River Bridges)



Structure-Mounted Noise Barriers (King Street Bridge)

Hampton Roads Express Lanes Operations



- **24 Hours, 7 Days per Week**
 - Ultimately, all HREL segments to operate 24/7 as Express Lanes
 - 1st Segments Estimated to Begin 24/7 Operations – Late 2023
 - Existing Norfolk Reversible Express Lanes
 - New Chesapeake Segment (between Bowers Hill interchange and I-264)
 - Real-Time Dynamic Tolling
 - Price Fluctuations to Improve Traffic Flow in Express Lanes *and* the General Purpose Lanes
- **Solo Driver, Multiple Choices:**
 - Choose to Pay Variable Toll to Utilize Express Lanes
 - Use Free General Purpose Lanes
 - Carpool with others; **HOV-2 vehicles still travel toll-free with E-ZPass Flex switched to “HOV-ON”**

HRBT Expansion Project



HRBT Expansion Concept Video



Mallory Street Bridge Work



- Mechanically Stabilized Earth (MSE) Work
 - Beneath Mallory Street Bridge
- Overnight single lane closures on I-64 east and west for the following work
 - Utility relocation and/or installation
 - Drainage work
 - Roadway widening
 - Median barrier removal and relocation



What's Coming in the Future

- Major traffic shift onto permanent structure I-64 east from Hampton
- Overnight, all stops (up to 15 minutes each) on I-64 for utility and overhead sign installation



Tunneling Update

- Mining began in April 2023
- 1,040 feet mined
- 151 rings in place
- 1-year evolution
- Segment construction 70% complete
- Expected breakthrough in spring 2024



Transportation Management Plan (TMP)

The Transportation Management Plan (TMP) has 12 priority strategies aimed to:

PREPARE

- Utilize locality experts to build consensus and have vested interest in TMP success
- Implement spot improvements on local roads to support additional traffic

INFORM

- Focus on major employer networks to pass along information about the project
- Work collaboratively with Waze and Google Maps to understand traffic conditions

MITIGATE

- Ensure services are in place to respond to incidents and crashes timely and effectively
- Support drivers to make early choices about major bridge crossings

Improving Traffic...Together

- **Drivers Invited to Be a Part of the Traffic Solution**
- **Safe Driving Practices = Less Traffic Congestion**

Traffic-Impacting Travel Trends:

Safety Service Patrol Monthly Averages:

- **3,000** Traffic Control Assists
- **400** Tire Changes
- **300** Debris Pickups
- **265** Refueling Assists

Interstate Impacts (April-June 2023)

- **9,175** Disabled Vehicles & Crashes
- **15 Min.:** Avg. Scene Clearance
- **2,038** Lane-Impacting Incidents
- **58%** of Lane-Impacting Incidents Cleared <30 Minutes
- **22 Min.:** Avg. Clearance for Lane-Impacting Incidents

