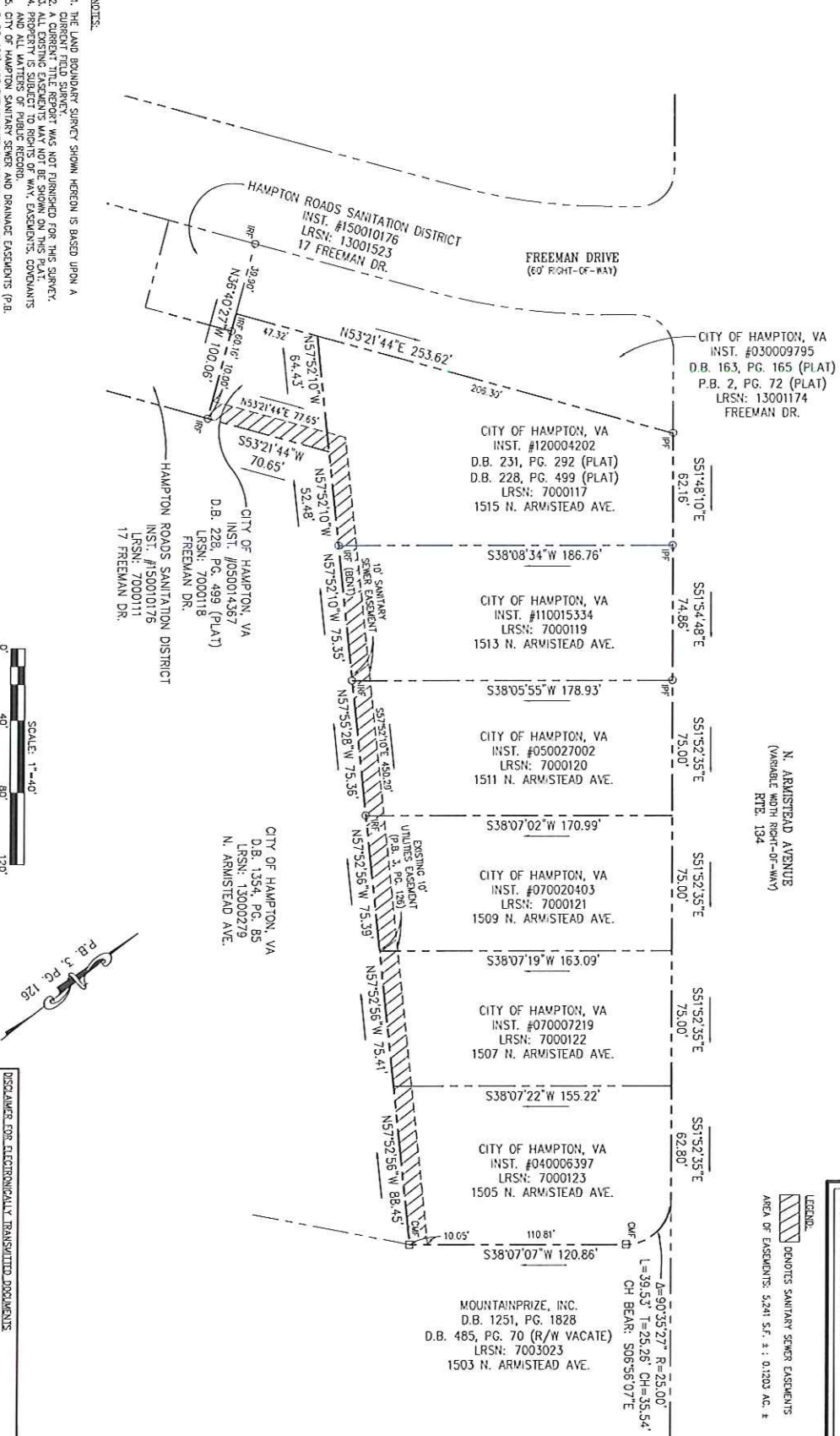




Plat Showing  
Sanitary Sewer Basements  
Located at 1505, 1507, 1509, 1511, 1513, 1515  
N. Armistead Avenue & Freeman Drive,  
Hampton, VA  
Conveyed to Hampton Roads Sanitation  
District  
From The City of Hampton, VA  
CITY SURVEYOR - W.B. CROCKETT, L.S.  
CITY OF HAMPTON - PUBLIC WORKS ENGINEERING  
22 LINCOLN ST., HAMPTON VA 23669

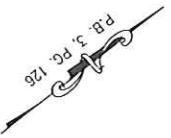
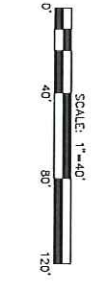
SURVEY BY: W.B. CROCKETT, L.S.  
CALC. BY: W.B. CROCKETT, L.S.  
DRAWN BY: R.L. EDWARDS  
CHECKED BY: W.B. CROCKETT, L.S.  
DATE: 21-Apr-2006  
Scale  
Sheet 1 of 1

LEGEND  
DENOTES SANITARY SEWER EASEMENTS  
AREA OF EASEMENTS: 5,241 S.F. ± : 0.1203 AC. ±



- NOTES:  
1. THE LAND BOUNDARY SURVEY SHOWN HEREON IS BASED UPON A CURRENT FIELD SURVEY.  
2. A CURRENT TITLE REPORT WAS NOT FURNISHED FOR THIS SURVEY.  
3. ALL EXISTING EASEMENTS MAY NOT BE SHOWN ON THIS PLAT.  
4. THIS SURVEY IS BASED UPON THE CITY OF HAMPTON RECORDS AND ALL MATTERS OF PUBLIC RECORD.  
5. CITY OF HAMPTON SANITARY SEWER AND DRAINAGE EASEMENTS (P.B. 3, PG. 126) ARE EXTINGUISHED BY DOCTRINE OF MERGER.

ADDITIONAL REFERENCES:  
P.B. 2, PG. 72  
P.B. 3, PG. 109  
P.B. 3, PG. 126



DISCLAIMER FOR ELECTRONICALLY TRANSMITTED DOCUMENTS  
THE ORIGINAL SIGNED VERSION OF THIS PLAT IS ON FILE AT THE CITY OF HAMPTON PUBLIC WORKS DEPARTMENT, 22 LINCOLN STREET, HAMPTON, VIRGINIA. NEITHER THE CITY OF HAMPTON NOR THE LICENSED SURVEYOR WARRANTS THE ACCURACY OF THE INFORMATION OR DATA SHOWN ON THIS PLAT OR ANY SUBSEQUENT CHANGES TO THE INFORMATION OR DATA SHOWN ON THE ORIGINAL SIGNED VERSION WHICH ARE NOT MADE BY THE LICENSED LAND SURVEYOR OR THOSE WORKING UNDER HIS DIRECT CONTROL AND PERSONAL SUPERVISION.

\\hampton\survey\projects\2006\1505\1507\1509\1511\1513\1515\1515\1505\1507\1509\1511\1513\1515.dwg