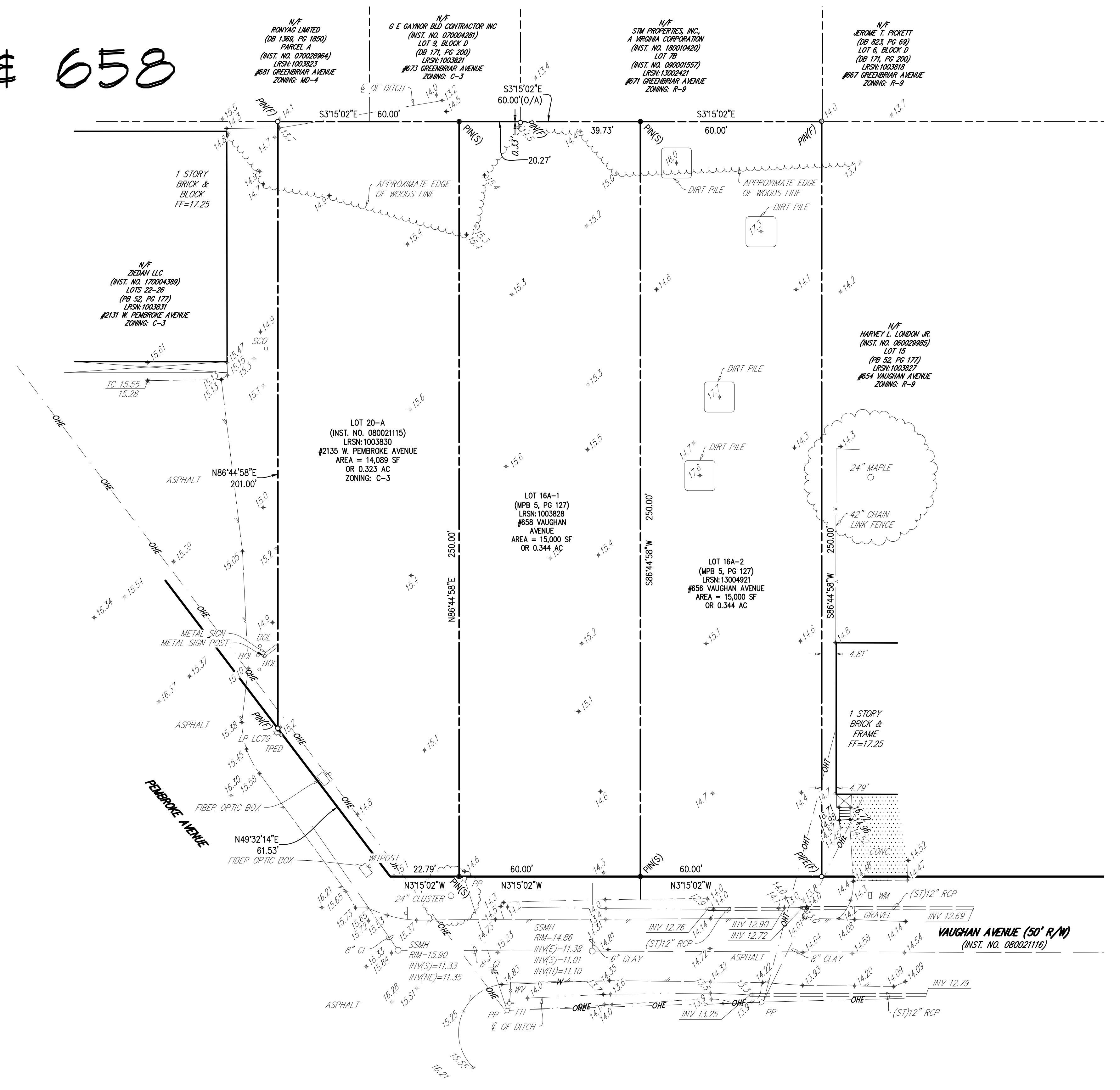


BOUNDARY AND TOPOGRAPHIC SURVEY OF

2135 W. PEMBROKE AVE. & 658

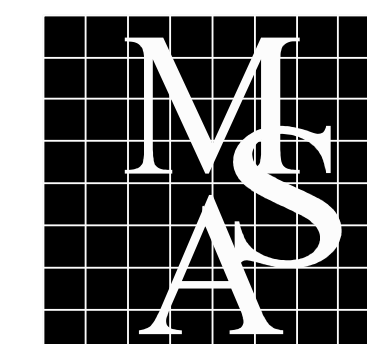
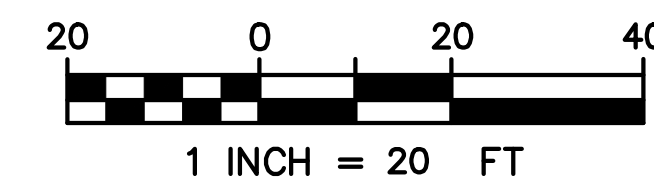
VAUGHAN AVE.

HAMPTON, VIRGINIA



DATE: 12/11/2019

THIS DRAWING IS CONCEPTUAL AND HAS BEEN PREPARED WITHOUT BENEFIT OF A SITE SURVEY, THEREFORE, PROPERTY LINES, WETLAND BOUNDARIES, AND OTHER SITE SPECIFIC DATA ARE APPROXIMATE. CONCEPT DRAWINGS ARE GENERAL IN NATURE AND ARE INTENDED ONLY TO ILLUSTRATE THE DEVELOPMENT POTENTIAL FOR A PROPERTY; THEY SHOULD NOT BE RELIED UPON AS THE SOLE BASIS FOR ANY FINANCIAL OR LEGALLY BINDING TRANSACTION.



MSA, P.C.
 Environmental Sciences • Planning • Surveying
 Civil & Environmental Engineering • Landscape Architecture
 5032 Rouse Drive, Suite 100
 Virginia Beach, VA 23462-3764
 757-490-9264 | www.msaonline.com
 MSA PROJ. #15188DH