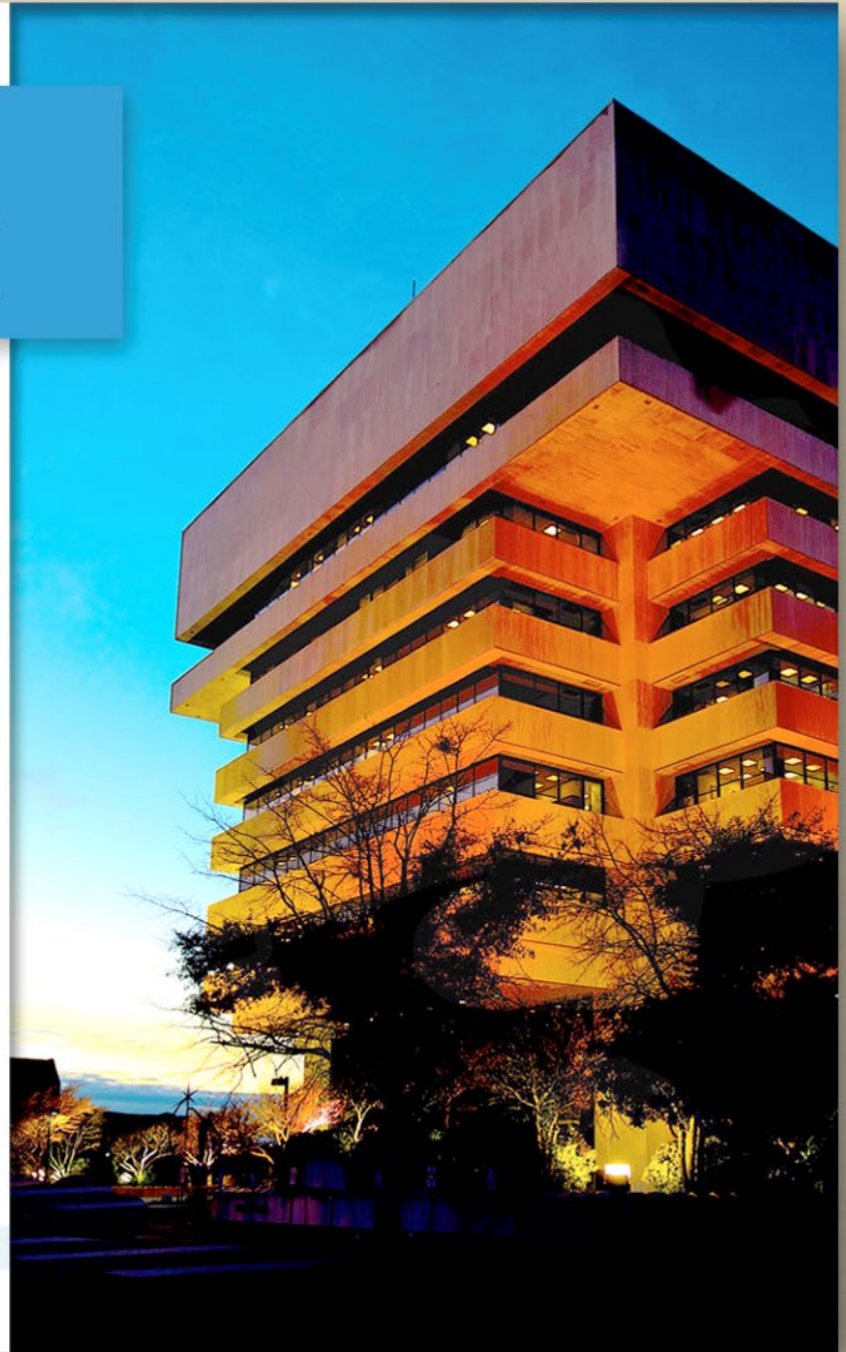


HAMPTON VA

20-0008
Use Permit

5200 Mercury Blvd.

City Council
January 8, 2020



Application

Use Permit for Self-Storage 2



York County

City of Poquoson



James River

Chesapeake Bay

Hampton Roads Harbor

York County

N. A. S. A.

Langley Air Force Base

Hampton Roads Center

Coliseum Central

Downtown Hampton

Farmington

Willow Oaks

Fox Hill

Buckroe Beach

Newmarket North

Briarfield

Power Plant

Phoebus

Fort Monroe

Wythe

Downtown Hampton

Hampton Univ.

Roberts Trace

Newmarket

Newmarket Creek

Town Park

Crowne Pointe

Forrest Park

Bethel Park

Briarfield

Newmarket Creek

Town Park

Crowne Pointe

Roberts Trace

Newmarket

Newmarket Creek

Town Park

Crowne Pointe

Roberts Trace

Newmarket

Newmarket Creek

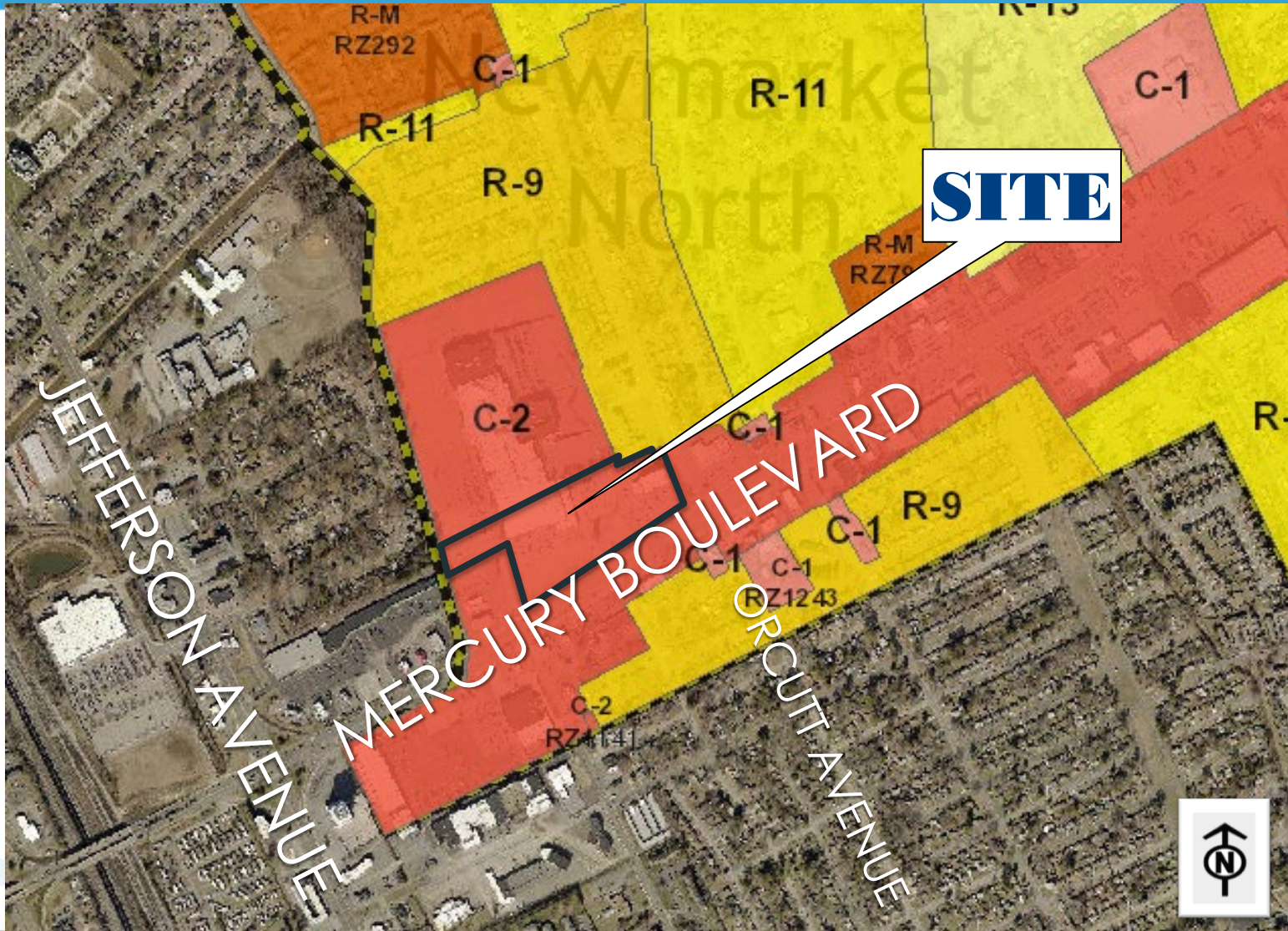
Town Park

Crowne Pointe

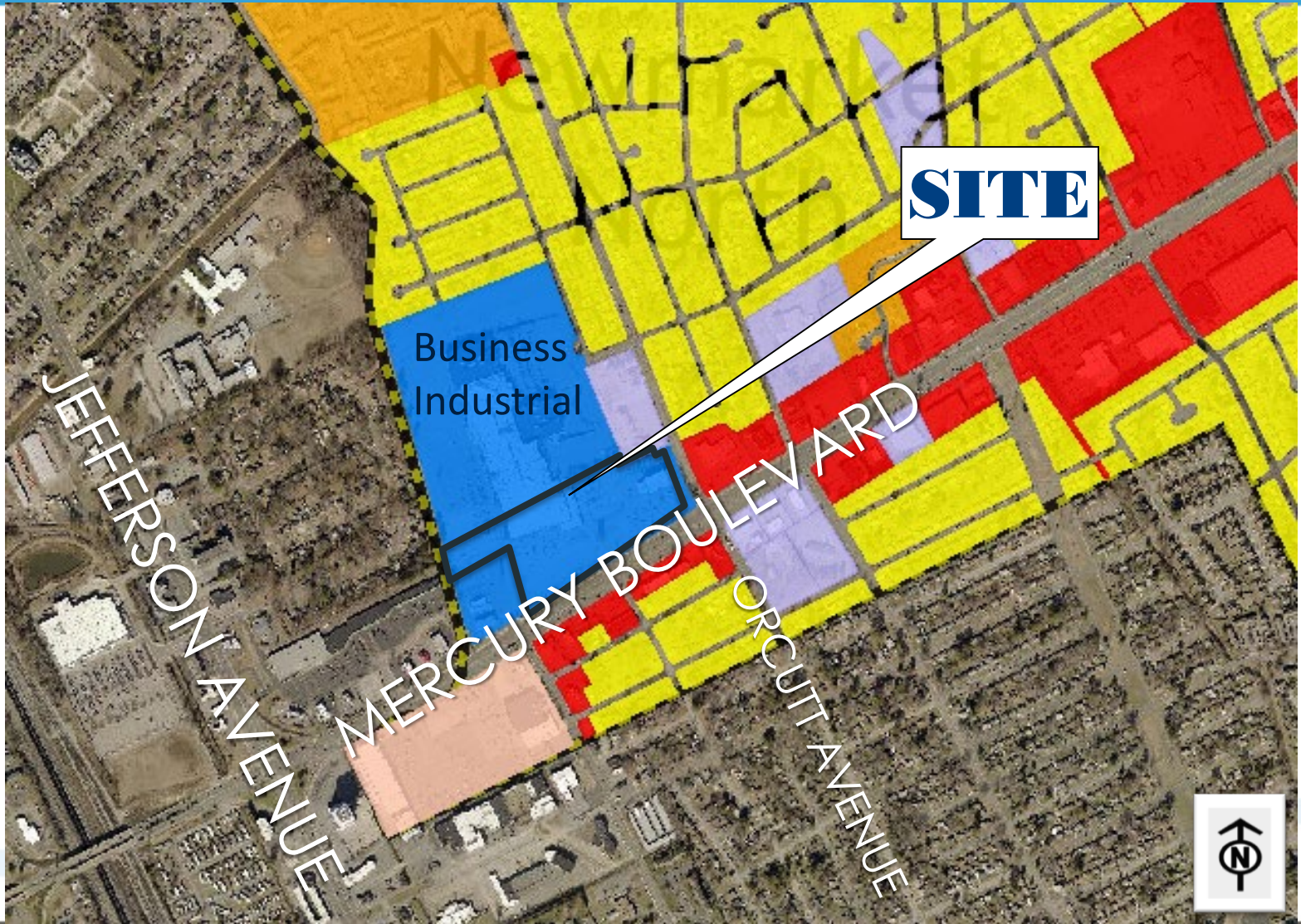
Site Location



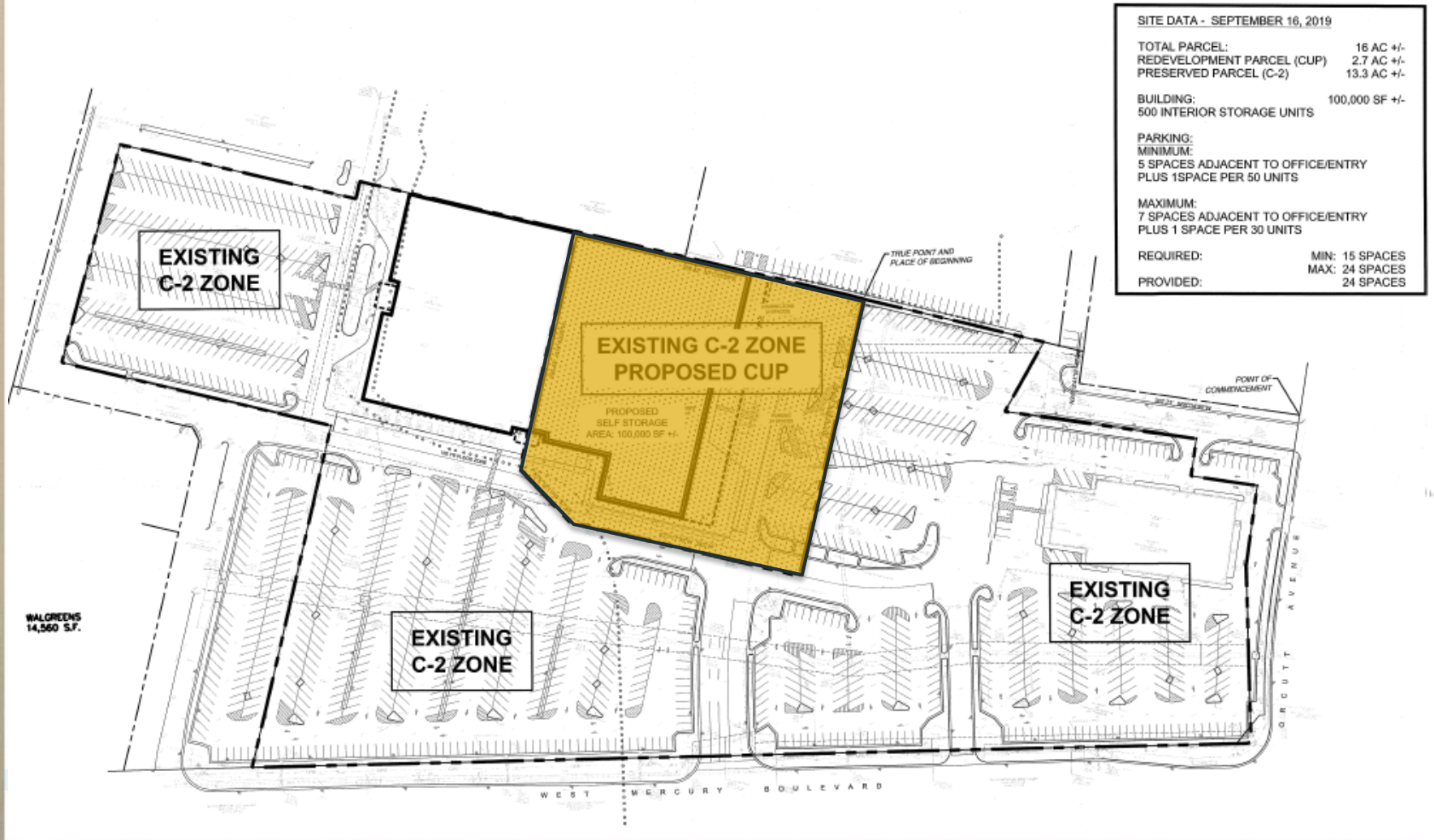
Zoning



Future Land Use Plan



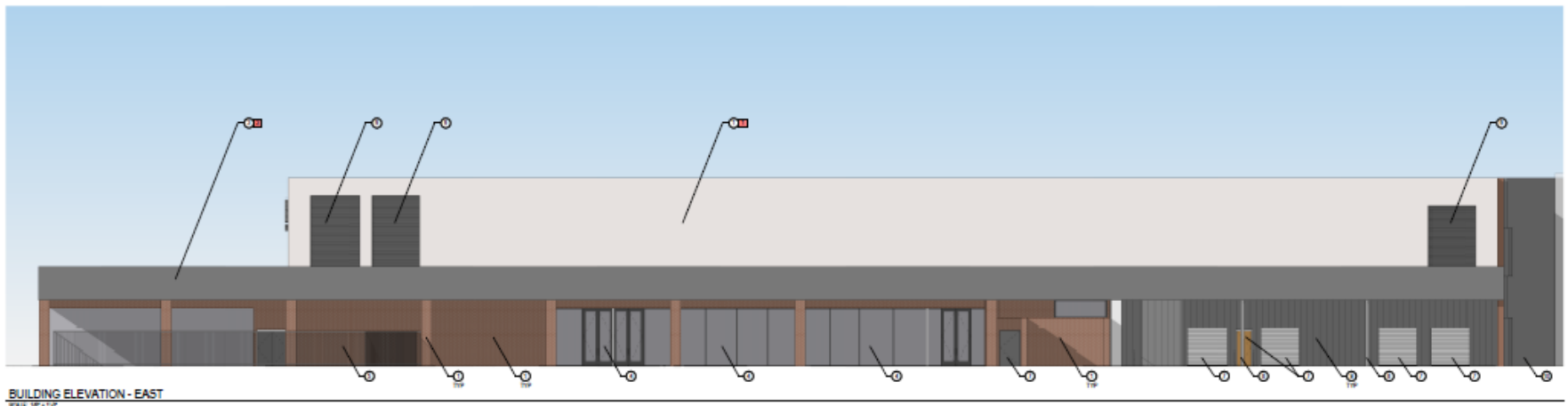
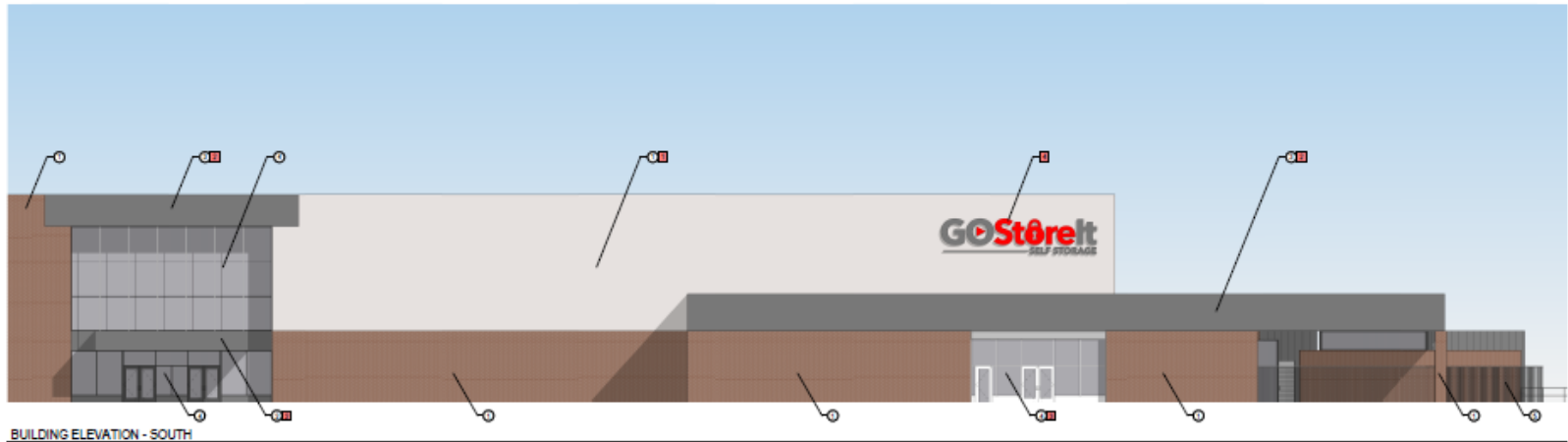
Concept Site Plan



Floor Plan



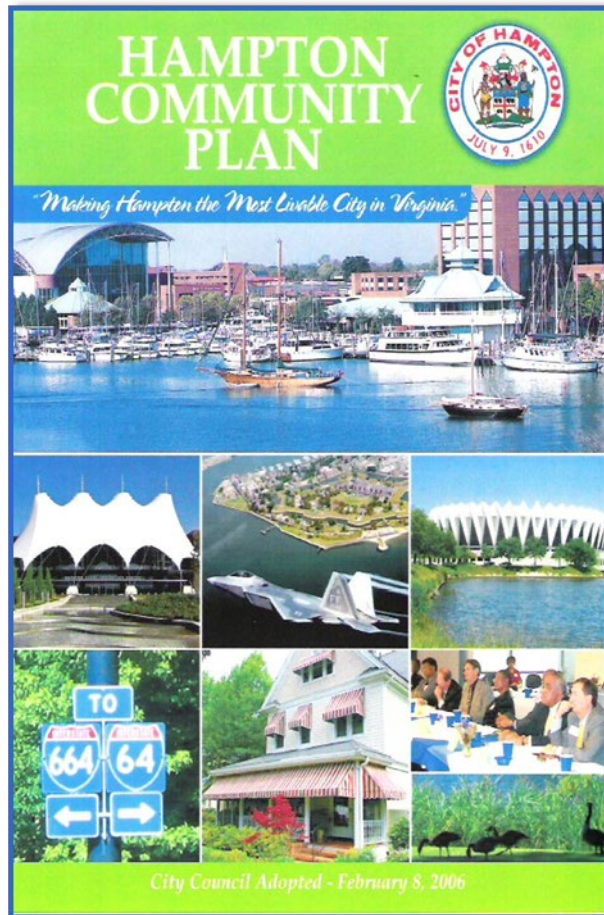
Go Store It Elevations



Go Store It Elevations



Public Policy: Hampton Community Plan



Hampton Community Plan (2006, as amended)

Evaluate from regional, city, & neighborhood perspective

High quality site planning & efficient use of land

Mix of land uses

Strengthen older business/industrial areas

Support new & expanded businesses

Self-Storage Conditions

- Issuance of Permit
- Mix of Uses
- Elevations
- Outdoor Storage
- Surveillance
- Compliance with applicable laws



Recommendation

Planning Commission &
Staff Recommend
Approval of 20-0008
with 8 conditions