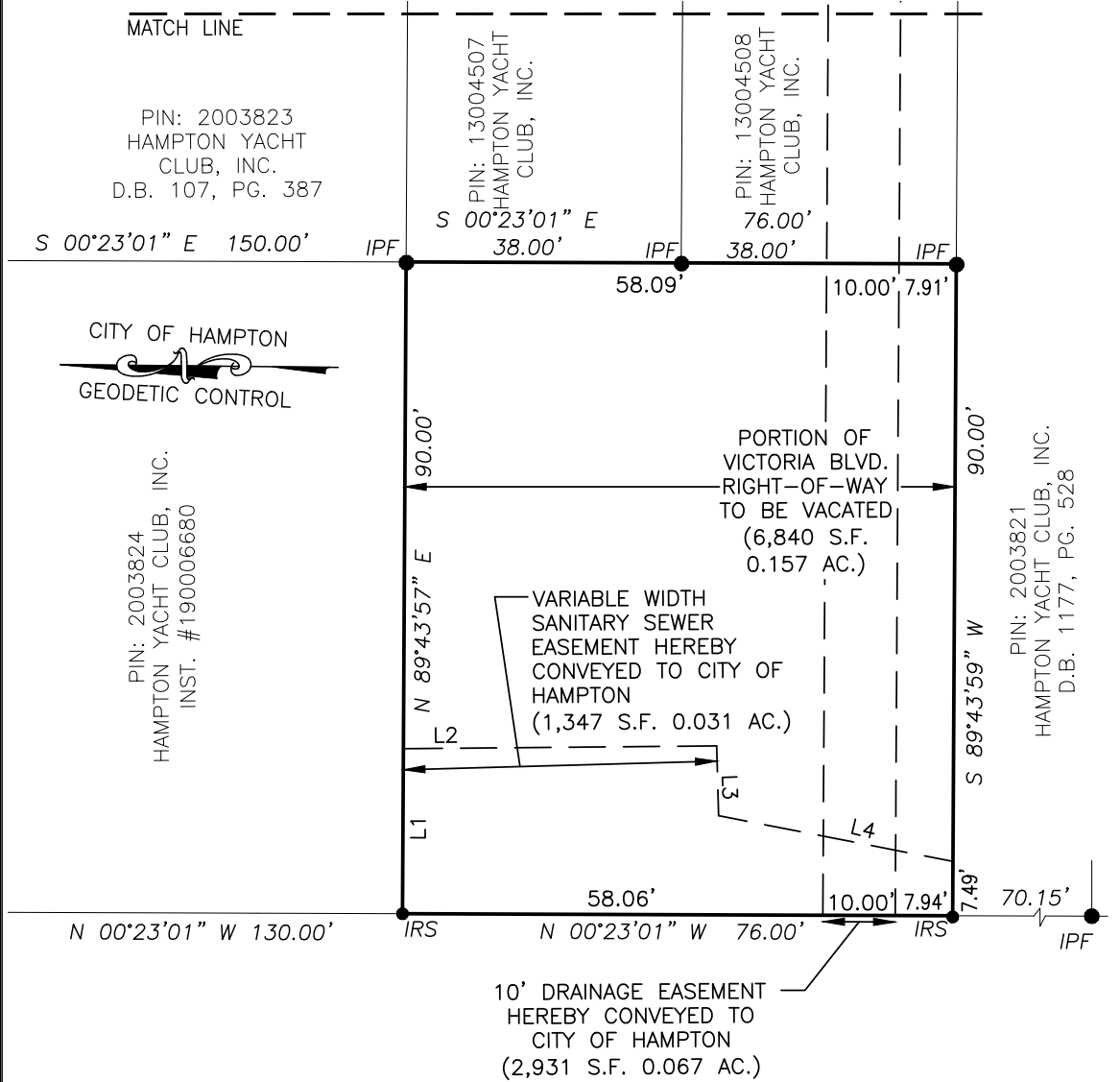


NOTES:

1. THIS PLAT IS BASED ON A FIELD SURVEY COMPLETED JANUARY, 2015.
2. THIS PLAT WAS PRODUCED WITHOUT THE BENEFIT OF A TITLE REPORT AND MAY NOT REFLECT ALL ENCUMBRANCES, EASEMENTS AND SETBACKS THAT AFFECT THE SUBJECT PROPERTY.



LEGEND

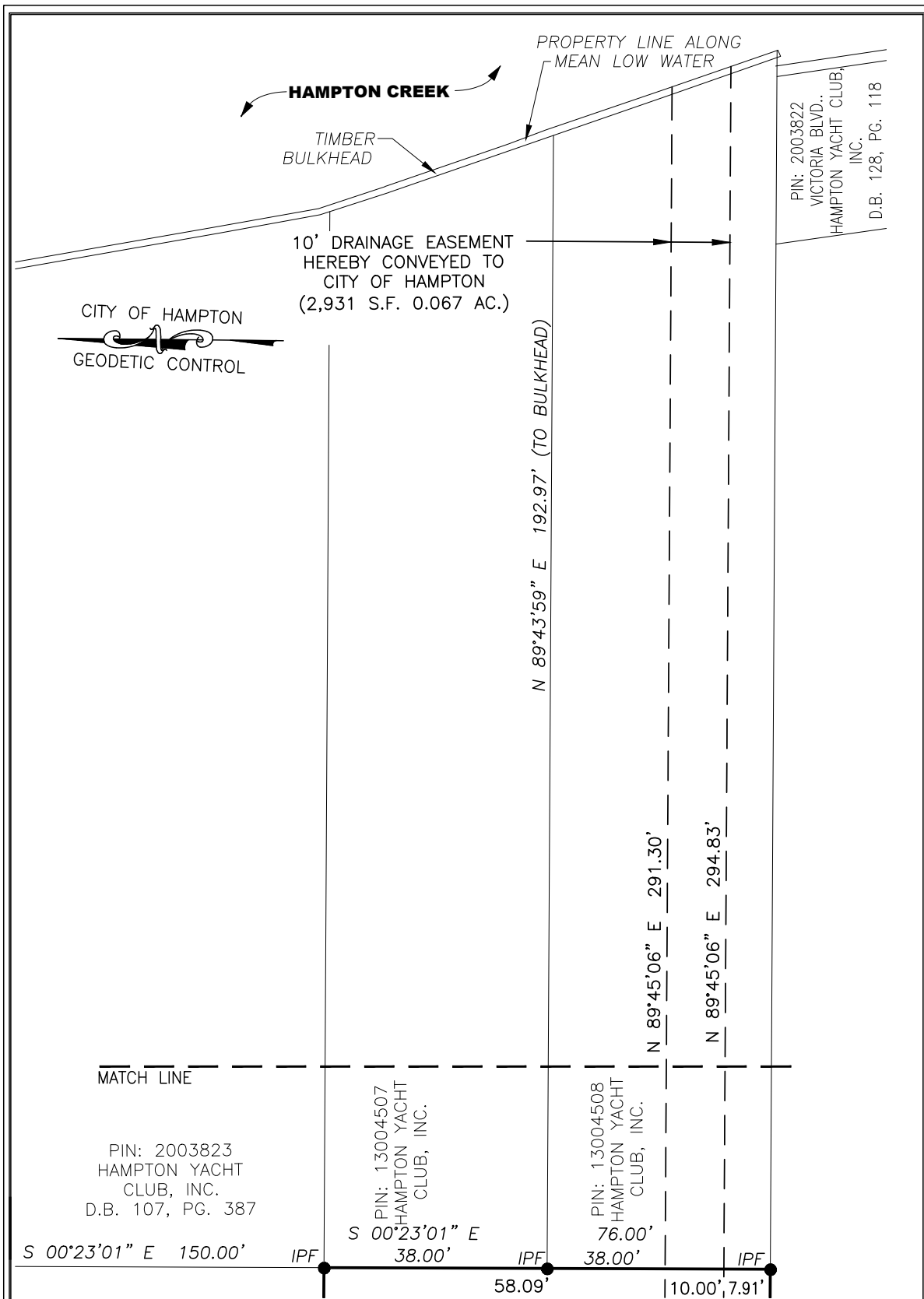
IPF=IRON PIPE FOUND  
IRS=IRON ROD OR NAIL TO BE SET

**BRIDGE STREET**  
(60' R/W)

**VICTORIA BLVD.**

LINE	BEARING	DISTANCE
L1	S 89°43'57" W	22.78'
L2	N 01°06'16" W	43.27'
L3	N 87°49'52" E	9.64'
L4	N 10°27'13" E	32.99'

	SHEET 1 OF 2	RIGHT-OF-WAY VACATION <b>A PORTION OF VICTORIA BOULEVARD</b> HAMPTON VIRGINIA
	DATE: 03/17/23 SCALE: 1"=20' JOB# 14-267 CAD File EXHIBIT.dwg	<b>LandTech Resources, Inc.</b> Engineering & Surveying Consultants 205 Bulifants Blvd., Suite E, Williamsburg, Virginia 23188 Telephone: 757-565-1677 Fax: 757-565-0782 Web: landtechresources.com



SHEET 2 OF 2

RIGHT-OF-WAY VACATION  
**A PORTION OF VICTORIA BOULEVARD**  
HAMPTON VIRGINIA

DATE: 03/17/23  
SCALE: 1"=20'  
JOB# 14-267  
CAD File  
EXHIBIT.dwg

**LandTech Resources, Inc.**  
Engineering & Surveying Consultants  
205 Bulifants Blvd., Suite E, Williamsburg, Virginia 23188  
Telephone: 757-565-1677 Fax: 757-565-0782  
Web: landtechresources.com