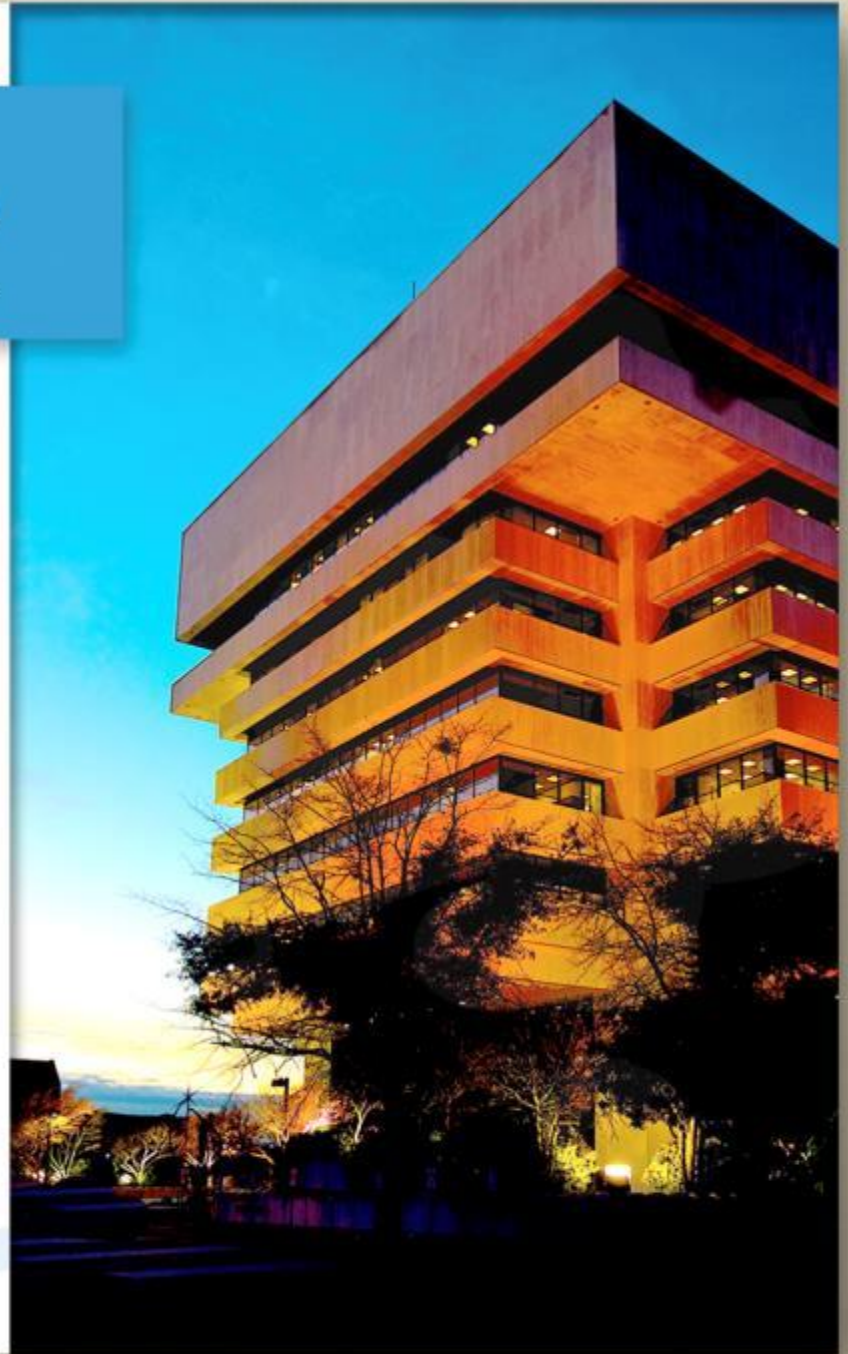
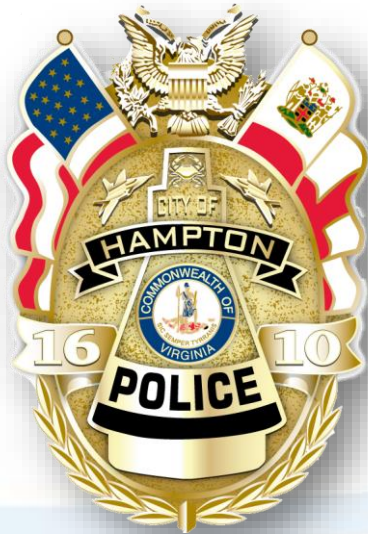


HAMPTON VA

***Hampton Police Division
Traffic Congestion:
Settlers Landing Rd.
Phoebus Area***



Settlers Landing Road Phase I



Enforcement Actions

- Routine patrols of district officers.
- Proactive measures through directed patrols and special operations.
- This will be accomplished with the use of marked, unmarked patrol units and marked police motors.
- Authorized two overtime officers during peak traffic hours

Use of Special equipment:



Settlers Landing Road

Traffic Charges

- September 2019
 - 30 Summonses issued for 'Failure to obey a traffic signal'
 - 2 Summonses issued for 'Unsafe lane change'
 - 6 Summonses issues for other violations (exp. registration, exp. inspection, obstruction of justice)

Accident Reports

- January 1, 2019 – October 23, 2019
 - Time Frame: 1500 -1800 (15 Crashes)
 - 6 Unsafe lane changes
 - 7 Following too close
 - 2 Angled
 - Time Frame: 0600-0900 (3 Crashes)
 - 1 Unsafe lane change
 - 2 Following too close

Phoebus

Traffic Charges

- September 2019
 - 94 Summonses issued for 'Failure to obey a traffic signal'
 - 4 Summonses issued for 'Driving suspended'
- October 2019
 - 78 Summonses issued for 'Failure to obey a traffic signal'
 - 3 Summonses issued for 'Driving suspended'

Accident Reports

- Mallory Street
 - January 1, 2019 – October 23, 2019
 - Time Frame: 1500 -1800 (5 Crashes)
 - 1 Unsafe lane changes
 - 4 Angled
 - Time Frame: 0600-0900 (1 Crashes)
 - 1 Unsafe lane change

Recommendations from Traffic Unit

1. Reduce the speed limit to 25 mph.
2. Paint a solid white line where the pylons are placed.
3. Additional Road markings should be placed (i.e. I-64 East, Hampton University)
4. Add raised medians where pylons are located (I-64 side of bridge)
5. NO U-Turn signs on Harvey Way at Emancipation Dr.
6. Close Mallory ramp to I-64 during peak hours

Intersection Review



Suggested

Raised Median



Speed Limit 25MPH (East/West)

Woodland Rd

To I-64 East

To HU

Raised Median
With Pylons

Solid Lane
Markings w/
Pylons

Signage at Settlers / Eaton
I-64 East or West
(Road / Above Grade)

No U-Turn Sign

To I-64 East

Raised Median
With Pylons

I-64 On Ramp

Red Light Cameras Phase II



Red Light Cameras Phase II

Pros

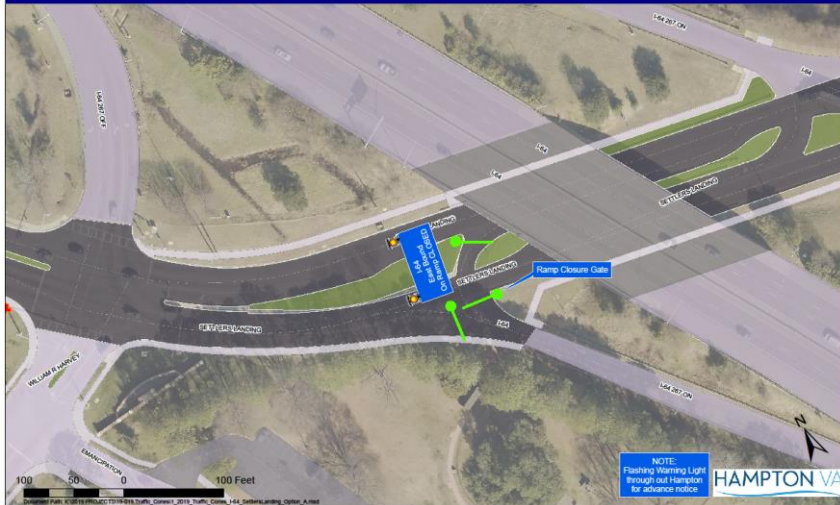
- Provides enforcement without impeding traffic.
- Deters vehicles from blocking the intersection.
- Could be an additional revenue source for the city.

Cons

- Possible Initial financial investment
 - (\$100k+ / intersection)
- Requires outsourcing – reduced revenue
- May not meet threshold for outsourcing
- Requires additional full time police officer position to view approve violations
- **Cannot use for “Blocking the Box”** violations – Limited to Red Light
- Requires RFP Process

Settlers, Mallory Ramp & Bridge Closures Phase III

Settlers Landing Road & I-64 (eastbound on-ramp) - Option #1A



Mallory St. & I-64 (eastbound on-ramp) - Option #1B



Mallory St. & I-64 (eastbound on-ramp) - Option #2B



Settlers, Mallory Ramp & Bridge Closures Phase III

Pros

- Will prevent I-64 East traffic from using downtown and Phoebus to “bypass” interstate backups during PM peak.
- Decreased traffic congestion on Settlers Landing Road, Mallory Street and nearby roadways in the Phoebus area also at the Fire Station on Hope Street.

Cons

- REQUIRES VDOT/FHWA AUTHORIZATION
- Penalizes the residents/workers/students of Hampton rather than the actual culprits (interstate thru traffic).
- Cost to implement and operate.
- Increased congestion in the LaSalle/Armistead Area, which already have short entrance lanes to the interstate.

Questions

