

# SPORTS PARK L







**PROPOSED  
LOCATION**

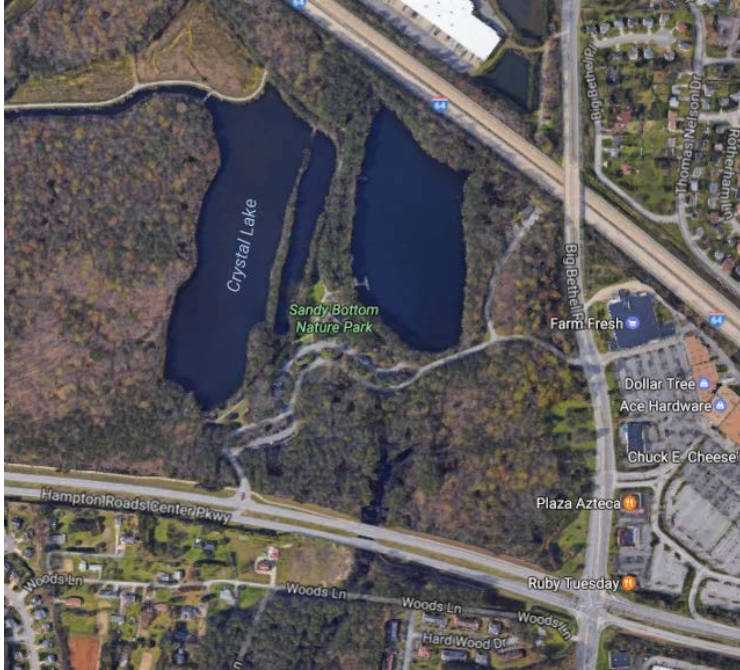




**PROPOSED  
LOCATION**



# Sandy Bottom



# Pier North



# Mill Point



# River Street



**Researched  
LOCATIONS**





**SPORTS PARK L**



water depth

2,5m  
8'-2"



dimensions

51 x 40m  
167' x 131'

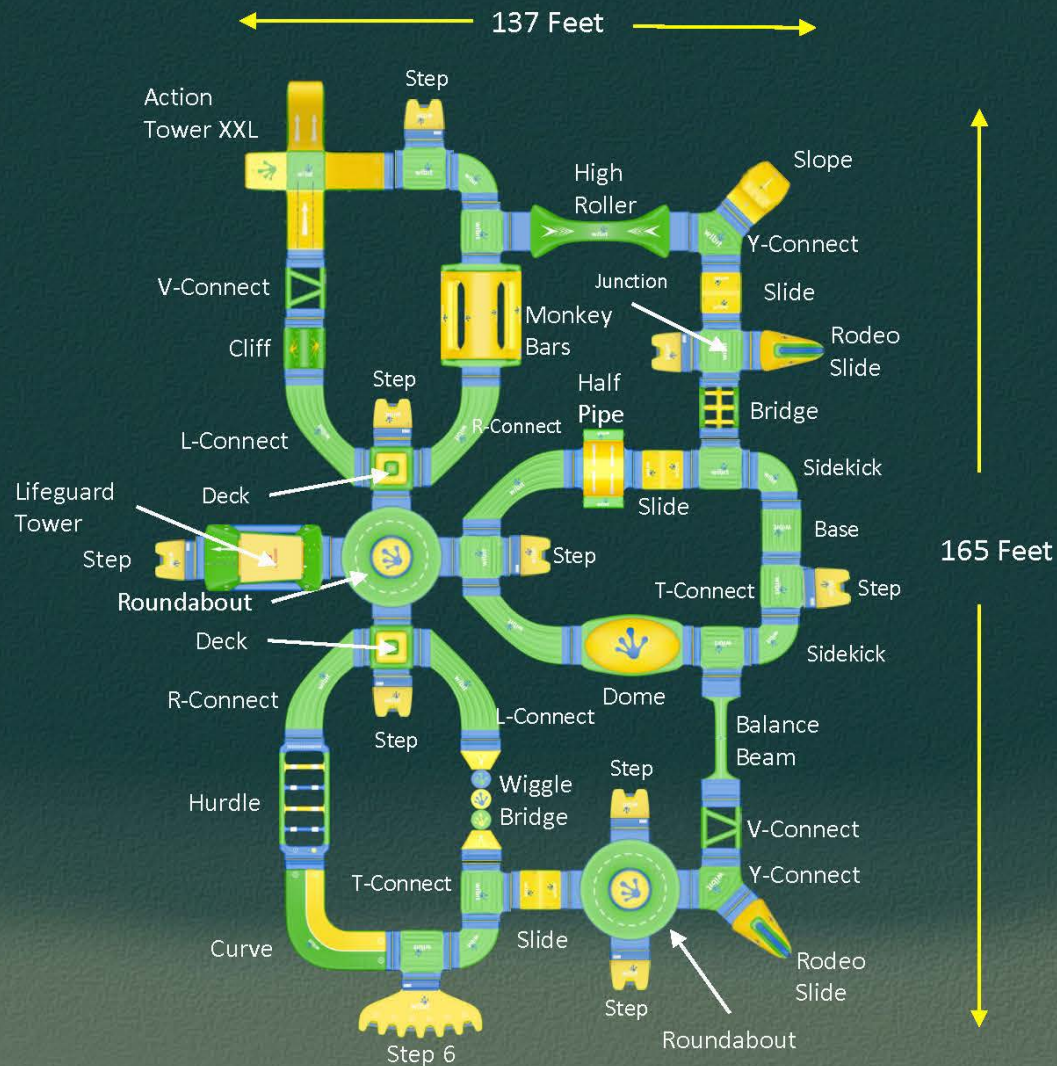


capacity

**120 - 140**

Recommended  
for ages 7+





# CUSTOM HAMPTON PARK



## Action Tower XXL



Big tower action when you test your endurance through climbing, jumping, crawling and sliding. Test your balance, coordination and team building skills with this combination climber/slide.

**Dimensions:** 30' L x 25' W x 10' H

**Minimum Water Depth:** 7' 10"

**Capacity:** 8 People

**Weight:** 672 lbs



## Dome



An obstacle with a bounce! Challenge your athletic ambition and start a jumping contest on the Dome to find out who can make the highest, farthest, or coolest move.

**Dimensions:** 20' L x 10' W x 4' H

**Minimum Water Depth:** 5' 10"

**Capacity:** 2 People

**Weight:** 216 lbs

**CUSTOM  
HAMPTON  
PARK**





## Lifeguard Tower

Optimal height, ideal placement. A perfect overview. With your lifeguard positioned at the center of the action, response and rescue time improves.



**Dimensions:** 20' L x 10' W x 13' H

**Minimum Water Depth:** 7' 2"

**Capacity:** 2 People

**Weight:** 392 lbs



## Wiggly Bridge

Put a little wiggle in your water! This topsy-turvy FlatTop™ course comes in three standard sizes – 12 discs, 6 or 3. It combines speed, strength, and agility for the ultimate balance challenge. Includes a ramp at each end.

**Dimensions:** 23' L x 5' W x 5' H (WB3),

33' L x 5' W x 5' H (WB6), 53' L x 5' W x 5' H (WB12)

**Minimum Water Depth:** 3' 11"

**Capacity:** 3 People, 6 people, 12 people

**Weight:** 79 lbs, 118 lbs, 196 lbs

**CUSTOM  
HAMPTON  
PARK**

— Sole Source Vendor



— Approximately \$178,000 - to be purchased with Strategic Priority Project funding for Water Sports

Includes equipment, installation training, life jackets, signage, operational training, maintenance equipment & training

\*must purchase anchors separately\*



— 3 additional lifeguards required (approx. \$27,000)



— \$5/hour recommended fee



— no increase in current insurance rates

**COST & REVENUE**



Phasing? Yes, it's possible.

### **SPORTS PARK S**



Approximately \$100,000



capacity

40-60 people

### **SPORTS PARK M**



Approximately \$130,000



capacity

80-100 people

## **ALTERNATIVE PARK SIZES**



Installation & removal each takes 3 - 4 hours  
COH staff will be trained on procedure



Off-season dry storage



With proper maintenance & storage, 4 to 8 year lifespan



3 year manufacturer warranty against defects

**EQUIPMENT**





— coordinating nighttime security & monitoring  
with fishing pier



— VMRC - Joint Permit Application

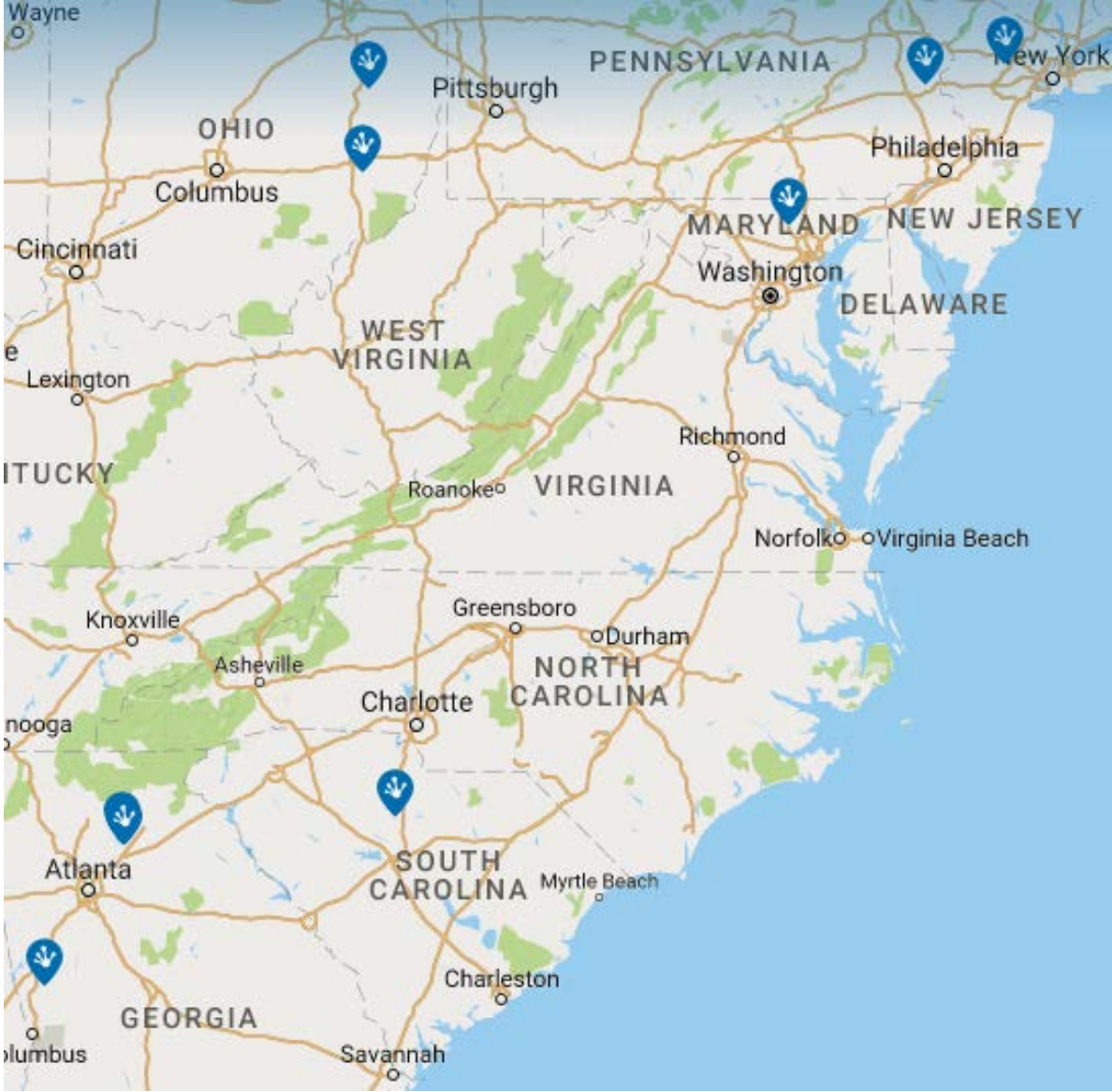
# Lake Perris, CA



# Sunwest Park, FL



# Lanier Islands, GA



# OTHER LOCATIONS