

VA70330D - Coverage Prediction

POR Details:

Objective = Capacity

Type = Cell Split

Offload sector(s) = VA50156C2, VA30100B

Site Details:

Universal Wireless-Greenlawn

700 Greenlawn Ave , Hampton VA 23661




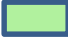
Rad center = 165' RC

Azimuth = (30/120/200/300)




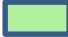
EDT = 2/2/2/2

Config = 797DB



	>= -91 dBm (in-bldg commercial)
	>= -97 dBm (in-bldg residential)
	>= -114 dBm (in-vehicle)
	>= -120 dBm (outdoor)

L21/L19 Policy 4.2

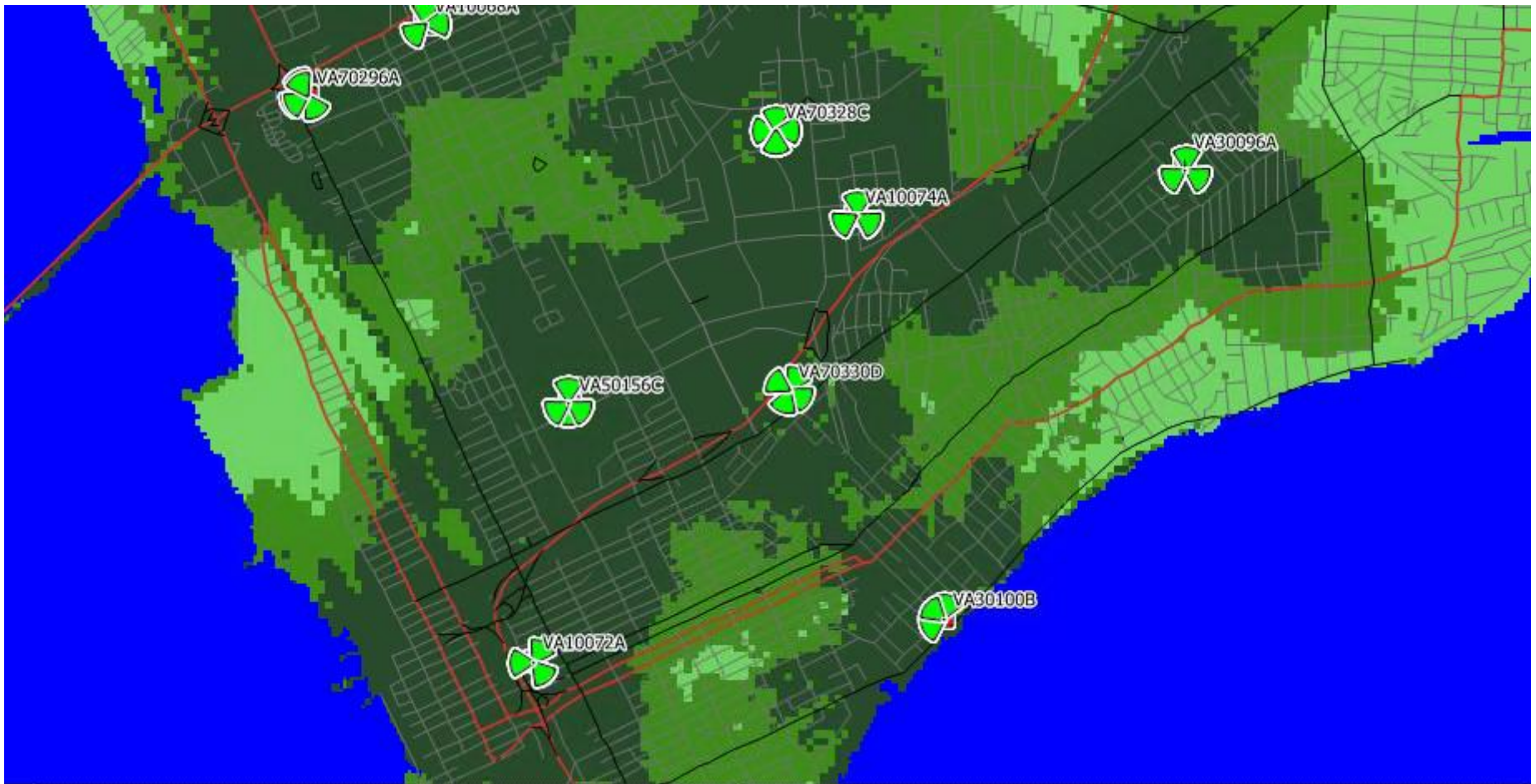
	>= -88 dBm (in-bldg commercial)
	>= -97 dBm (in-bldg residential)
	>= -112 dBm (in-vehicle)
	>= -118 dBm (outdoor)

L700 Policy 4.2

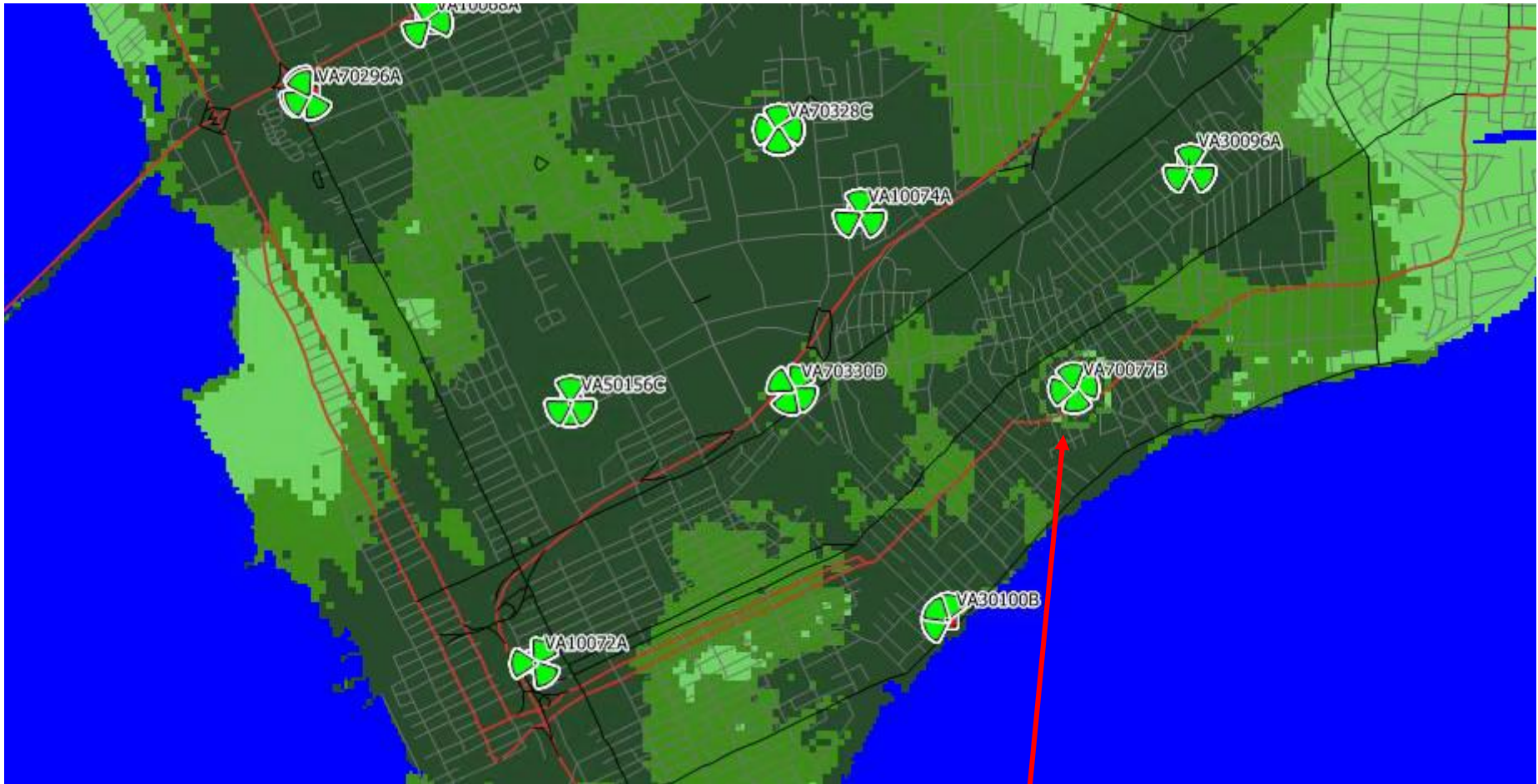
Existing L21 coverage



L21 coverage with VA70330D



L21 coverage with VA70330D & VA70077B



Parallel Hampton Cemetery site at 150' rad center