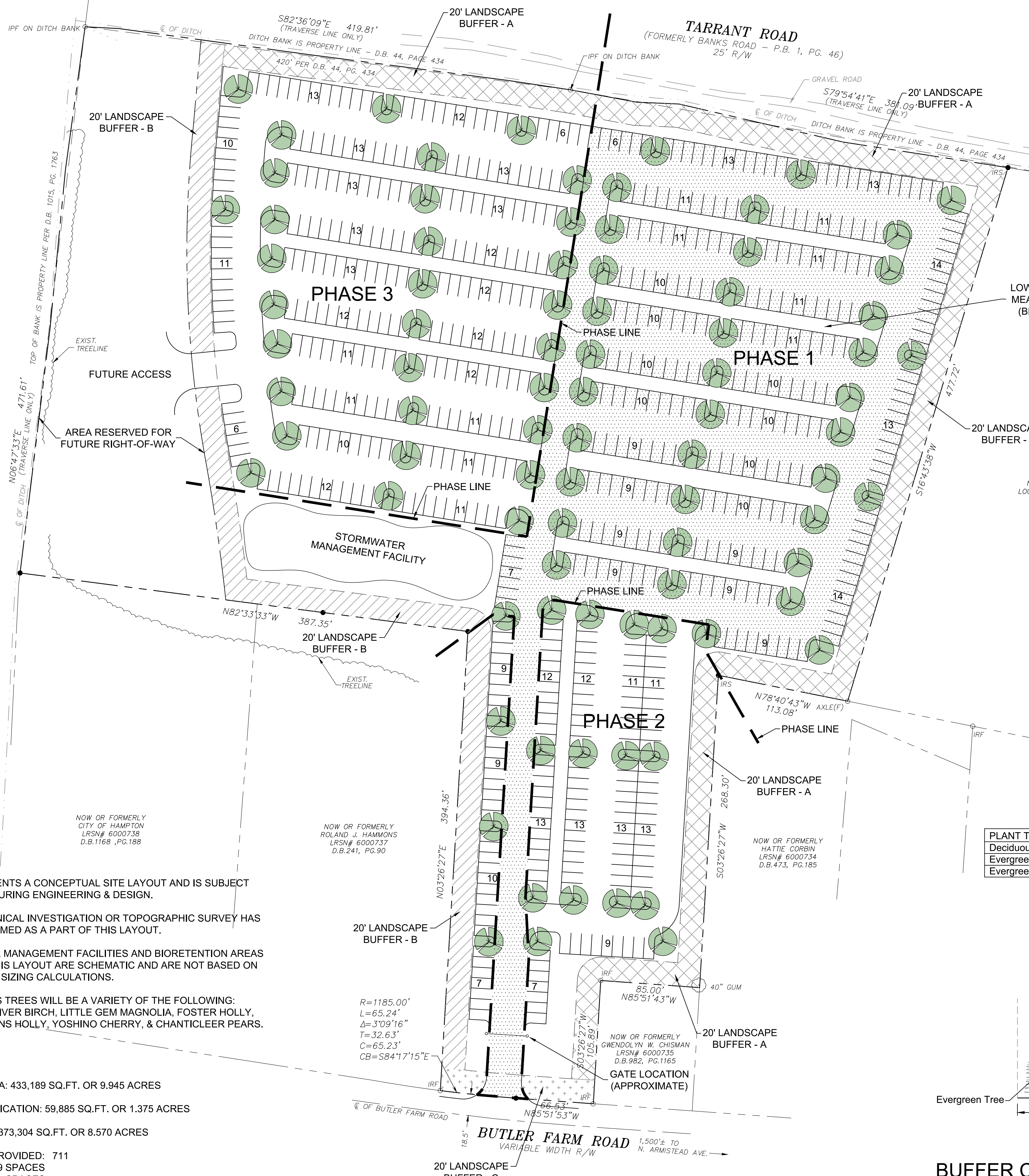


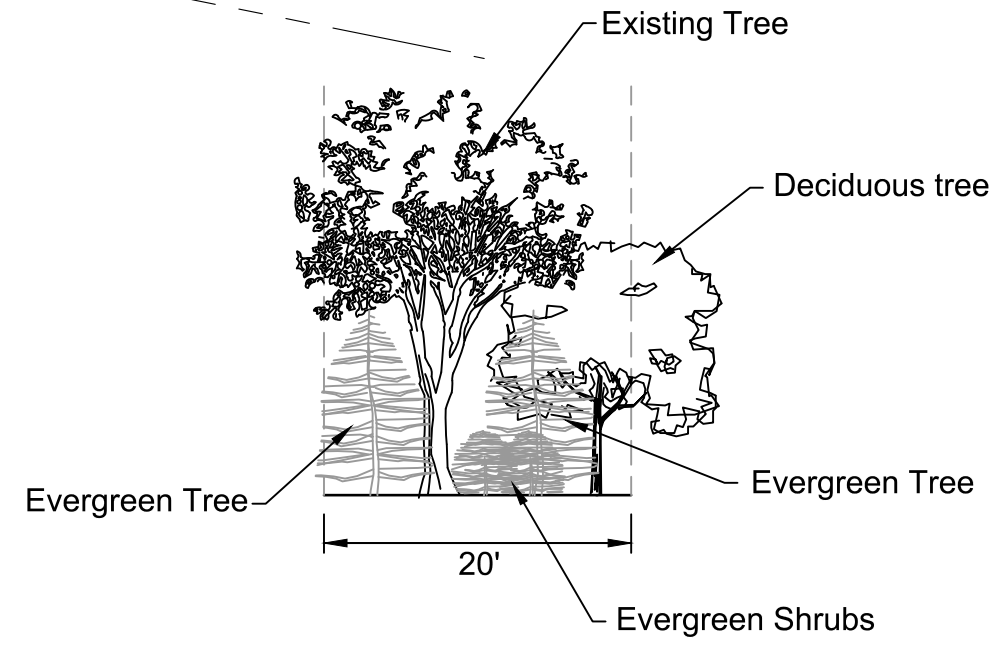
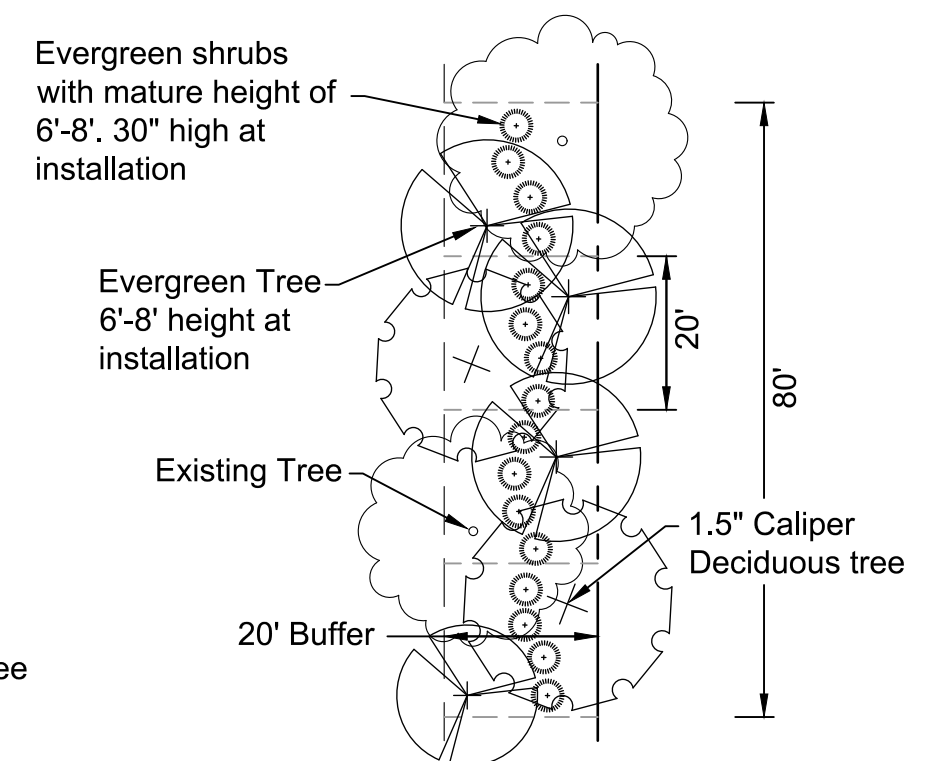
NOW OR FORMERLY
ANIMAL AID SOCIETY, INC.
LRSN# 6000739
D.B.1015, PG.1760



LEGEND

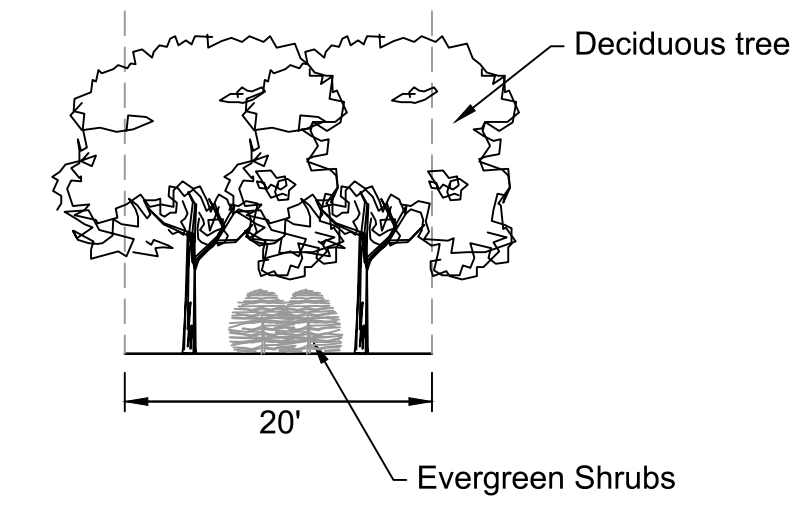


BUFFER A - PLAN VIEW

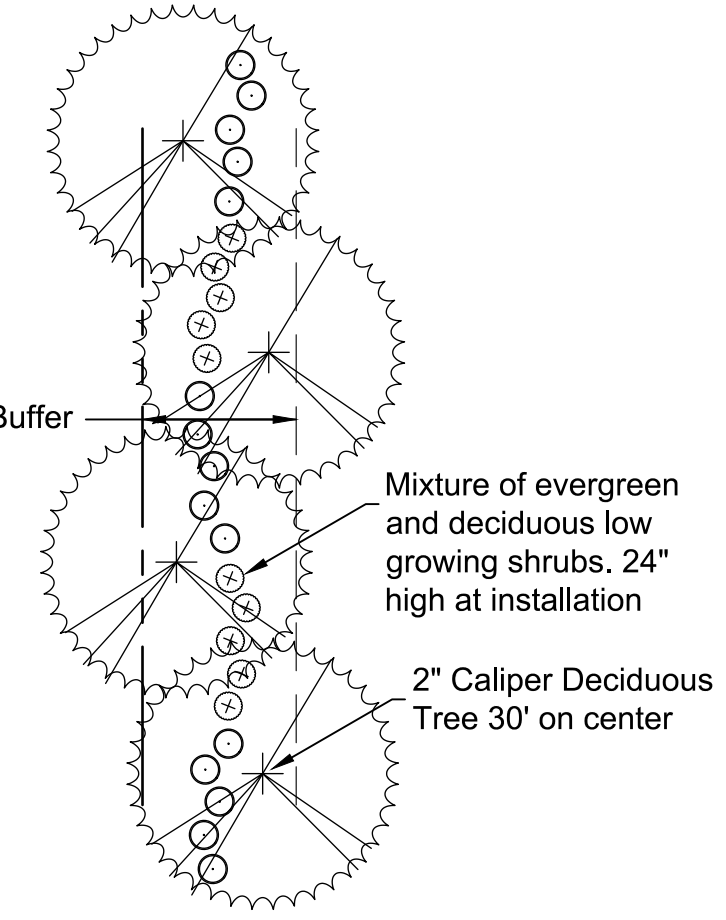


BUFFER A - CROSS SECTION

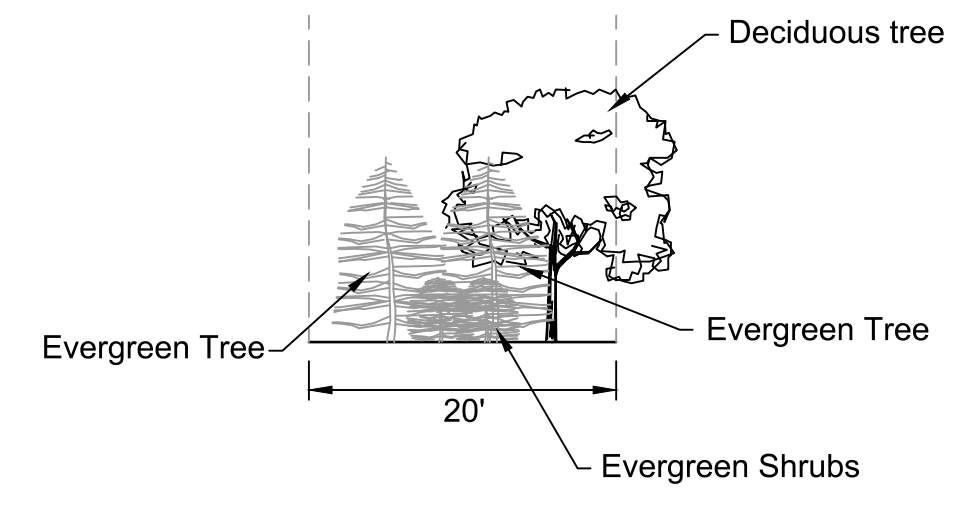
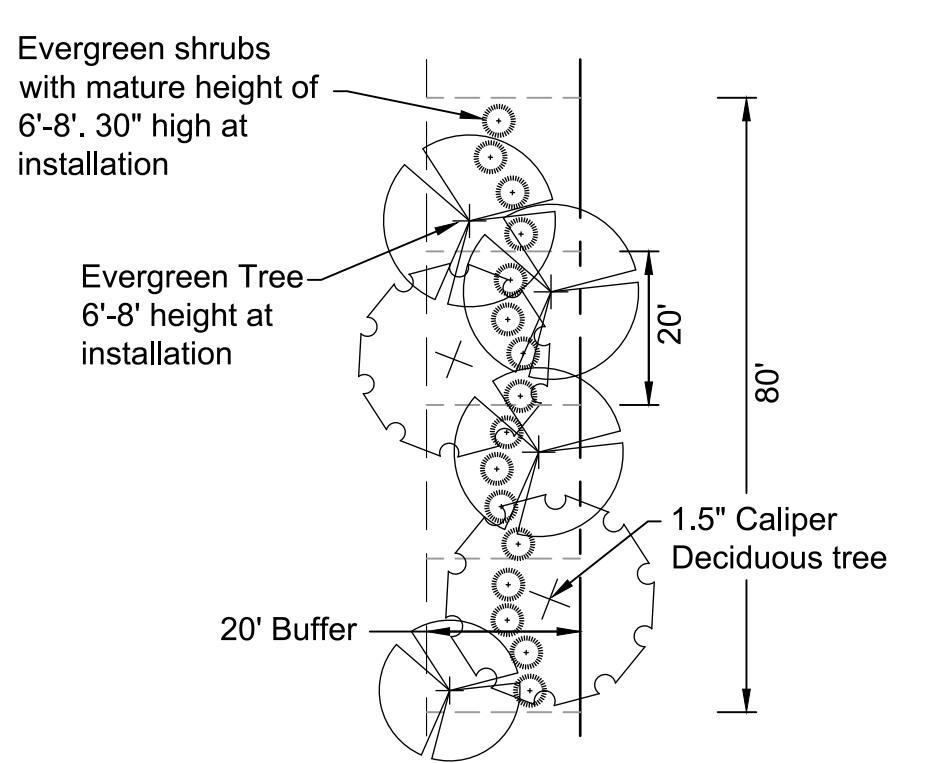
BUFFER B - PLAN VIEW



BUFFER B - CROSS SECTION



BUFFER C - PLAN VIEW



BUFFER C - CROSS SECTION

PLANT TYPE	INSTALLED SIZE
Deciduous Shade Tree	1.5" - 2" Caliper
Evergreen Tree	6'-8" Height
Evergreen Shrub	24"-30" Height

- GENERAL NOTES:**
1. THIS REPRESENTS A CONCEPTUAL SITE LAYOUT AND IS SUBJECT TO CHANGE DURING ENGINEERING & DESIGN.
 2. NO GEOTECHNICAL INVESTIGATION OR TOPOGRAPHIC SURVEY HAS BEEN PERFORMED AS A PART OF THIS LAYOUT.
 3. STORMWATER MANAGEMENT FACILITIES AND BIORETENTION AREAS SHOWN ON THIS LAYOUT ARE SCHEMATIC AND ARE NOT BASED ON ENGINEERING SIZING CALCULATIONS.
 4. PARKING LOTS TREES WILL BE A VARIETY OF THE FOLLOWING: RED MAPLE, RIVER BIRCH, LITTLE GEM MAGNOLIA, FOSTER HOLLY, NELLIE STEVENS HOLLY, YOSHINO CHERRY, & CHANTICLEER PEARS.

SITE STATISTICS:

TOTAL PARCEL AREA: 433,189 SQ.FT. OR 9.945 ACRES

AREA OF ROAD DEDICATION: 59,885 SQ.FT. OR 1.375 ACRES

NET PARCEL AREA: 373,304 SQ.FT. OR 8.570 ACRES

PARKING SPACES PROVIDED: 711

PHASE 1: 289 SPACES
PHASE 2: 149 SPACES
PHASE 3: 273 SPACES

0 25' 50' 100'
SCALE: 1"=50'

NO.	DATE	REVISION

ATCS, P.L.C.
ENGINEERING • PLANNING • SURVEYING
11815 Fountain Way, Suite 300
Newport News, Virginia 23606
(757) 594-2976 • Fax (757) 637-0276
Hemdon, Va. • Washington, D.C. • Waldorf, Md. • Baltimore, Md. • Christiansburg, Va. • Culpeper, Va.

JONAH Z, LLC
CONCEPTUAL SITE LAYOUT
HAMPTON, VIRGINIA

DWG. NO. 004014
DATE: OCT 24, 2017
SCALE: 1" = 50'

SHEET CS101

SHEET NO. 1 OF 1