



775 Yard Street, Suite 325  
Columbus, Ohio 43212  
P 614.764.0477  
F 614.764.0237  
www.ma-architects.com

SITE OF EXISTING MACYS

Extended Stay Hotel at Peninsula Town Center

3000 ALLIANCE WAY | HAMPTON, VIRGINIA 23666 |

STATUS:

PRELIMINARY  
NOT FOR CONSTRUCTION

REVISION:

PROJECT NUMBER:  
2016.147  
DRAWN BY:  
AP / JL  
DATE:  
10 FEBRUARY 2017  
SHEET TITLE:  
HOTEL FIRST FLOOR PLAN  
SHEET NUMBER:

A2.1

ma architects

GENERAL FLOOR PLAN NOTES

- A. REFER TO WALL TYPE SCHEDULE ON SHEET A0.2 FOR WALL TYPES NOTED THIS.
- B. DOORS SHOWN IN A CORNER SHALL HAVE THE INSIDE FACE OF THE JAMB 3-1/2" FROM THE NEAREST WALL FINISH. DOORS SHOWN IN THE MIDDLE OF A WALL SHALL BE CENTERED BETWEEN THE CORNERS. SEE PLAN DIMENSIONS FOR THE LOCATION OF THE INSIDE FACE OF THE JAMB AT UNIT PLANS AND ALL OTHER LOCATIONS.
- C. ROOM NUMBERS USED HERE ARE FOR THE PURPOSES OF THIS PROJECT. VERIFY ANY FINAL ROOM NUMBERING SYSTEM WITH THE OWNER PRIOR TO MAKING FINAL MARKS OR SCHEDULES RELATED TO ROOM NUMBERS.
- D. PATCH AND REPAIR ANY SURFACE OR OTHER ITEM DAMAGED BY OR INVOLVED IN CONSTRUCTION ACTIVITIES TO "AS NEW". REFER TO ENGINEERING DRAWINGS FOR P.M.I.E. WORK THAT MAY REQUIRE PATCHING BY GENERAL TRADES CONTRACTOR.
- E. ALL WINDOW OPENINGS ARE TO THE ROUGH OPENING. WINDOW MFR TO ACCOUNT FOR SHM SPACE.
- F. COORDINATE ALL EQUIPMENT LOCATIONS AND MILLWORK DRAWINGS WITH INTERIOR DESIGN DRAWINGS AND VENDOR SUPPLIED DRAWINGS.
- G. ALL OUTSIDE CORNERS IN PUBLIC AREAS SHALL RECEIVE CORNER GUARDS.
- H. REFER TO ELECTRICAL DRAWINGS FOR ADA COMMUNICATION FEATURE REQUIREMENTS. REFER TO OVERALL FLOOR PLAN FOR LOCATIONS.

1ST FLOOR:  
~36,545

MAIN  
ENTRANCE

CAFE

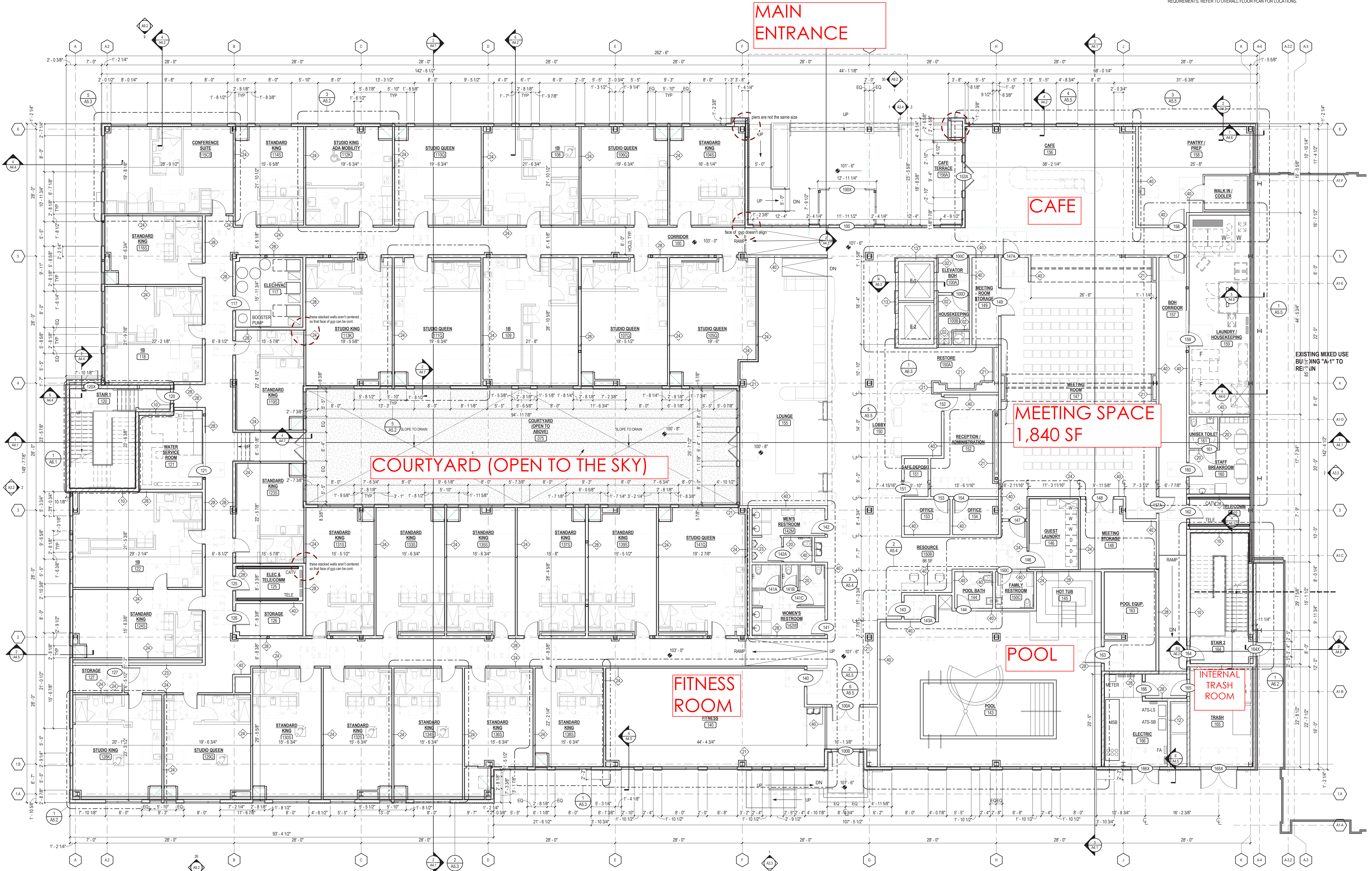
MEETING SPACE  
1,840 SF

COURTYARD (OPEN TO THE SKY)

FITNESS  
ROOM

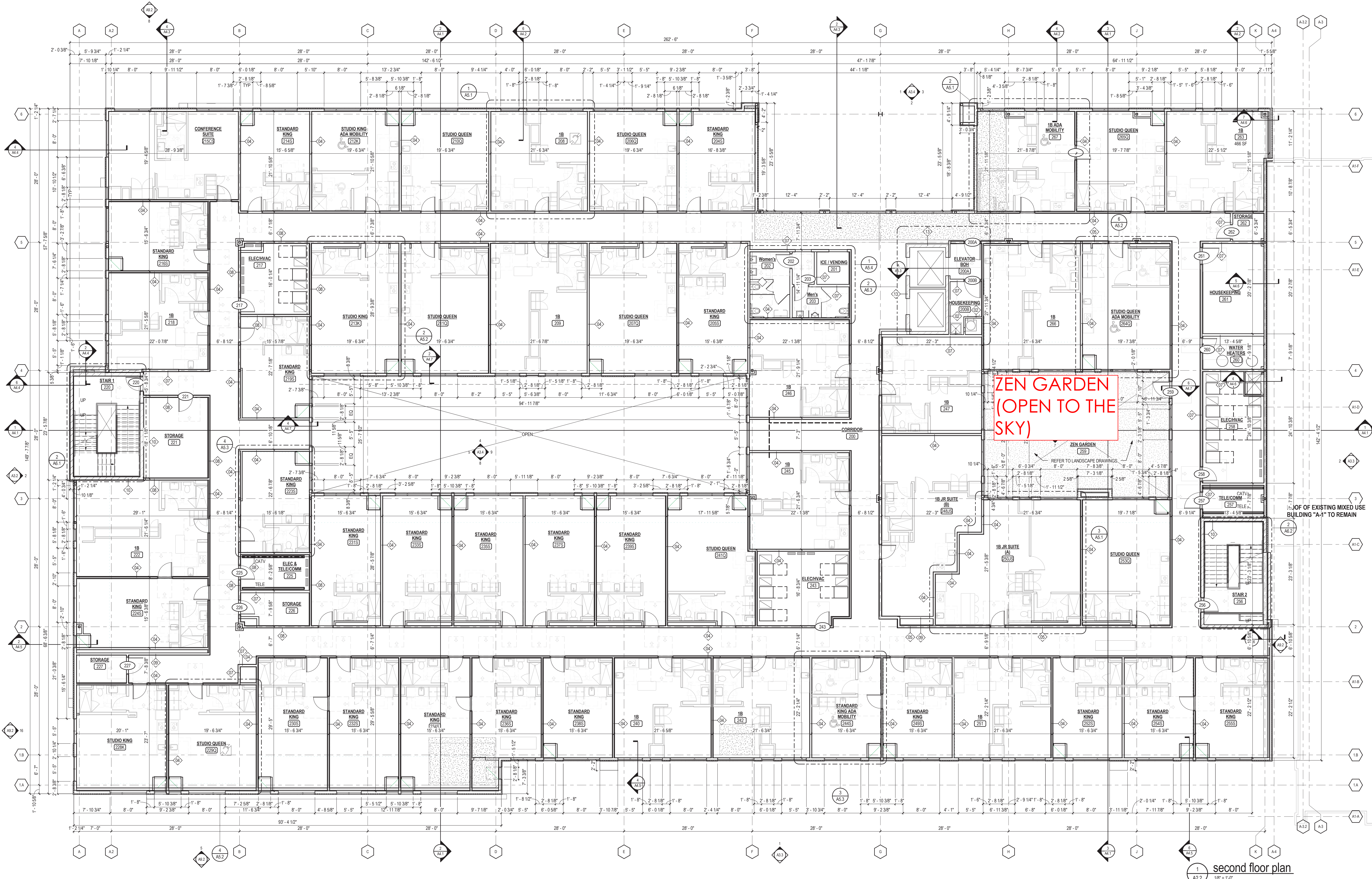
POOL

INTERNAL  
TRASH ROOM



1 first floor plan  
A2.1 1/8" = 1'-0"

**2ND FLOOR:**  
~32,940



- GENERAL FLOOR PLAN NOTES**
- REFER TO WALL TYPE SCHEDULE ON SHEET A0.2 FOR WALL TYPES NOTED THIS.
  - DOORS SHOWN IN A CORNER SHALL HAVE THE INSIDE FACE OF THE JAMB 3-1/2" FROM THE NEAREST WALL FINISH. DOORS SHOWN IN THE MIDDLE OF A WALL SHALL BE CENTERED BETWEEN THE CORNERS. SEE PLAN DIMENSIONS FOR THE LOCATION OF THE INSIDE FACE OF THE JAMB AT UNIT PLANS AND ALL OTHER LOCATIONS.
  - ROOM NUMBERS USED HERE ARE FOR THE PURPOSES OF THIS PROJECT. VERIFY ANY FINAL ROOM NUMBERING SYSTEM WITH THE OWNER PRIOR TO MAKING FINAL MARKS OR SCHEDULES RELATED TO ROOM NUMBERS.
  - PATCH AND REPAIR ANY SURFACE OR OTHER ITEM DAMAGED BY OR INVOLVED IN CONSTRUCTION ACTIVITIES TO "AS NEW". REFER TO ENGINEERING DRAWINGS FOR P.M.E. WORK THAT MAY REQUIRE PATCHING BY GENERAL TRADES CONTRACTOR.
  - ALL WINDOW OPENINGS ARE TO THE ROUGH OPENING. WINDOW MFR TO ACCOUNT FOR SHIM SPACE.
  - COORDINATE ALL EQUIPMENT LOCATIONS AND MILLWORK DRAWINGS WITH INTERIOR DESIGN DRAWINGS AND VENDOR SUPPLIED DRAWINGS.
  - ALL OUTSIDE CORNERS IN PUBLIC AREAS SHALL RECEIVE CORNER GUARDS.
  - REFER TO ELECTRICAL DRAWINGS FOR ADA COMMUNICATION FEATURE REQUIREMENTS. REFER TO OVERALL FLOOR PLAN FOR LOCATIONS.

**ma**

775 Yard Street, Suite 325  
Columbus, Ohio 43212  
p 614.764.0407  
f 614.764.0237  
www.ma-architects.com

SITE OF EXISTING MACYS

**Extended Stay Hotel at Peninsula Town Center**

3000 ALLIANCE WAY | HAMPTON, VIRGINIA 23666 |

STATUS: **PRELIMINARY**  
NOT FOR CONSTRUCTION

REVISION:

NO.	DATE	DESCRIPTION

PROJECT NUMBER: 2016.147  
DRAWN BY: AP / JL  
DATE: 10 FEBRUARY 2017  
SHEET TITLE: HOTEL SECOND FLOOR PLAN  
SHEET NUMBER: A2.2

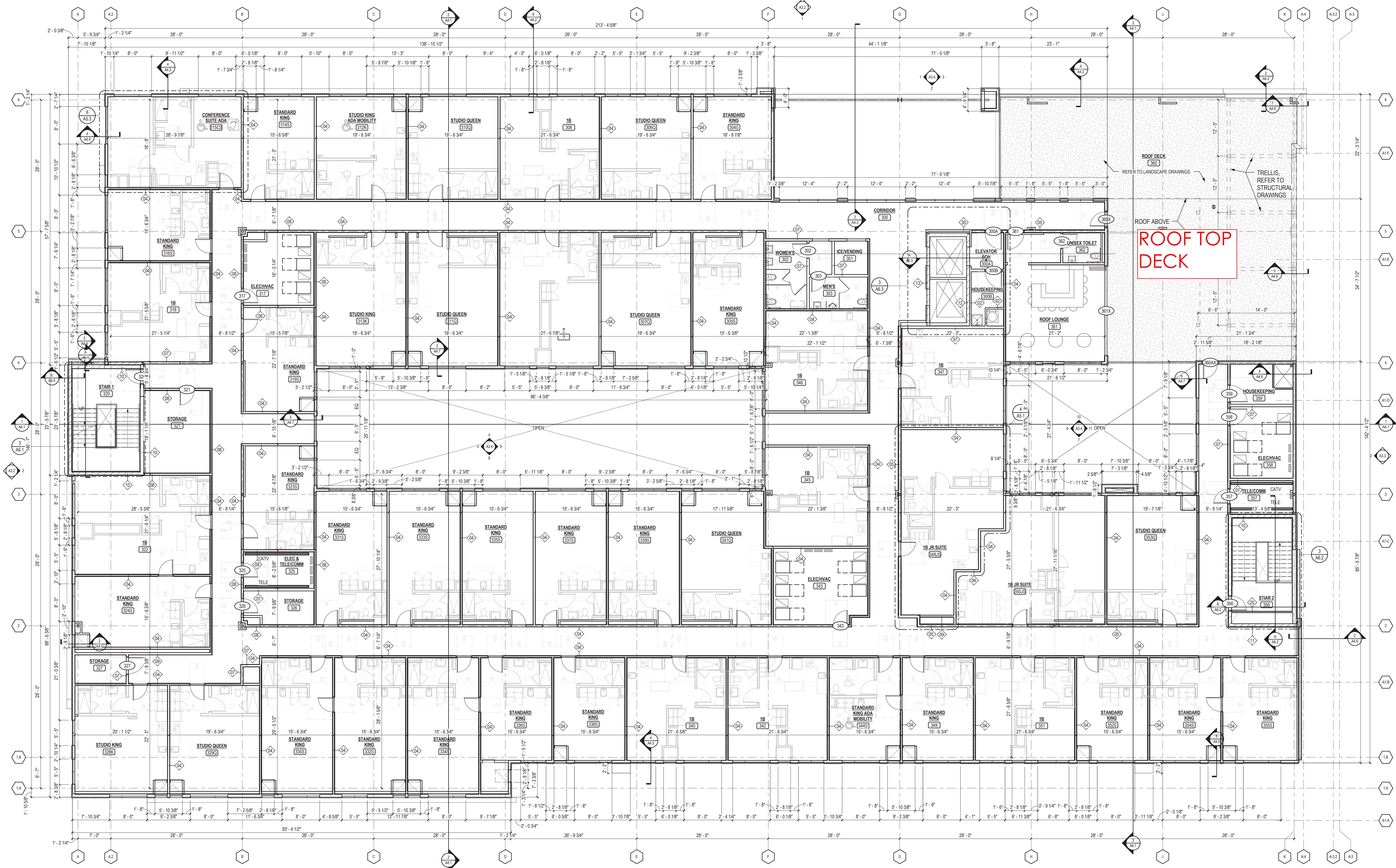
ma architects

**3RD FLOOR:  
~31,805**

**GENERAL FLOOR PLAN NOTES**

- A. REFER TO WALL TYPE SCHEDULE ON SHEET A0.2 FOR WALL TYPES NOTED THIS.
- B. DOORS SHOWN IN A CORNER SHALL HAVE THE INSIDE FACE OF THE JAMB 3-1/2" FROM THE NEAREST WALL FINISH. DOORS SHOWN IN THE MIDDLE OF A WALL SHALL BE CENTERED BETWEEN THE CORNERS. SEE PLAN DIMENSIONS FOR THE LOCATION OF THE INSIDE FACE OF THE JAMB AT UNIT PLANS AND ALL OTHER LOCATIONS.
- C. ROOM NUMBERS USED HERE ARE FOR THE PURPOSES OF THIS PROJECT. VERIFY ANY FINAL ROOM NUMBERING SYSTEM WITH THE OWNER PRIOR TO MAKING FINAL MARKS OR SCHEDULES RELATED TO ROOM NUMBERS.
- D. PATCH AND REPAIR ANY SURFACE OR OTHER ITEM DAMAGED BY OR INVOLVED IN CONSTRUCTION ACTIVITIES TO "AS NEW". REFER TO ENGINEERING DRAWINGS FOR P.I.M.E. WORK THAT MAY REQUIRE PATCHING BY GENERAL TRADES CONTRACTOR.
- E. ALL WINDOW OPENINGS ARE TO THE ROUGH OPENING. WINDOW MFR TO ACCOUNT FOR SHM SPACE.
- F. COORDINATE ALL EQUIPMENT LOCATIONS AND MILLWORK DRAWINGS WITH INTERIOR DESIGN DRAWINGS AND VENDOR SUPPLIED DRAWINGS.
- G. ALL OUTSIDE CORNERS IN PUBLIC AREAS SHALL RECEIVE CORNER GUARDS.
- H. REFER TO ELECTRICAL DRAWINGS FOR ADA COMMUNICATION FEATURE REQUIREMENTS. REFER TO OVERALL FLOOR PLAN FOR LOCATIONS.

**ma**  
 775 Yard Street, Suite 325  
 Columbus, Ohio 43212  
 P 614.764.0407  
 F 614.764.0237  
 www.ma-architects.com



**ROOF TOP DECK**

SITE OF EXISTING MACYS

**Extended Stay Hotel at Peninsula Town Center**

3000 ALLIAN WAY | HAMPTON, VIRGINIA 23666 |

STATUS:  
**PRELIMINARY**  
 NOT FOR CONSTRUCTION

REVISION:

NO.	DATE	DESCRIPTION

PROJECT NUMBER:  
2016.147  
 DRAWN BY:  
AP / JL  
 DATE:  
10 FEBRUARY 2017  
 SHEET TITLE:  
HOTEL THIRD FLOOR PLAN  
 SHEET NUMBER:  
A2.3