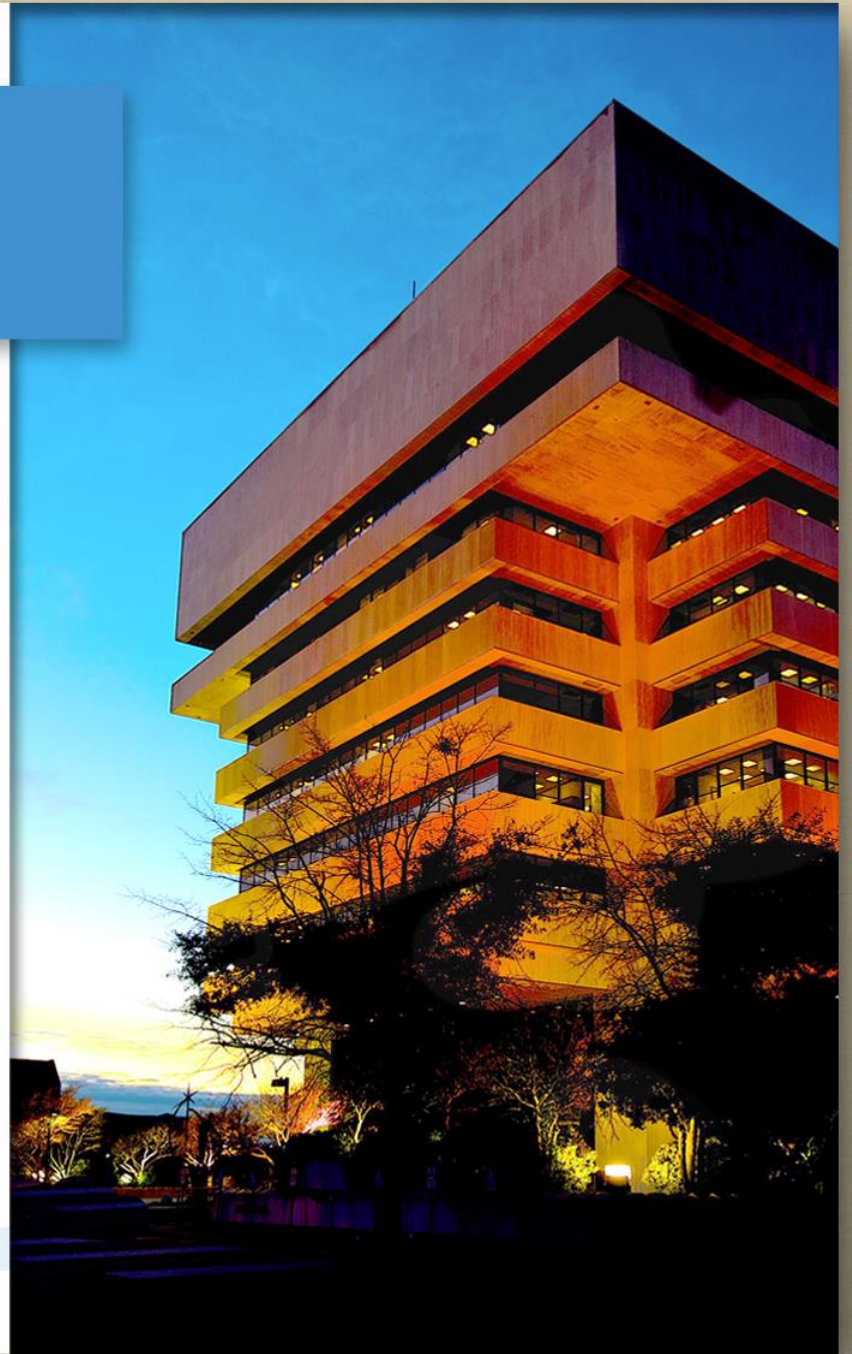


HAMPTON VA

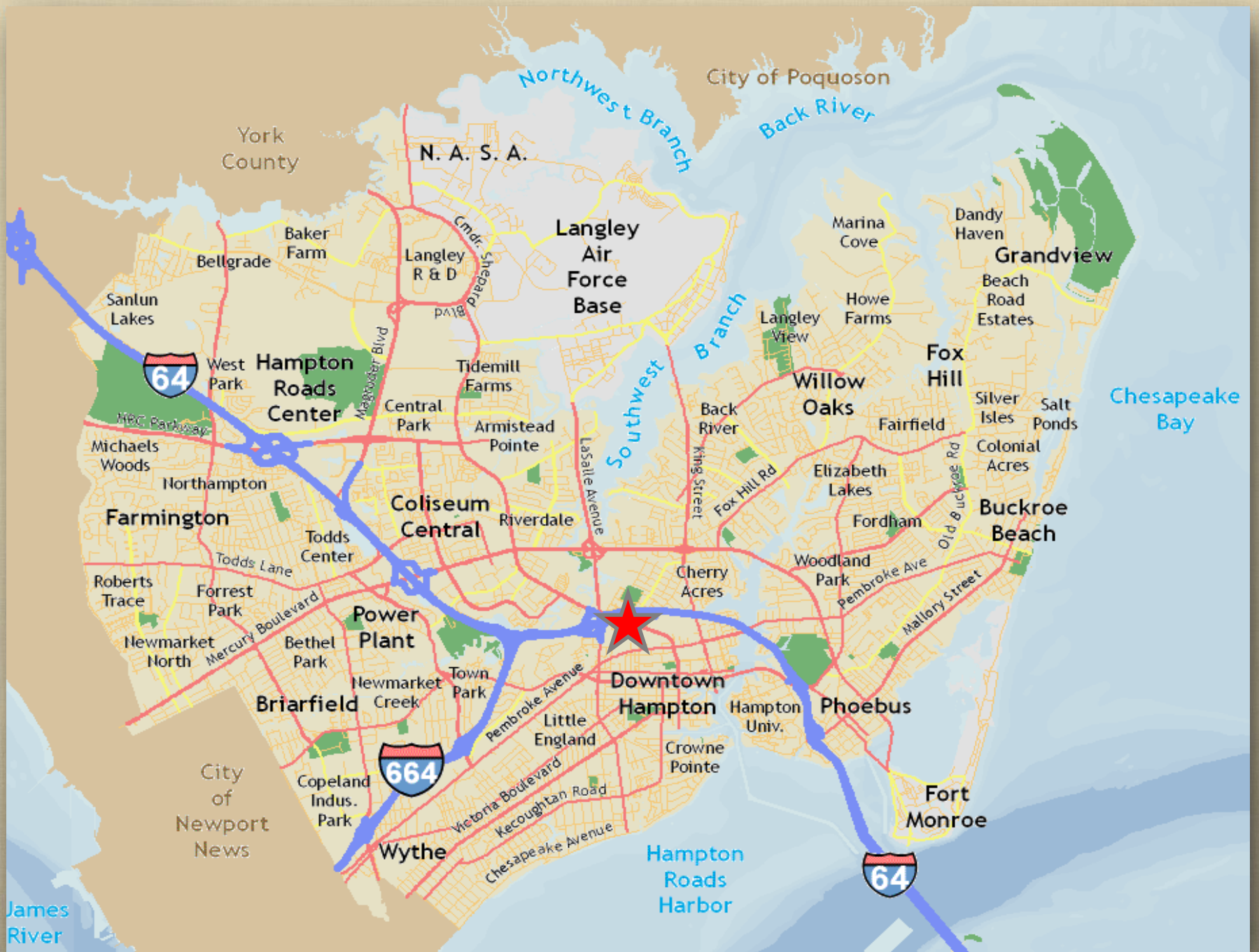
**Use Permit #17-00014
332 Rip Rap Rd
Sectorisite LLC**

**City Council
January 10, 2018**



Application

Use Permit for a Commercial
Communication Tower



York County

City of Poquoson

N. A. S. A.

Langley Air Force Base

64

Hampton Roads Center

Coliseum Central

Downtown Hampton

664

Briarfield

64

Fort Monroe

Hampton Roads Harbor

Chesapeake Bay

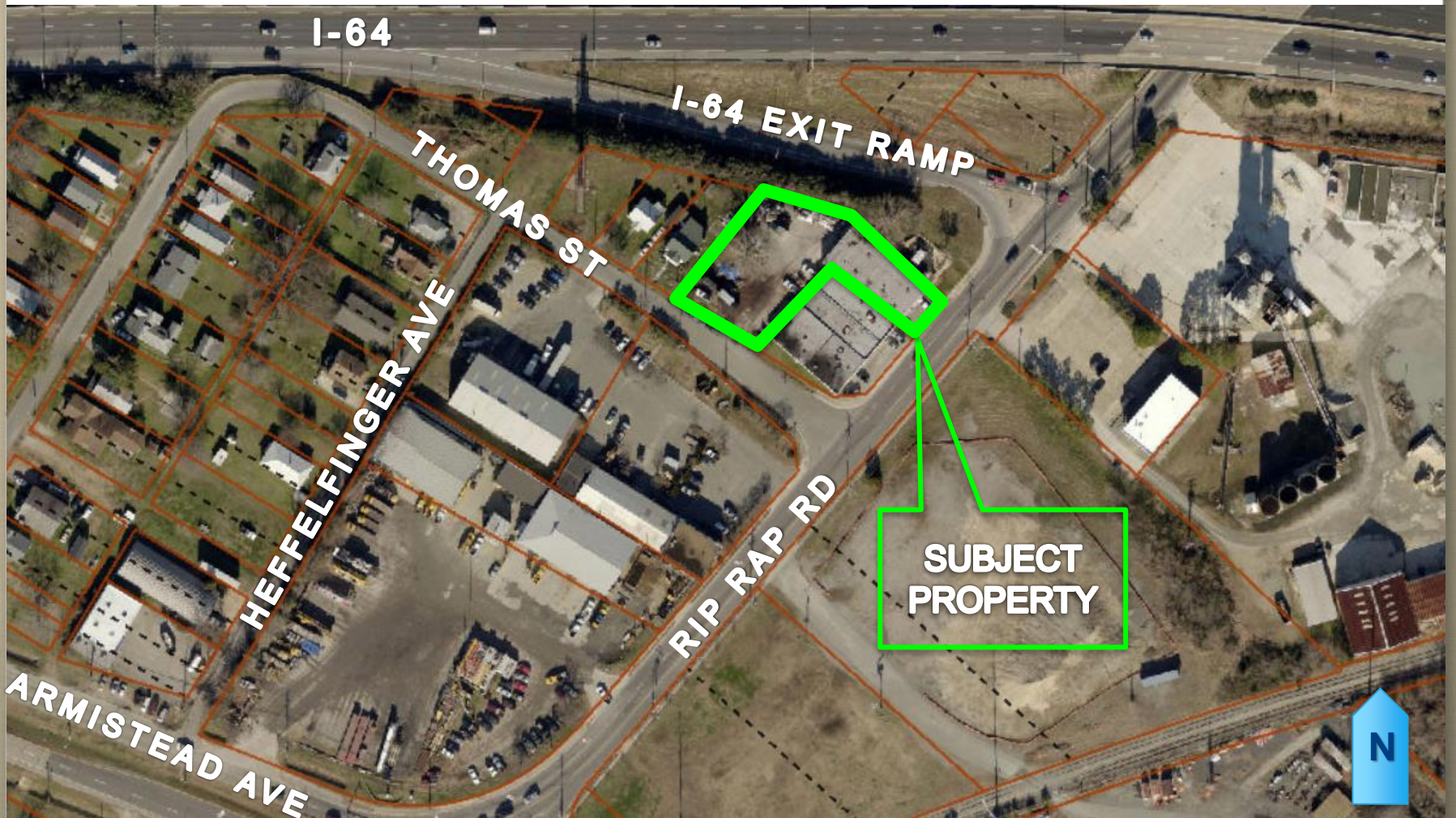
James River

City of Newport News

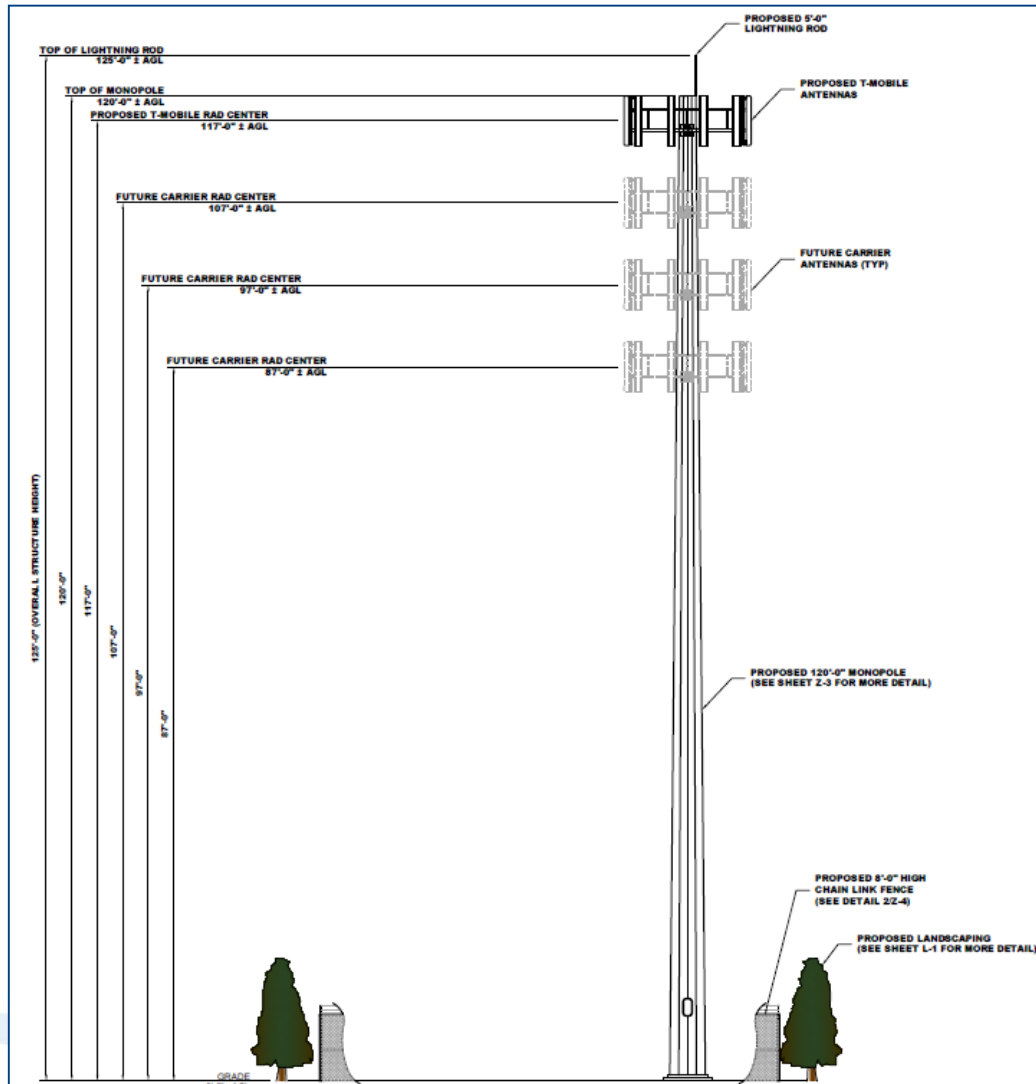
Location



Location

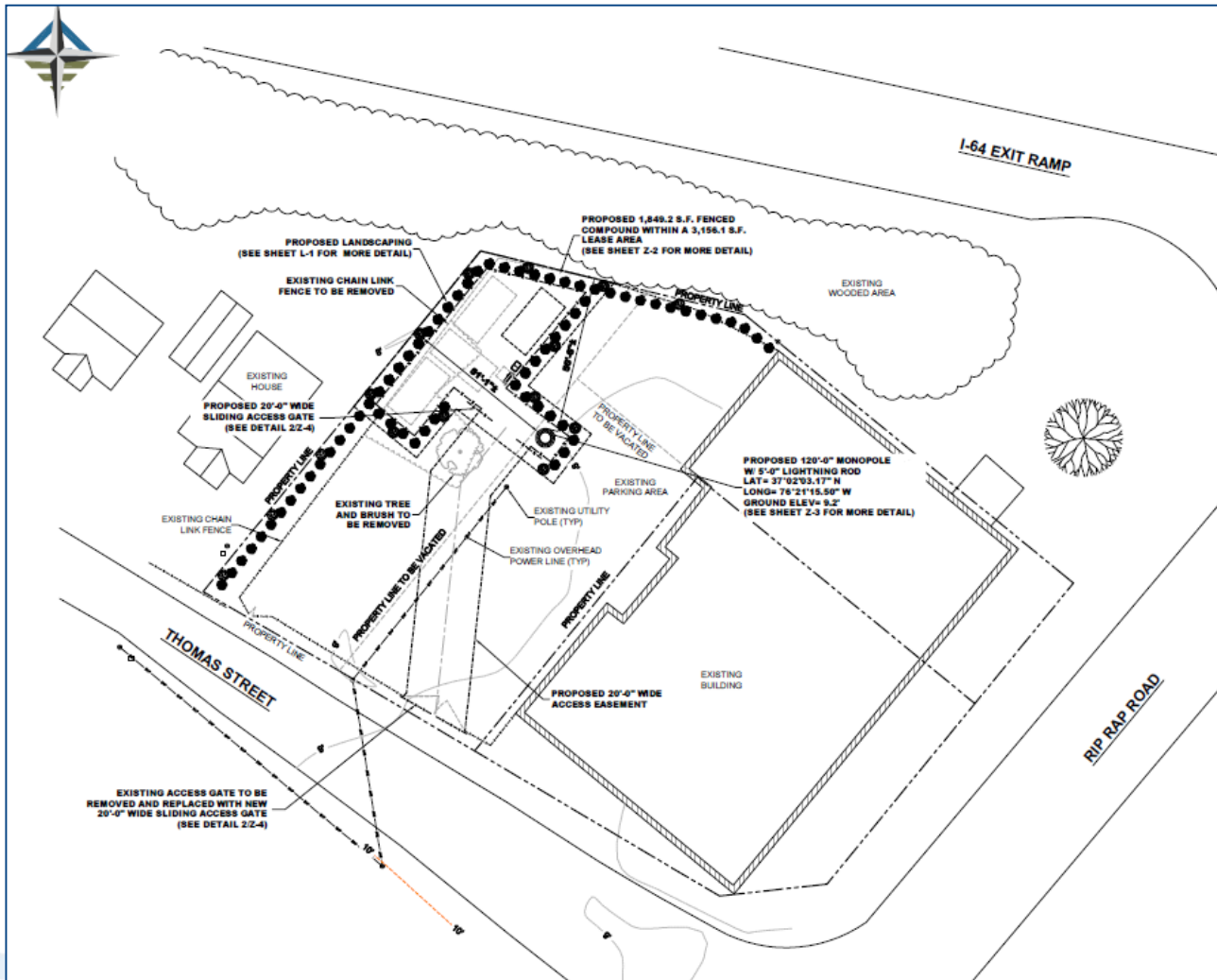


Proposal



- 120' tower + 5' lighting rod
- At least 3 users

Proposal



- 1,849 SF compound
- Gated, 8' fence
- Landscaping

Proposal Purpose

Before

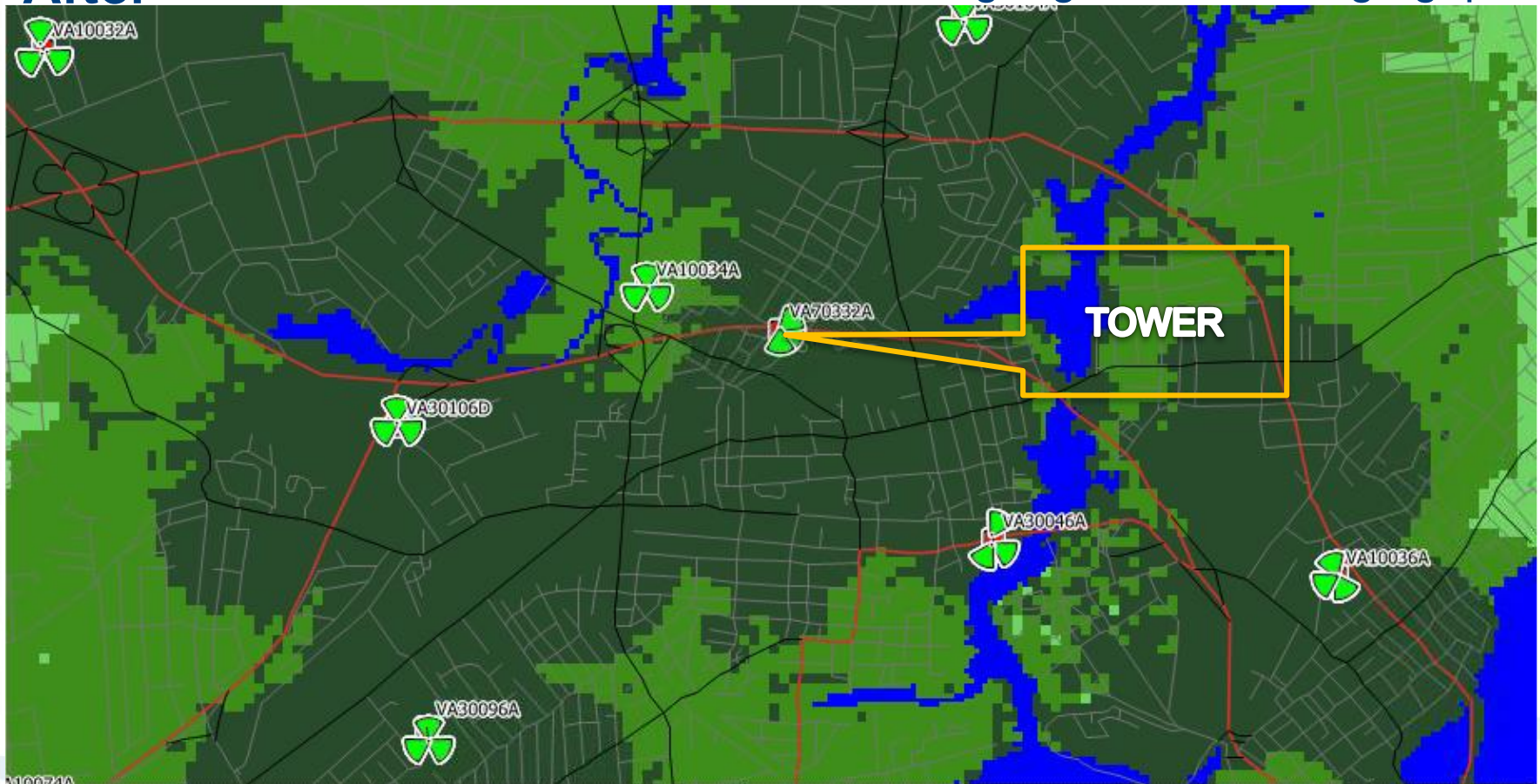
Light green= coverage gap



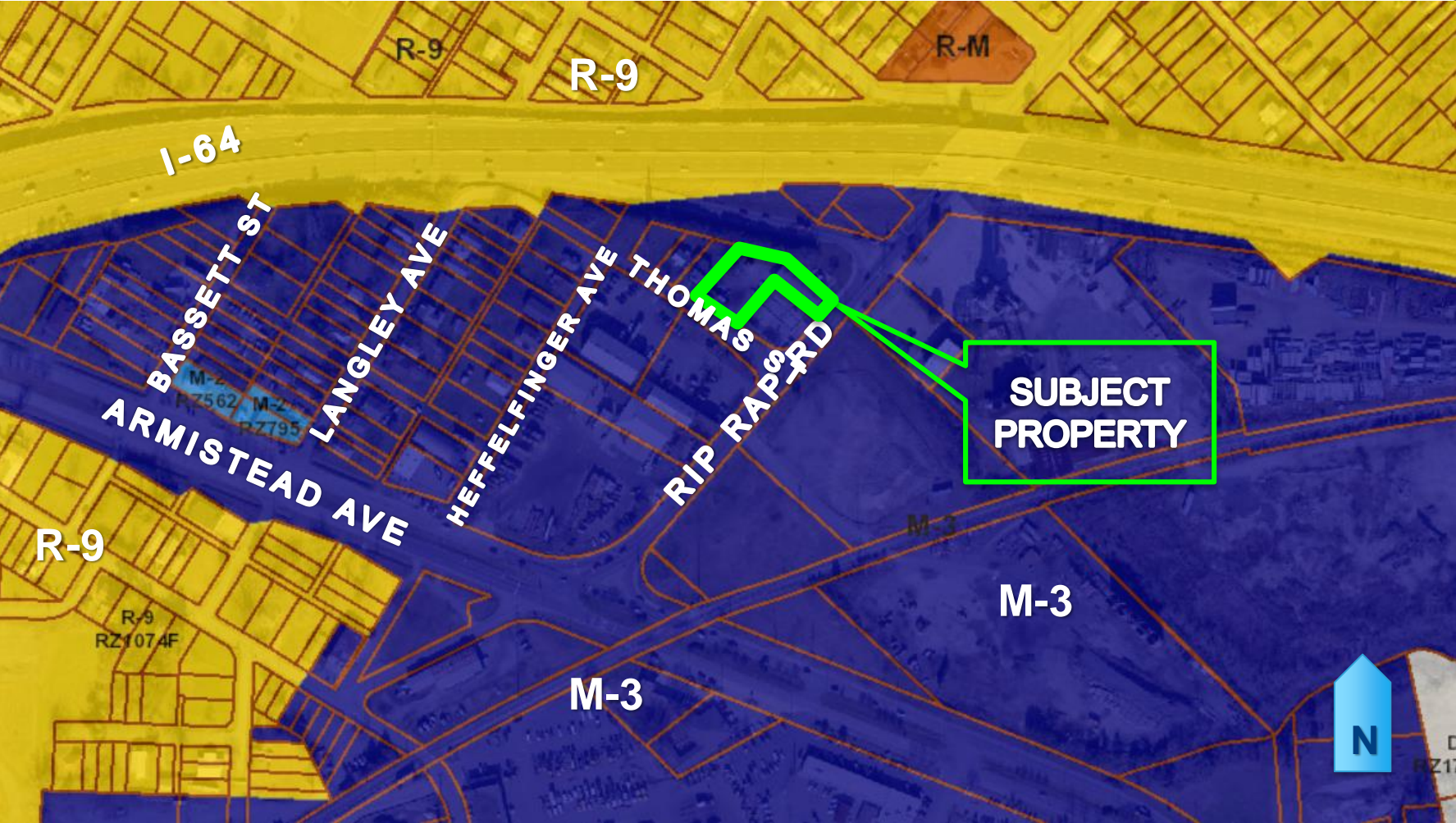
Proposal Purpose

After

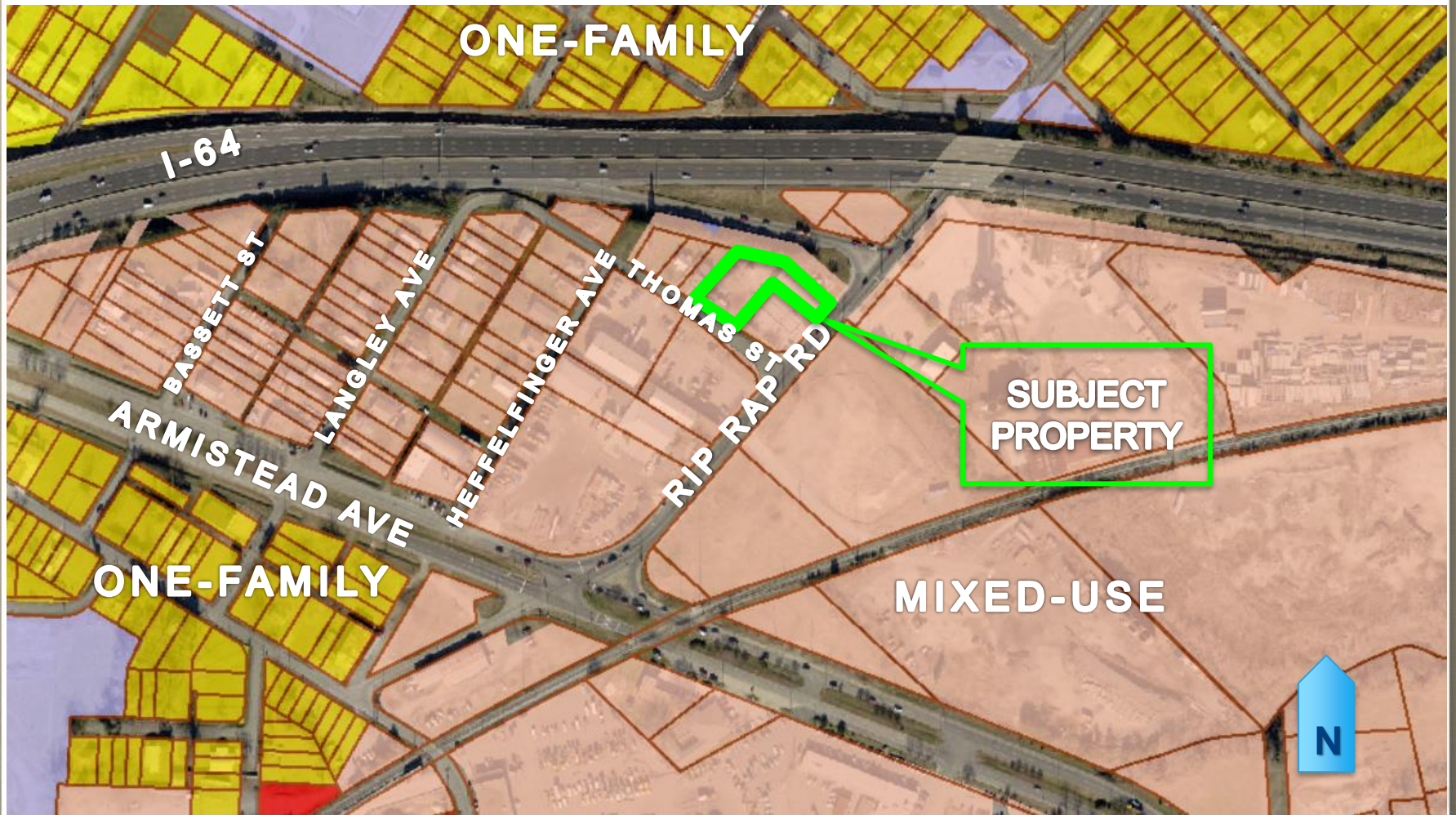
Light green= coverage gap



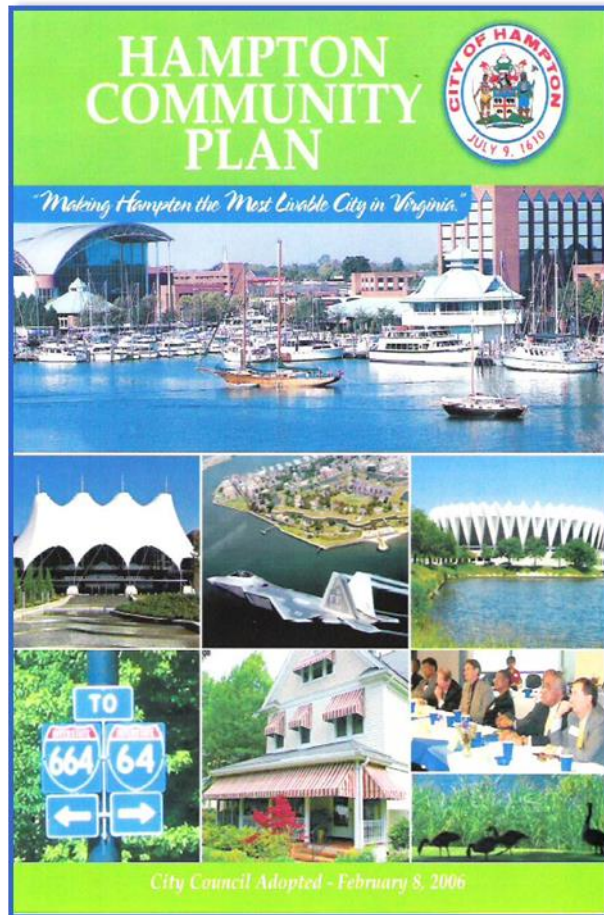
Zoning



Future Land Use Plan



Public Policy: Hampton Community Plan



- Encourage the location of new communication towers at preferred sites through implementation of the standards & procedures

Hampton Community Plan (2006, as amended)

Public Policy: Hampton Community Plan

- 
- 1) **Co-locations on existing towers**
 - 2) Tall buildings & structures
 - 3) Large industrial & parks
 - 4) Approved school properties
 - 5) Commercial areas
 - 6) High density residential areas
 - 7) Parks
 - 8) Scenic views; waterfront

Public Policy: Hampton Community Plan

Tower – Eaton Street



Public Policy: Hampton Community Plan

Tower - Super 8 Motel

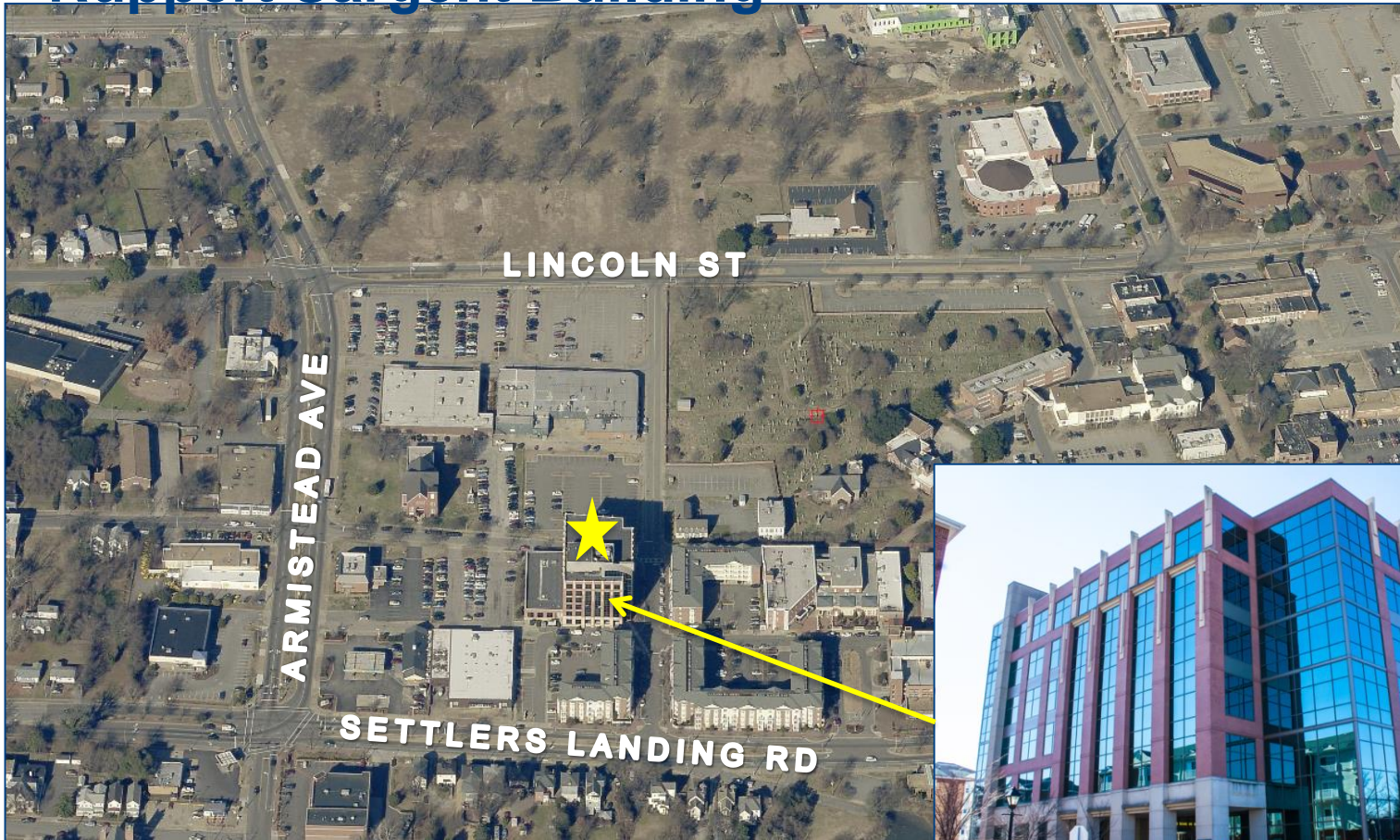


Public Policy: Hampton Community Plan

- 
- 1) Co-locations on existing towers
 - 2) Tall buildings & structures**
 - 3) Large industrial & parks
 - 4) Approved school properties
 - 5) Commercial areas
 - 6) High density residential areas
 - 7) Parks
 - 8) Scenic views; waterfront

Public Policy: Hampton Community Plan

Ruppert Sargent Building



Public Policy: Hampton Community Plan

Billboard adjacent to I-64



Public Policy: Hampton Community Plan

- 
- 1) Co-locations on existing towers
 - 2) Tall buildings & structures
 - 3) Large industrial sites & parks***
 - 4) Approved school properties
 - 5) Commercial areas
 - 6) High density residential areas
 - 7) Parks
 - 8) Scenic views; waterfront

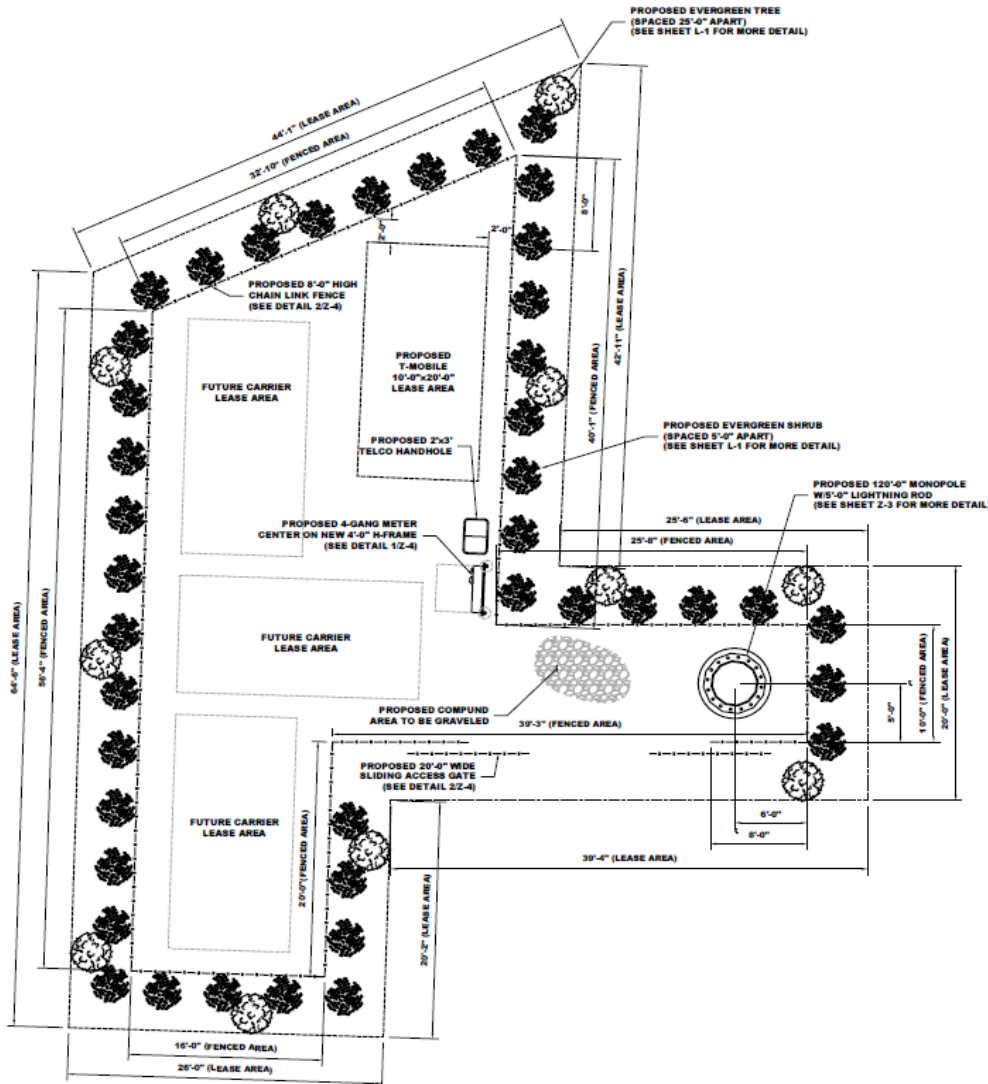
Public Policy: Hampton Community Plan

- 
- 1) Co-locations on existing towers
 - 2) Tall buildings & structures
 - 3) Large industrial sites & parks
 - 4) Approved school properties**
 - 5) Commercial areas
 - 6) High density residential areas
 - 7) Parks
 - 8) Scenic views; waterfront

Public Policy: Hampton Community Plan

- 
- 1) Co-locations on existing towers
 - 2) Tall buildings & structures
 - 3) Large industrial sites & parks
 - 4) Approved school properties
 - 5) Commercial areas**
 - 6) High density residential areas**
 - 7) Parks**
 - 8) Scenic views; waterfront**

Conditions



- Location
- Site Plan
- At least 3 carriers
- Landscape plan
- Minimum 8' fence
- Nullification
- Revocation

Community Meeting

DECEMBER 2017

SUN	MON	TUE	WED	THU	FRI	SAT
					1	2
3	4	5	6	 7	8	9
10	11	12	13	14	15	16
17	18	19	20	21	22	23
24	25	26	27	28	29	30
31						

Recommendation

Staff recommends approval of
Use Permit Application #17-00014
with 11 conditions

Planning Commission recommends approval of
Use Permit Application #17-00014
with 11 conditions