

PORTACOUNT® PRO+ RESPIRATOR FIT TESTER MODEL 8038

RESPIRATOR FIT TESTING
YOU CAN TRUST

No other fit tester can quantitatively fit test all types of respirators—gas masks, SCBAs, respirators, even N95 disposable (filtering-facepiece) respirators. The PortaCount® Pro+ Model 8038 Respirator Fit Tester eliminates the guesswork associated with tedious and error-prone qualitative fit test methods. If the mask requires fit testing, count on the PortaCount Pro+ fit tester to provide the fastest, easiest and best OSHA-accepted fit test method.



PortaCount Pro+ Respirator Fit Tester Kit Includes

- + Carrying case
- + AC adapter
- + Alcohol supply (enough for ~240 hours of operation)
- + FitPro+™ Fit Test Software on CD
- + USB computer interface cable
- + Particle Generator (shipped separately)
- + Operation and service manual

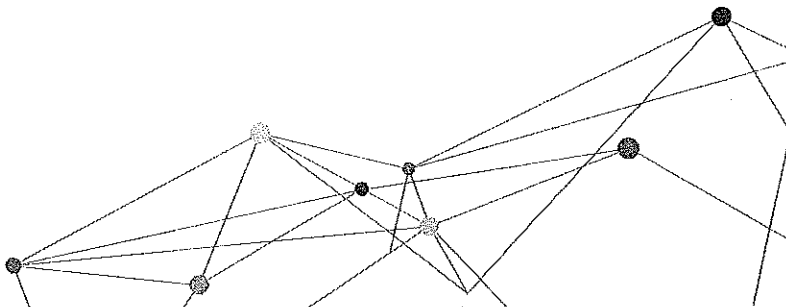
For additional software information, see the TSI FitPro+ Fit Test Software Specification Sheet.

Features and Benefits

- + Greater simplicity with the built-in N95-Companion™ technology
- + Stand-alone operation—no external computer required
- + Reduces need for an external particle generator
 - Redesigned DMA for enhanced performance
 - Ability to perform N95 fit testing with much lower ambient particle concentrations
- + Color touch screen
- + OSHA-compliant for all respirators, including N95
- + Measures fit factors greater than 10,000
- + Switch between different respirator types in under a minute
- + Automates fit testing with FitPro+ Fit Test software
- + Software prints fit test cards with fit test report or on ID cards



UNDERSTANDING, ACCELERATED



SPECIFICATIONS

PORTACOUNT® PRO+ RESPIRATOR FIT TESTER MODEL 8038

Fit Factor Range

1 to greater than 10,000, 1 to 200 for N95 masks

Typical Fit Factor Accuracy

±10% of reading

Respirator Facepieces that can be Fit Tested

Full-face elastomeric
Half-face elastomeric
NIOSH series-100 filtering-facepiece
NIOSH series-99 filtering-facepiece
NIOSH series-95 filtering-facepiece

Fit Factor Measurement

Direct measurement of fit factor (C_{out}/C_{in})*

Dimensions

6.75 in. x 8.5 in. x 9.5 in. (17 cm x 22 cm x 24 cm)

Weight

Unit Only	6.8 lb (3.1 kg)
With Standard	
Accessories and Case	18 lb. (8.2 kg)

Power

Autosensing 100 to 250 VAC, 50 to 60 Hz

Flow Rate

Sample	350 cm ³ /min
Total	1000 cm ³ /min (nominal)

Temperature Range

Operation	32 to 100°F (0 to 38°C)
Storage	-40 to 160°F (-40 to 70°C)

Alcohol

Hours Per Charge	6 hours at 70°F (21°C)
Alcohol Type	99.5%+ reagent grade isopropyl

Carrying Case

Dimensions (HWD)	9 in. x 13.7 in. x 19.5 in. (23 cm x 34.8 cm x 49.5 cm)
------------------	--

Pass/Fail Setting

User-selectable: 0 to 10,000

Factory Recalibration Interval

One year

Warranty

Two years on workmanship and materials

Minimum PC Hardware Requirements for FitPro+ Fit Test Software

Windows® XP, Windows 7 (32 and 64 bit), or Windows 8 (32 and 64 bit) operating system
Microsoft.Net version 4 (installation software will install Microsoft.Net if necessary) Note – An internet connection is required to install Microsoft.Net
≥ 1 GHz process
≥ 12080 x 800 screen resolution monitor
500 MB free space on hard drive
1 free USB port
CD-ROM reader or internet connection (to install the software)

Optional Accessories

Mask Sampling Adapters for select respirator models

*Mask leakage is measured simultaneously while test subject moves and breathes.

Model 8038 PortaCount® Pro+ Respirator Fit Tester is patented under U.S. Patent No. 6,125,845.

PortaCount, TSI, and the TSI logo are registered trademarks, and FitPro+, and N95-Companion are trademarks of TSI Incorporated.

Windows is a registered trademark of Microsoft Corporation in the United States and/or other countries.



UNDERSTANDING, ACCELERATED

TSI Incorporated - Visit our website www.tsi.com for more information.

USA	Tel: +1 800 874 2811	India	Tel: +91 80 67877200
UK	Tel: +44 149 4 459200	China	Tel: +86 10 8219 7688
France	Tel: +33 4 91 11 87 64	Singapore	Tel: +65 6595 6388
Germany	Tel: +49 241 523030		



500 Cardigan Road
Shoreview, MN 55126
USA
EIN 41-0843524

Tel:(651)490-2811
Fax:(651)490-3824
Web:www.TSI.com
Email:answers@TSI.com

Quotation

Manufacturer of TSI®, Alnor®, Airflow™, and ChemLogix™ branded products

To
Hampton Division of Fire & Rescue
22 Lincoln St
Hampton, VA 23669-3522
USA

Contact Information
David Layman
Tel: 757-727-6580 Fax: 757-727-6094
Email: dlayman@hampton.gov

Quotation Number 20074754
Quotation Date 12/08/2015
Customer No 5384655
Cust. Ref. David Layman
Incoterms 2010 CPT: Prepay & Add
Consignee's Premises
Payment Term SUBJECT TO CREDIT APPROVAL
Valid To 12/31/2015
Currency USD
Method of Payment PO, Visa, Amex, Mastercard
Make PO Out To TSI Inc.
Reference Quote number when submitting PO

Item	Material/Description	Quantity	Unit Price	Amount
1	8038 PortaCount Pro+ Respirator Fit Tester Includes: PortaCount Pro+, AC adapter with Universal Plug Set, 8026 Particle Generator (115 VAC), Alcohol cartridge, Alcohol fill capsule, Storage cap, (2) zero check filters, Model 8016 alcohol supplies, 3/16" and 1/4" hose adapters, (2) spare alcohol wicks, 100 sampling probes and probe insertion tool, Neck strap, Carrying case, USB cable, CD including FitPro+ Fit Test software and operation & service manual, Flash Memory Drive (1GB) and 2-year warranty.	1.00 EA	12,810.00	12,810.00
2	8025-N95R Fit Test Probe Refill Kit for 8025-N95 Refill Kit for 8025-N95 Sampling Probe Kit For fit testing disposable filtering-facepiece respirators. Includes: 500 Probes, 500 Push Nuts (no tools).	2.00 EA	130.00	260.00

Sub Total 13,070.00
Tax EXEMPT 784.20
Total Amount 13,854.20

These commodities, technology or software are controlled under the Export Administration Regulations. If the goods are exported or reexported, it must be in accordance with the Export Administration Regulations. Diversion contrary to U.S. law is prohibited.

This Quotation is subject to the warranties, disclaimers and all other terms and conditions set forth by TSI Inc. and incorporated by reference and to no others. Seller reserves the right to change prices effective on any new orders, provided Seller notifies in writing those with currently valid Quotations prior to any order being placed. This quotation shall become an agreement binding upon the Buyer and Seller when accepted by the Buyer and subsequently accepted by an authorized representative of the Seller at the Seller's home office and thereupon shall constitute the entire agreement between the parties.

TSI Incorporated _____ Date _____

TSI Terms and Conditions apply and are incorporated by reference. See <http://www.tsi.com/tc.pdf>