

# VA70322B - Coverage Prediction

POR Details:

Objective = Capacity

Type = Cell Split

Offload sector(s) = LVA10032A3, LVA10068A1

Site Details:

Hampton/Todd's Lane

1605 Aberdeen Road, Hampton VA 23666

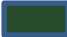



Rad center = 150' RC

Azimuth = (0/140/240)

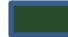



EDT = 2/2/2

Config = 797DB



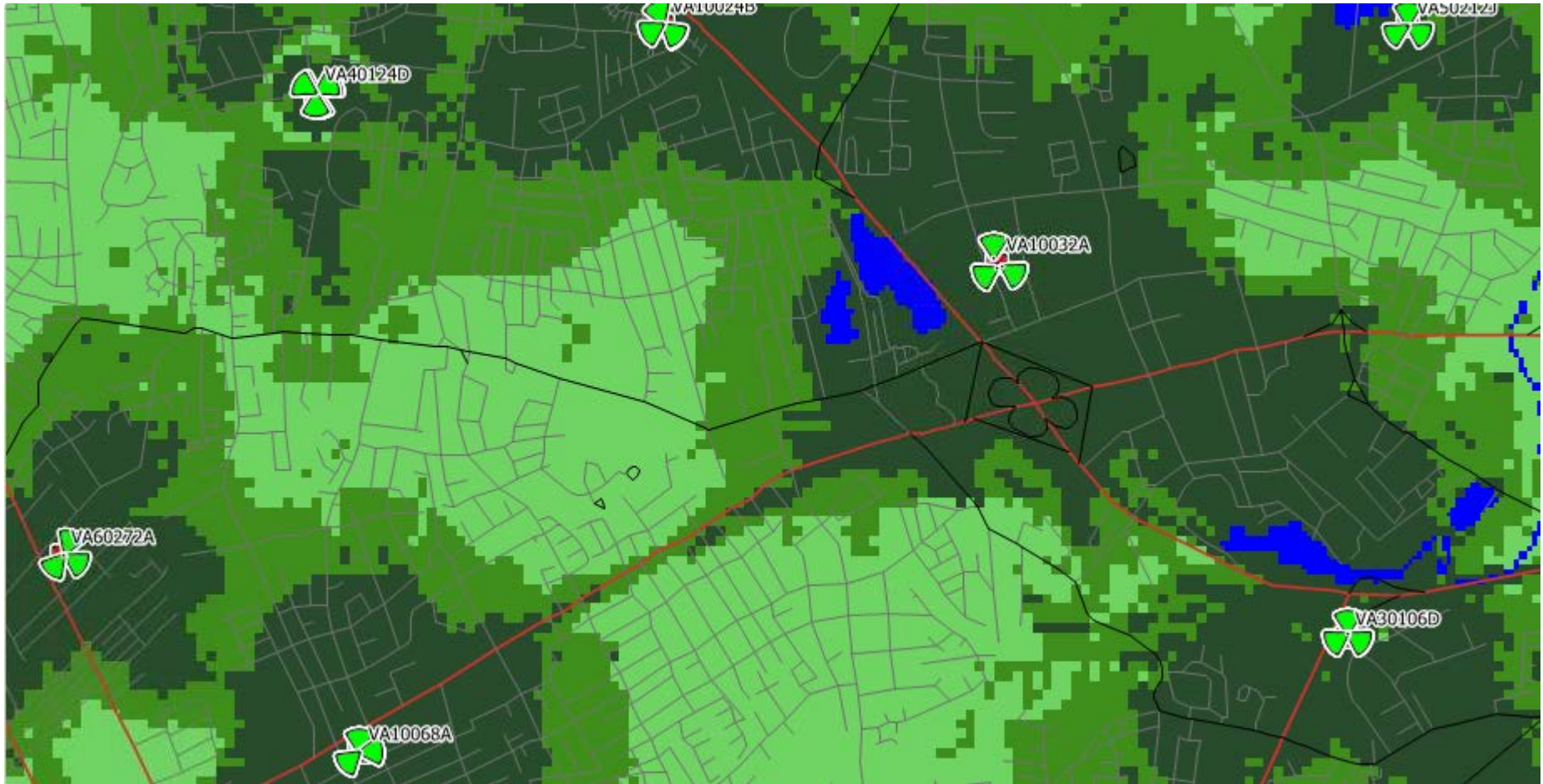
	>= -91 dBm (in-bldg commercial)
	>= -97 dBm (in-bldg residential)
	>= -114 dBm (in-vehicle)
	>= -120 dBm (outdoor)

**L21/L19 Policy 4.2**

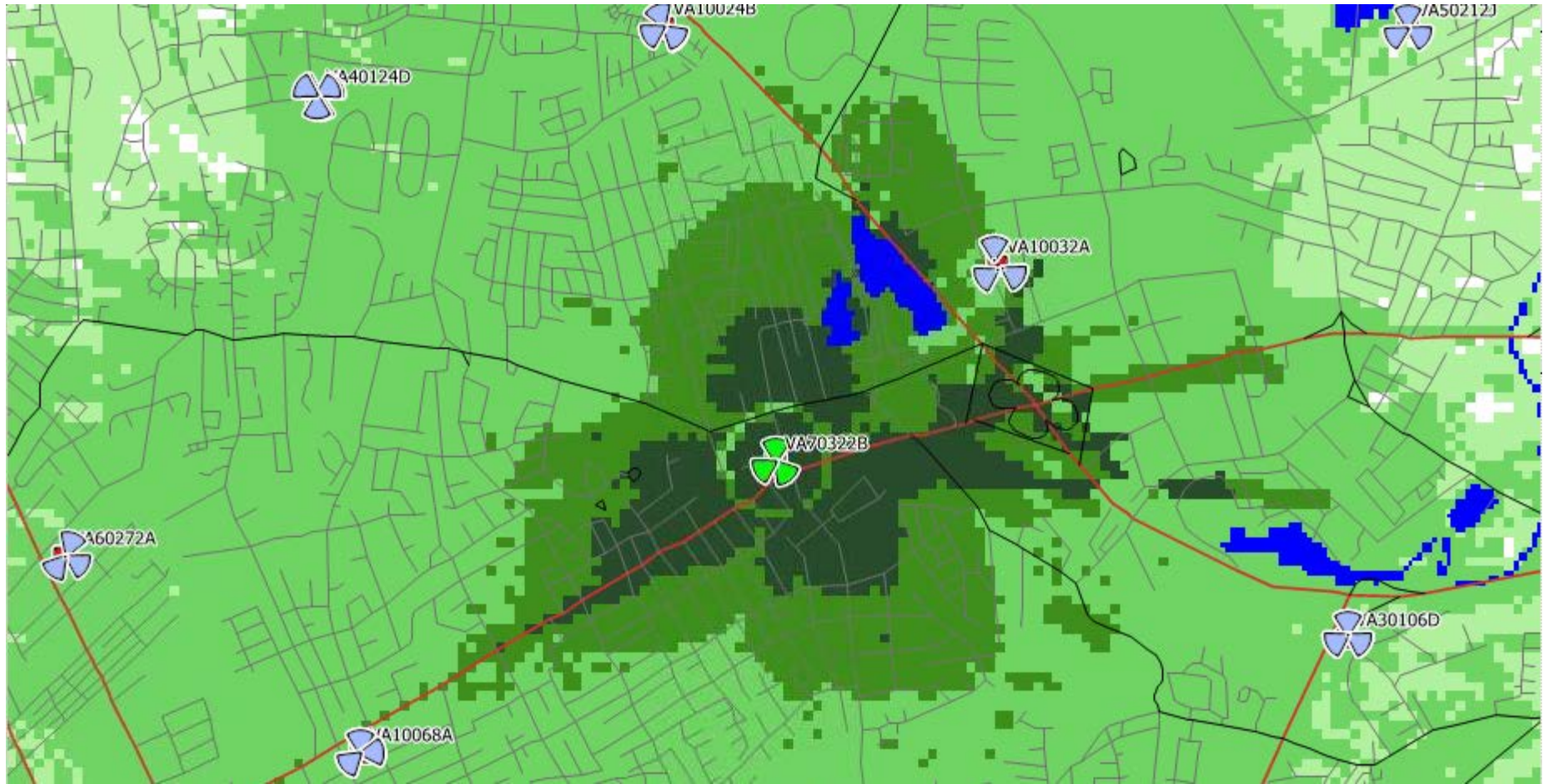
	>= -88 dBm (in-bldg commercial)
	>= -97 dBm (in-bldg residential)
	>= -112 dBm (in-vehicle)
	>= -118 dBm (outdoor)

**L700 Policy 4.2**

# Existing L21 coverage



# VA70322B only coverage (Parallel)





## L21 coverage with VA70322B (Parallel)

