

Use Permit # 16-00005

By Bethel Child Development
1705 Todds Lane



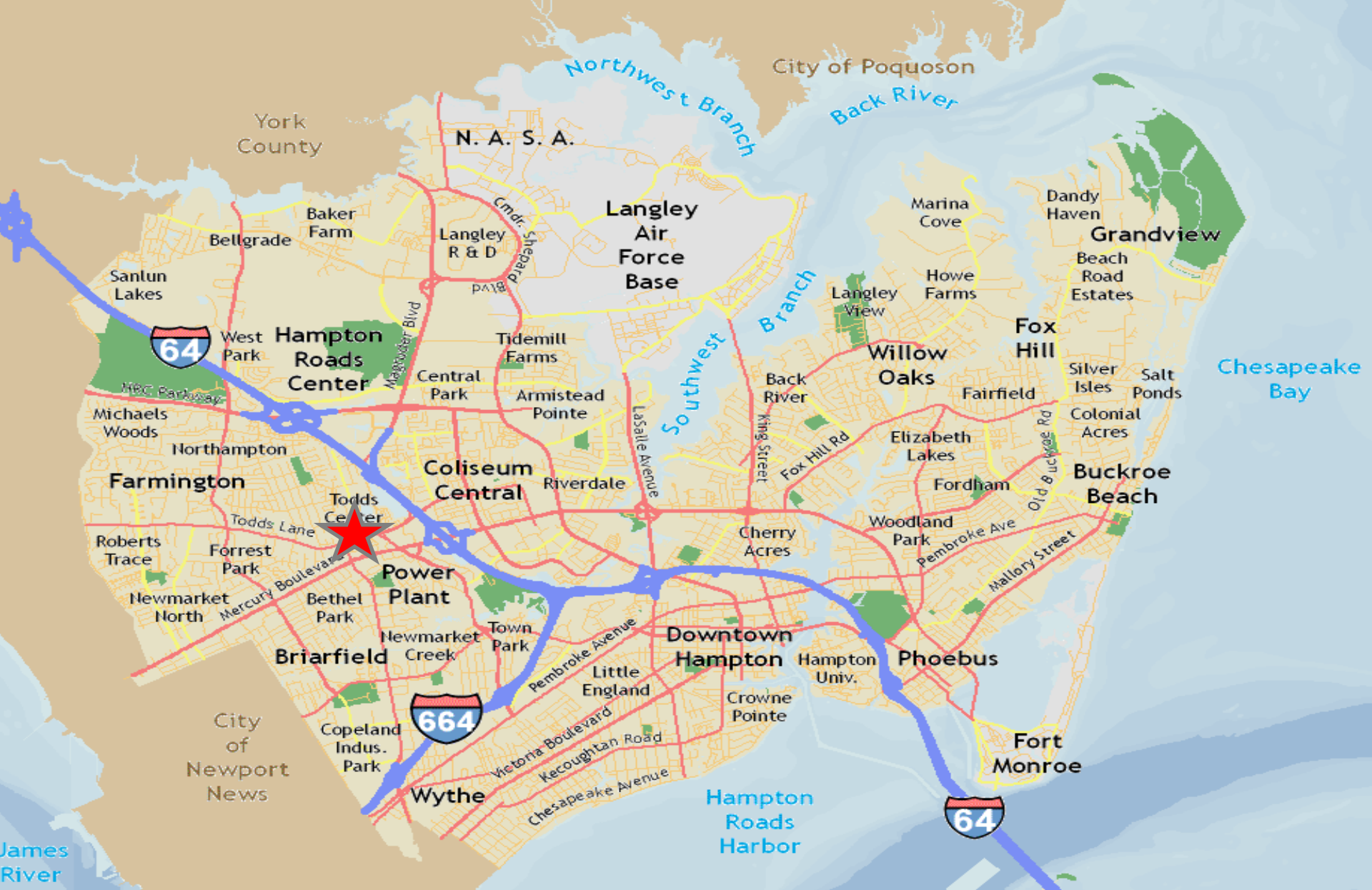
Hampton
VIRGINIA

Hampton City Council

September 14, 2016

Application

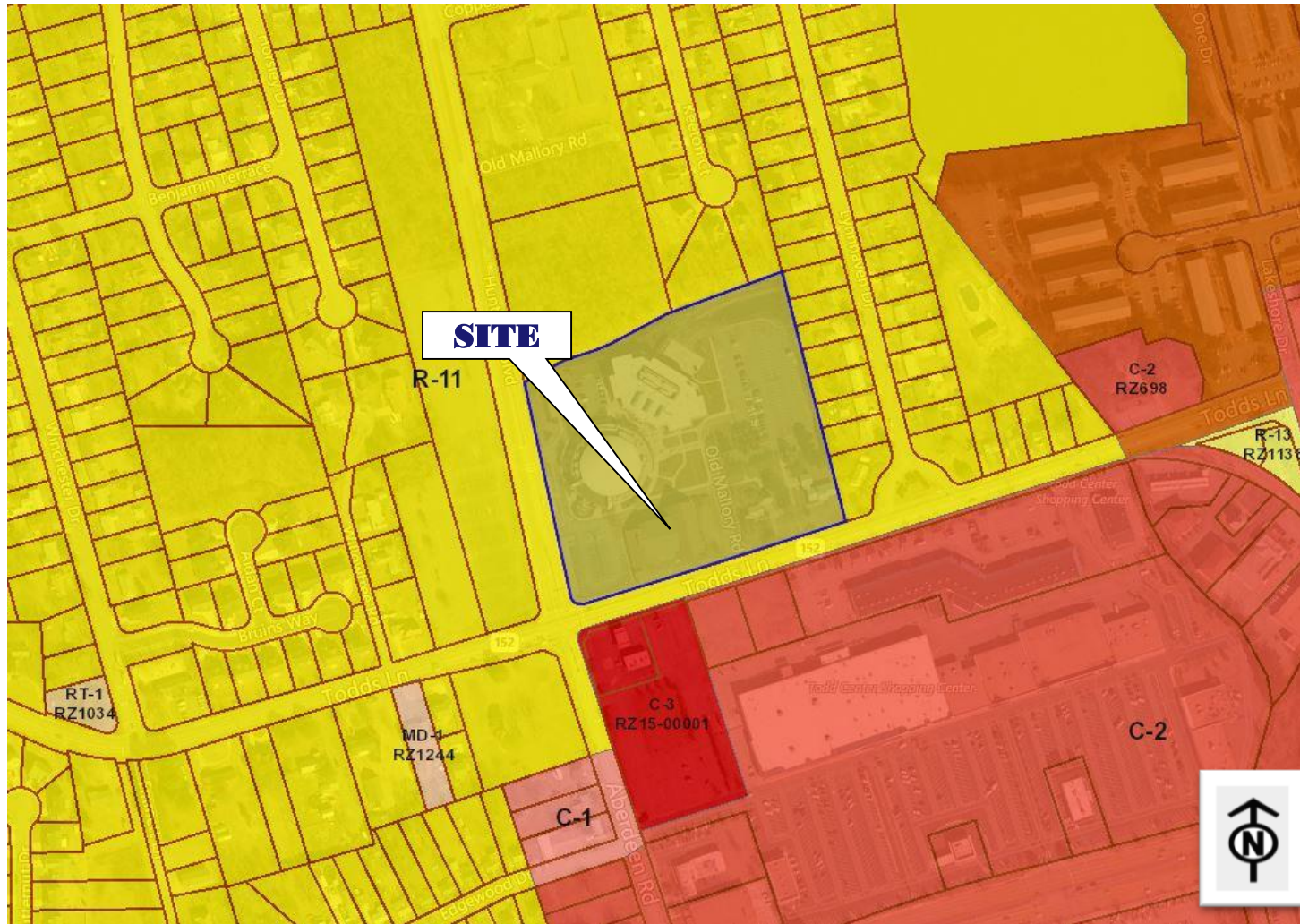
Use permit for the operation of a
commercial day care



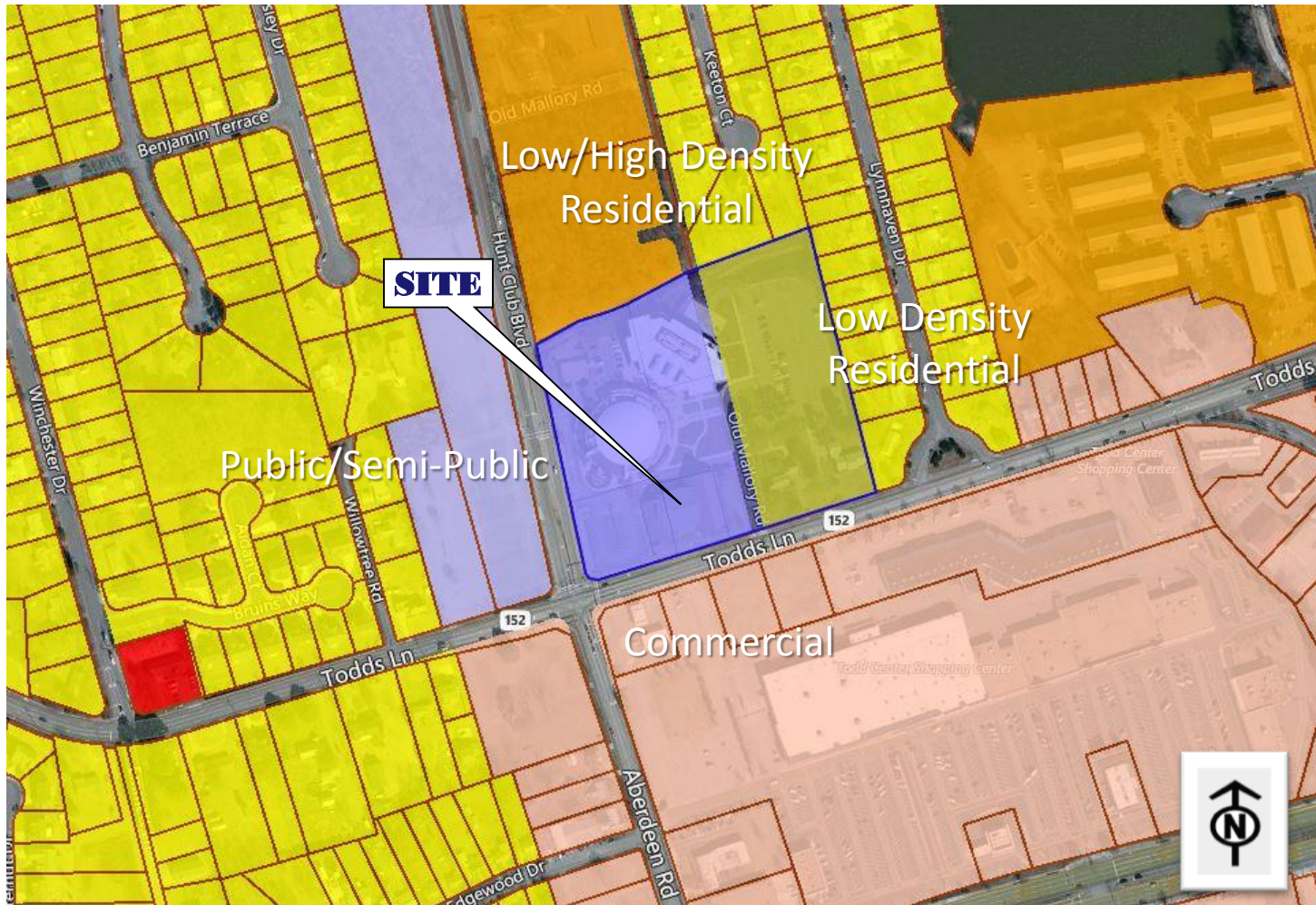
Site Location



Zoning



Land Use

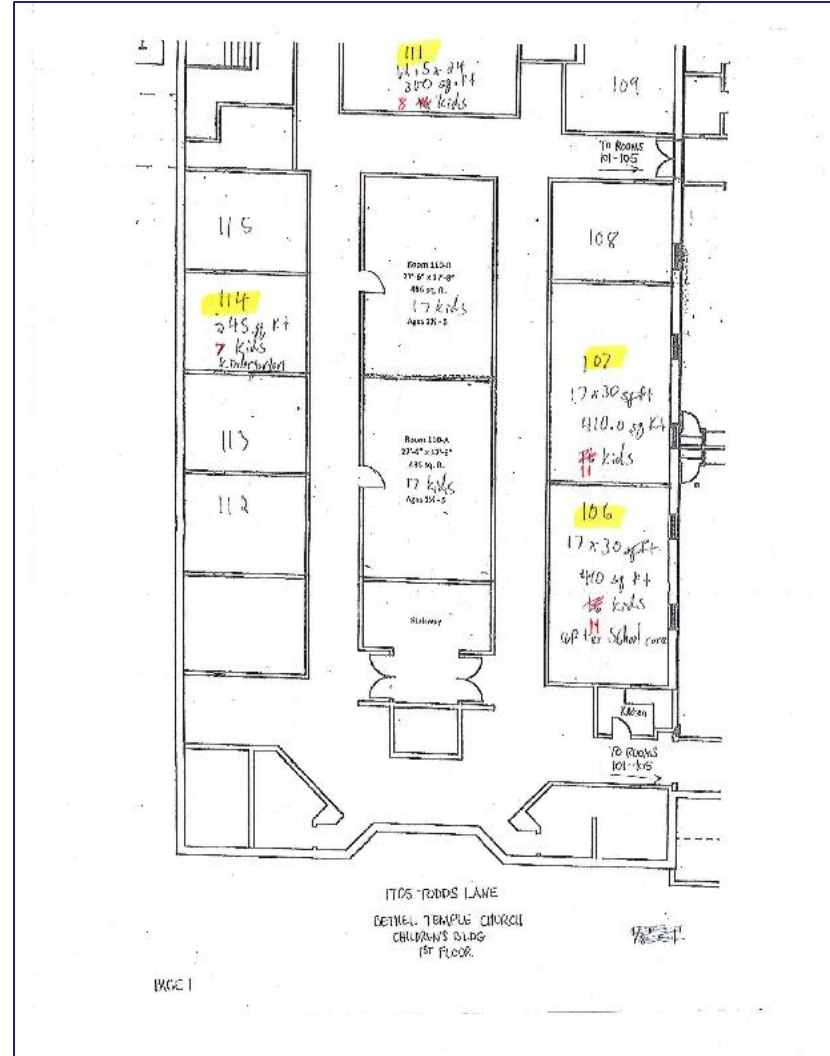


Proposal

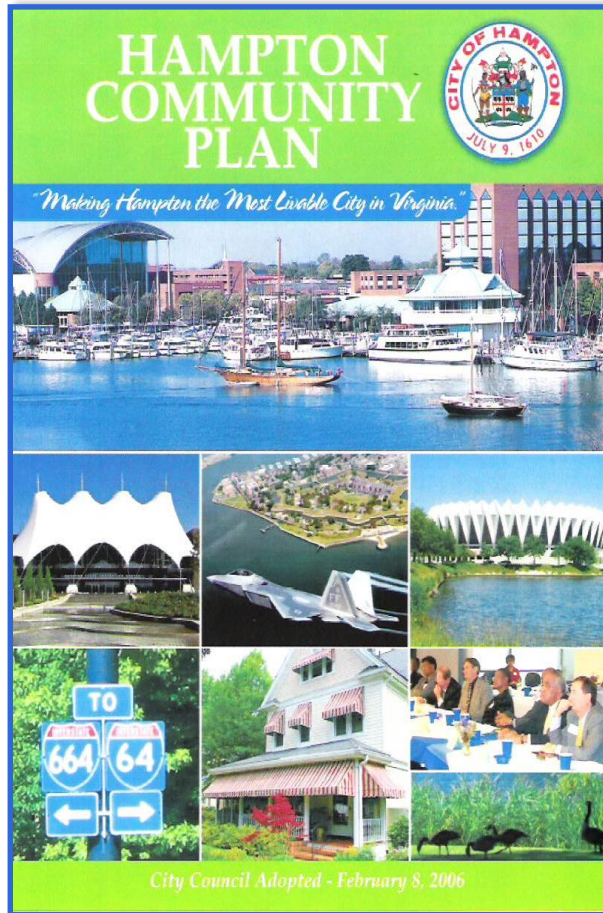
Increase from
100 to 124 kids

Monday-
Friday

Ages 0-12



Public Policy



“Hampton’s children and youth will thrive and succeed in a caring community”

- ✦ Facilitate greater participation in the workforce by promoting quality daycare services, flexible job schedules, job sharing, home occupations, increased accessibility of jobs, and other creative solutions.
- ✦ Promote access to educational, social, civic, recreational, and employment opportunities particularly for youth and seniors

Hampton Community Plan (2006, as amended).

Conditions

- ✦ Traffic
- ✦ Capacity
- ✦ Nullification
- ✦ Revocation

Recommendation

Approval of
Use Permit # 16-00005 with 10 conditions