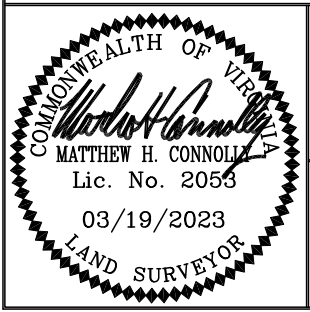
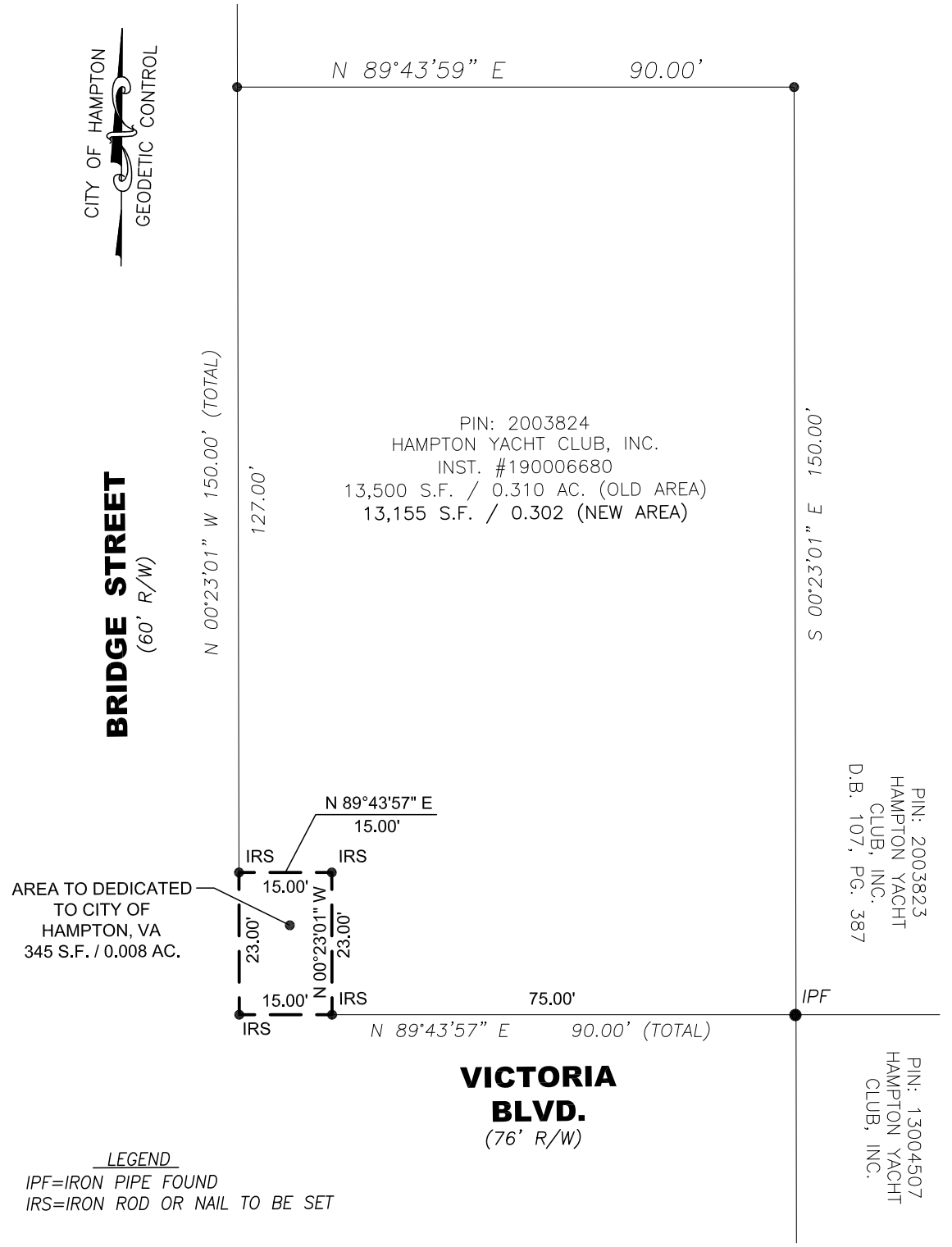


NOTES:

1. THIS PLAT IS BASED ON A FIELD SURVEY COMPLETED JANUARY, 2015.
2. THIS PLAT WAS PRODUCED WITHOUT THE BENEFIT OF A TITLE REPORT AND MAY NOT REFLECT ALL ENCUMBRANCES, EASEMENTS AND SETBACKS THAT AFFECT THE SUBJECT PROPERTY.



SHEET 1 OF 1

DATE: 03/19/23
SCALE: 1"=20'
JOB# 14-267
CAD File
EXHIBIT.dwg

PLAT OF A R/W DEDICATION LOCATED AT
4701 VICTORIA BLVD., HAMPTON VA TO THE
CITY OF HAMPTON, VA
BY
HAMPTON YACHT CLUB INC.
CITY OF HAMPTON VIRGINIA

LandTech Resources, Inc.
Engineering & Surveying Consultants
205 Bulifants Blvd., Suite E, Williamsburg, Virginia 23188
Telephone: 757-565-1677 Fax: 757-565-0782
Web: landtechresources.com