

[illegible]

SITE

WOODLAND RD



Land Use Plan

Hampton's Community Plan Land Use Section

Features

- Rural Density Residential
- Low Density Residential
- Medium Density Residential
- High Density Residential
- Business/Industrial
- Commercial
- Military
- Mixed-Use
- Open Space
- Public/Semipublic
- Historic Village: Mixed Use
- North Gate: Mixed Use
- Inner Fort: Mixed Use
- Wherry Quarter: Mixed Use

Data Sources:
City Assessor's Data Files
Parcel File
Land Use Map Classifications, Planning Department



City of Hampton
Planning Department
Sept 2017

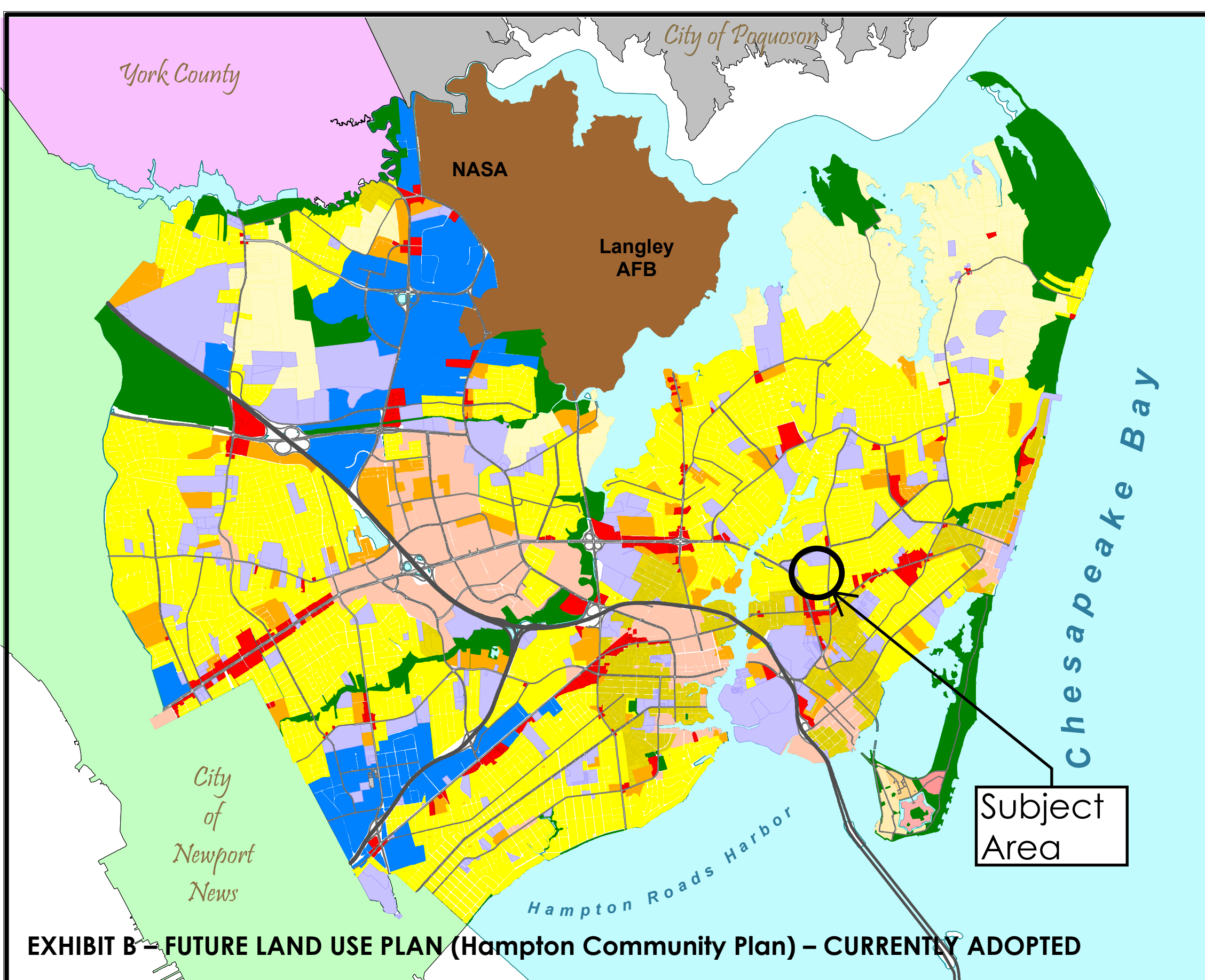


EXHIBIT B - FUTURE LAND USE PLAN (Hampton Community Plan) - CURRENTLY ADOPTED

Land Use Plan

Hampton's Community Plan Land Use Section

Features

- Rural Density Residential
- Low Density Residential
- Medium Density Residential
- High Density Residential
- Business/Industrial
- Commercial
- Military
- Mixed-Use
- Open Space
- Public/Semipublic
- Historic Village: Mixed Use
- North Gate: Mixed Use
- Inner Fort: Mixed Use
- Wherry Quarter: Mixed Use

Data Sources:
City Assessor's Data Files
Parcel File
Land Use Map Classifications, Planning Department



City of Hampton
Planning Department
March 2025

EXHIBIT C – FUTURE LAND USE PLAN (Hampton Community Plan) – PROPOSED AMENDMENT

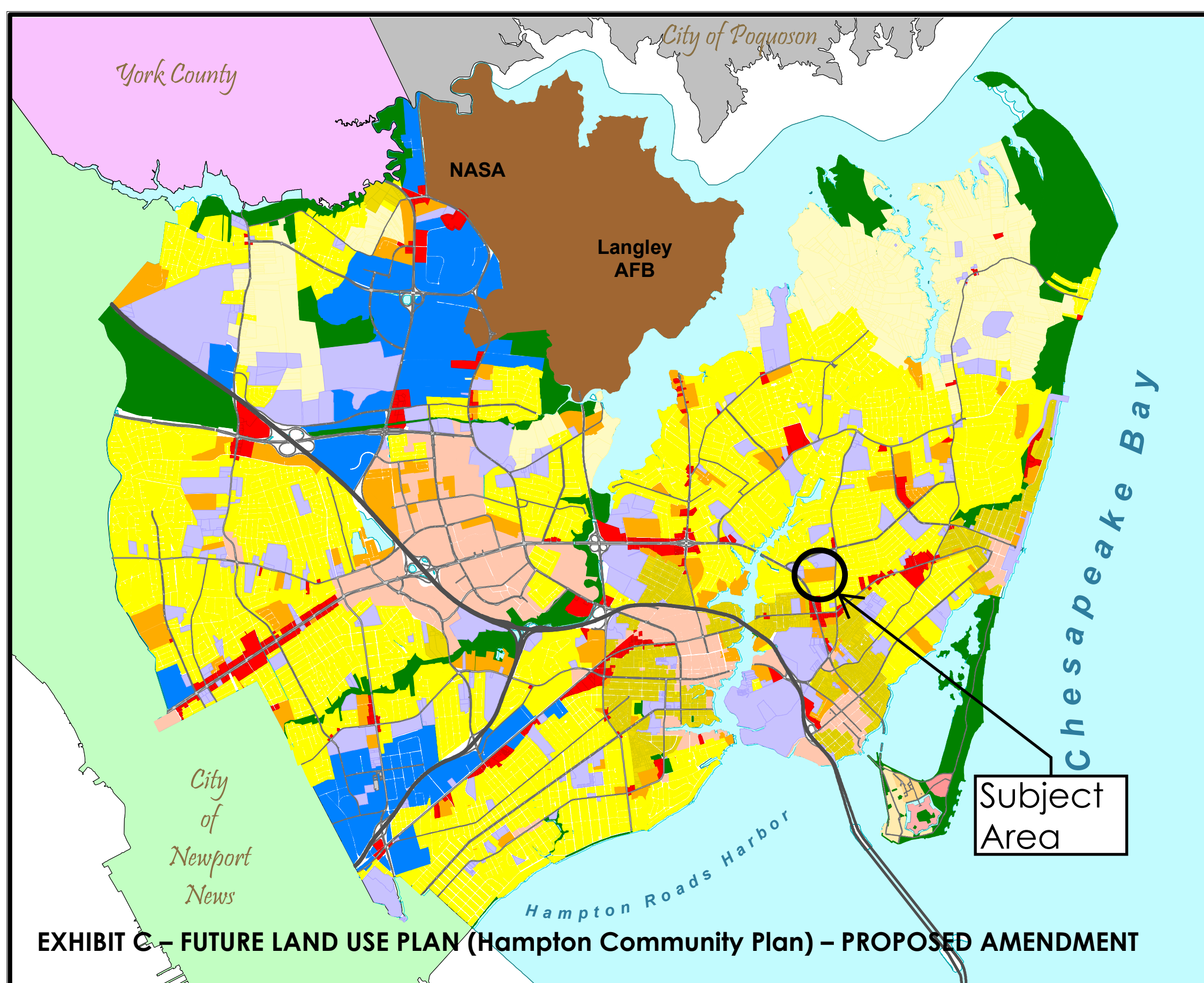


EXHIBIT D - CURRENT FUTURE LAND USE OF SUBJECT PROPERTY

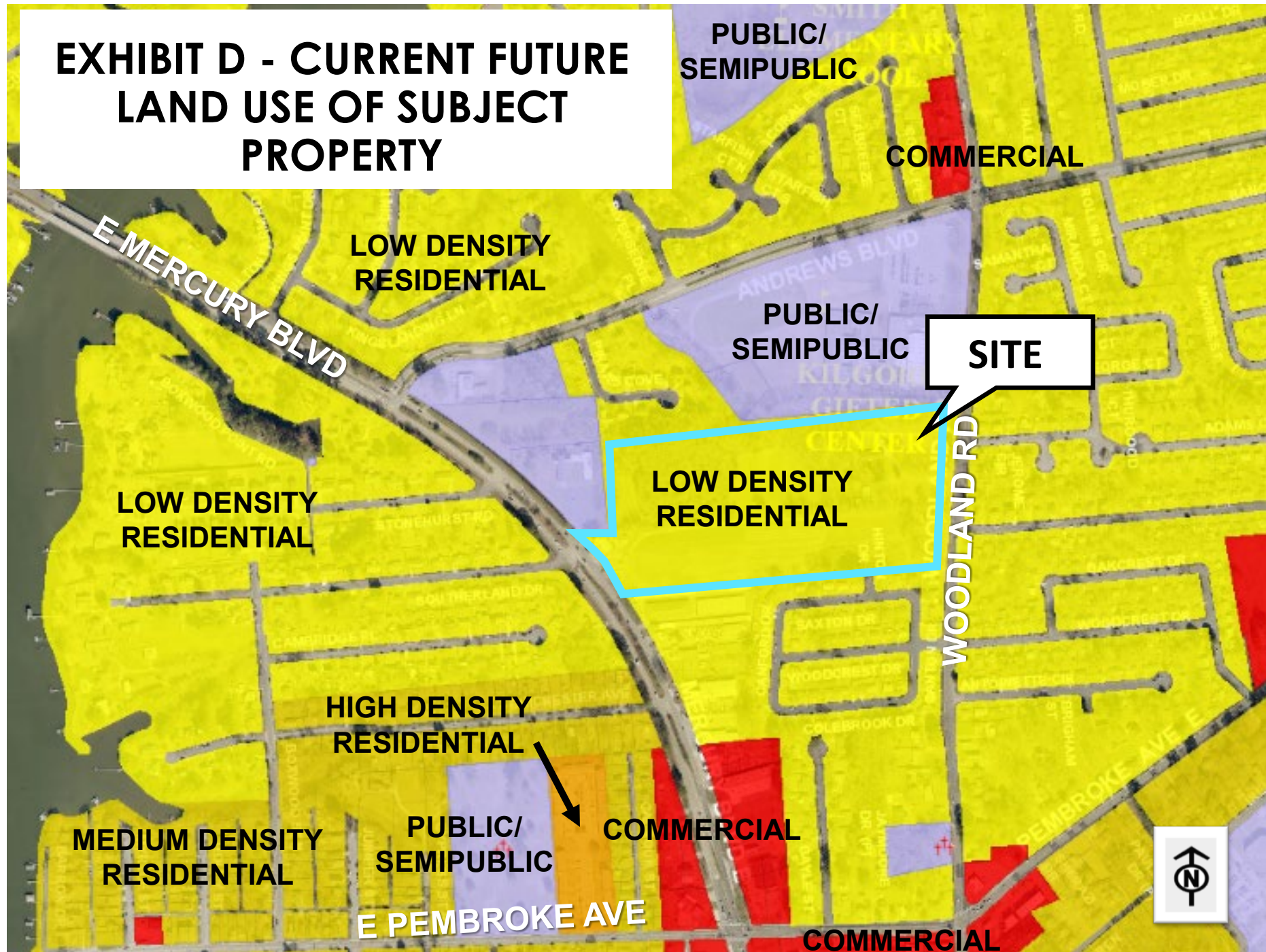


EXHIBIT E - RECOMMENDED FUTURE LAND USE OF SUBJECT PROPERTY

