

Plat Showing Boundary Survey
"Shelton on the Bay"
Parcel Owned by
AH&H Corp.
LRSN 12005714
City of Hampton, Virginia

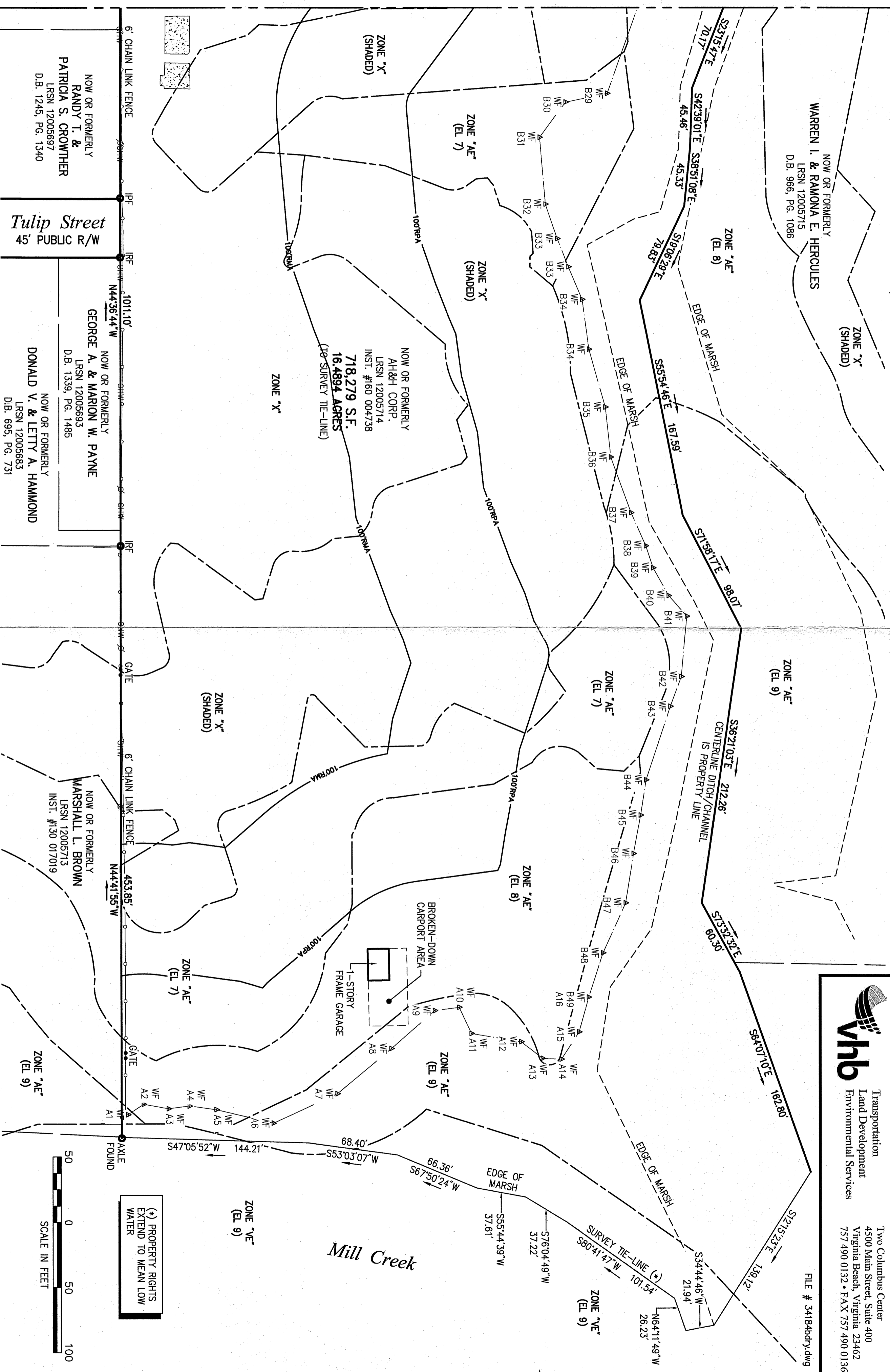
| | | |
|----------------------|---------------|-----------------|
| DATE: 10/24/16 | SHEET 2 OF 2 | SCALE: 1"=50' |
| PROJECT NO: 34184.00 | DRAWN BY: DWP | CHECKED BY: DWA |

whb Transportation
Land Development
Environmental Services

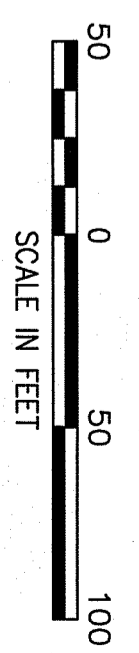
Two Columbus Center
4500 Main Street, Suite 400
Virginia Beach, Virginia 23462
757 490 0132 • FAX 757 490 0136

FILE # 34184bdr.dwg

MATCHLINE - SEE SHEET 1



(*) PROPERTY RIGHTS EXTEND TO MEAN LOW WATER



NOW OR FORMERLY
RANDY T. &
PATRICIA S. CROWTHER
LRSN 12005697
D.B. 1245, PG. 1340

Tulip Street
45' PUBLIC R/W

NOW OR FORMERLY
GEORGE A. & MARION W. PAYNE
LRSN 12005693
D.B. 1339, PG. 1485

NOW OR FORMERLY
DONALD V. & LETTY A. HAMMOND
LRSN 12005683
D.B. 695, PG. 731

NOW OR FORMERLY
AH&H CORP.
LRSN 12005714
INST. #160 004738

718,279 S.F.
16,489.4 ACRES
(100% SURVEY TIE-LINE)

NOW OR FORMERLY
MARSHALL L. BROWN
LRSN 12005713
INST. #130 017019

Mill Creek