

## City of Hampton Publically Owned Stormwater Management Facilities Safety Guidelines

Pond safety is an important community concern, since both young children and adults have perished by drowning in wet ponds through a variety of accidents. The most effective safety measures are to provide gentle side slopes, safety benches, and aquatic benches as described below. By providing these, potentially dangerous drop-offs can be avoided.

- A Safety Bench is a flat bench located just outside of the perimeter of the permanent pool to allow for maintenance access and reduce safety risks. Except when the stormwater pond side slopes are 5H:1V or flatter, a safety bench should be provided that extends 8 to 15 feet outward from the normal water edge to the toe of the stormwater pond side slope. The maximum slope of the safety bench is 5%.
- An Aquatic Bench is a shallow area just inside the perimeter of the normal pool that promotes growth of aquatic and wetland plants. The bench also serves as a safety feature, reduces shoreline erosion, and conceals floatable trash. An aquatic bench should be provided that extends up to 10 feet inward from the normal shoreline, has an irregular configuration, and extends a maximum depth of 18 inches below the normal pool water surface elevation.

Figure 1 shows a typical wet pond section with the safety bench and aquatic bench. Both the safety bench and the aquatic bench should be landscaped with vegetation that hinders or prevents access to the pool.

Fencing of stormwater management basins may occasionally be needed and should be used when:

- The basin is deep with a ponded depth greater than about 3' and/or has steep side slopes and is unable to provide the safety and aquatic benches because of design constraints.
- The basin is in close proximity to schools, playgrounds or similar areas where children may be expected to frequent
- It is recommended by the project engineer and reviewed by the project manager.

When fencing is used, it shall have a minimum height of 4 feet, with a maximum height of 6 feet. Lockable gates shall be provided that are sufficient width to meet the needs for maintenance access. Galvanized chain link fencing with a maximum 1 ¼" mesh opening is the typical fence material to be used. When aesthetics are a concern, vinyl coated chain link fence (color to be determined), or black aluminum picket fence may be used. When a picket style

fence is used, the maximum spacing between pickets shall be 4 inches. Examples of the different types of fences are shown in Figures 2, 3, & 4.

“No Trespassing” signs should be considered for use on all basins, whether fenced or unfenced. A typical combined no trespassing and informational sign is shown in Figure 5.

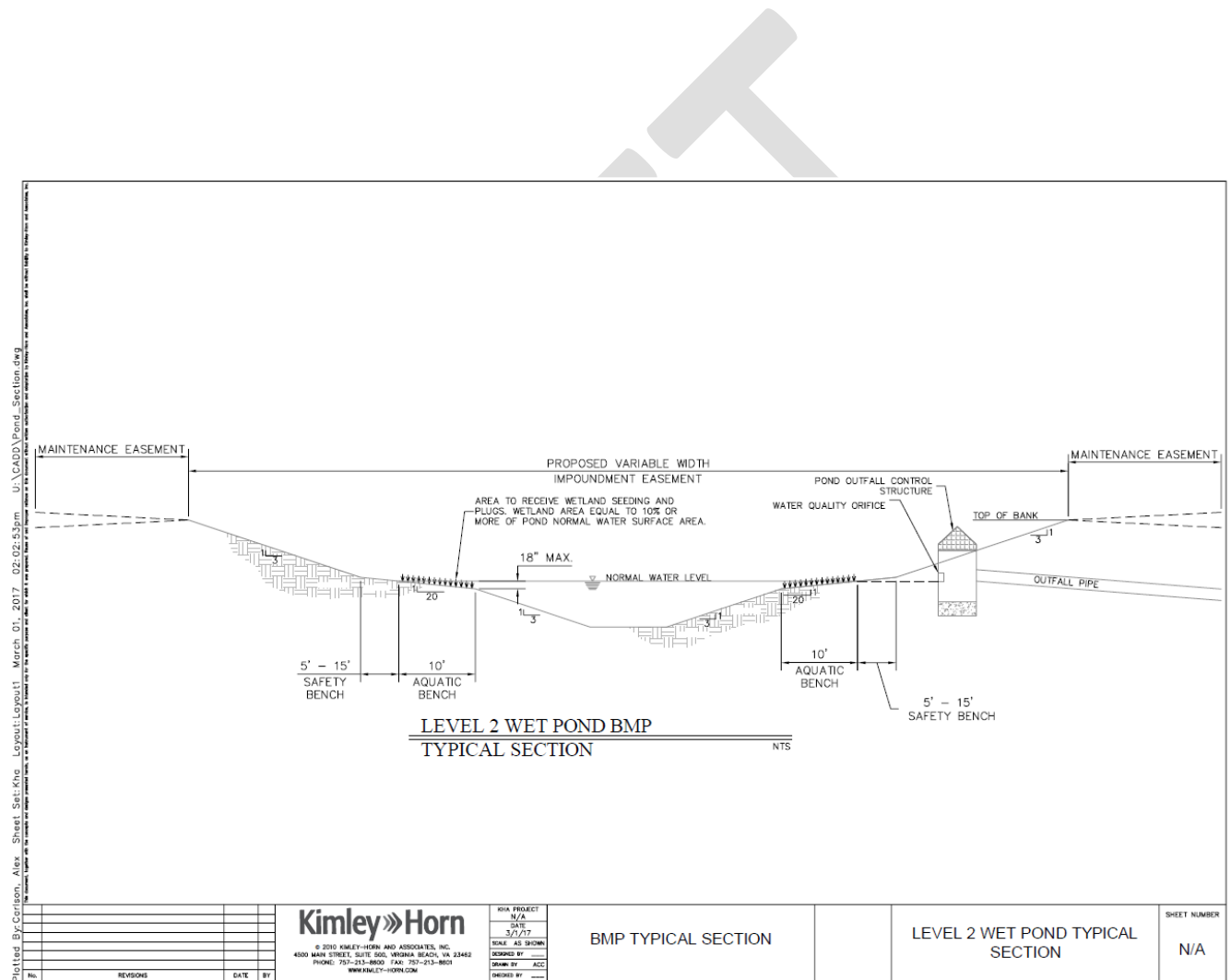


Figure 1



**Figure 2: Galvanized Chain Link Fence**



**Figure 3: Vinyl Coated Chain Link Fence**



Figure 4: Aluminum Picket Fence

**NO TRESPASSING**  
**City of Hampton**  
**Stormwater Management Facility**

This Stormwater Management Facility (SWMF) plays a crucial role in treating stormwater runoff prior to runoff entering the Chesapeake Bay. Please do not enter, pollute, alter or disturb this SWMF in any way. All routine maintenance will be performed by the City or their designee in accordance with City Code § 33.2-7(b)4 and the State Code § 9VAC25-870-58. If you have questions or need to report a problem please contact the Stormwater Operations Manager at 757-727-8311.

**HAMPTON VA**



Figure 5: