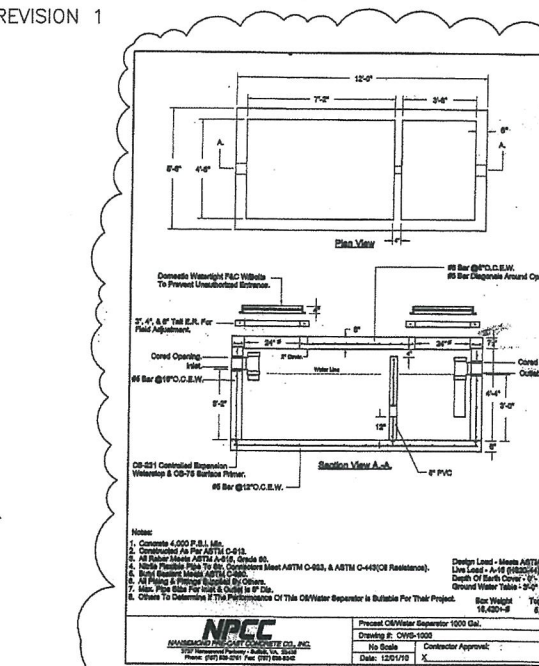


SANITARY STRUCTURE & PIPE SCHEDULE

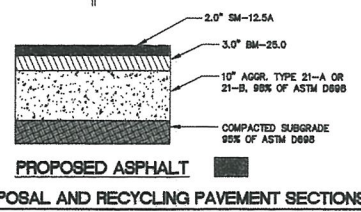
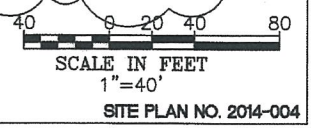
① DROP INLET RM = 14.00 INV = 9.20	⑤ GRINDER PUMP STATION TOP = 14.12 INV IN = 12.37
② TO 170'-1 1/2" PVC FORCE MAIN	⑥ SAN. CLEANOUT RM = 14.30 INV IN = 12.82
③ OIL WATER SEPARATOR RM = 13.80 INV IN = 12.30 INV OUT = 12.47	⑦ TO TIE IN 50'-6" PVC @ 0.65%
④ CLEANOUT RM = 14.50 INV = 12.82	⑧ TO FORCE MAIN TO EXIST LATERAL
⑧ TO 80'-6" PVC @ 0.65%	
⑨ TO 8'-6" PVC @ 0.65%	



REVISION 1 APPROVAL

APPROVED BY DIRECTOR OF PUBLIC WORKS
Ad. [Signature] 12/5/16 DATE

APPROVED BY COMMUNITY DEVELOPMENT DEPARTMENT
[Signature] 12/05/2016 DATE



NOTES:

THIS PLAN DOES NOT GUARANTEE THE LOCATION OF EXISTING UNDERGROUND UTILITIES. CONTRACTOR TO DETERMINE ACTUAL LOCATION AND DEPTH OF ALL UTILITIES PRIOR TO MOBILIZATION. IF CONFLICTS EXIST, NOTIFY ENGINEER.

BEFORE DIGGING CONTACT "MISS UTILITY" AT 811

HORTON & DODD, P.C.
 Surveyors Engineers Planners
 PHONE: (757) 487-4535 FAX: (757) 487-9786
 300 George Washington Highway North Chesapeake, Virginia 23323
 EMAIL: c.miller@hdcpc.net

REVISIONS

DATE	REVISIONS
11-3-16	REV.1 COMMENTS 10-27-16
6-17-15	REVISION 1 COMMENTS
4-15-15	MOVE OIL/WATER AND GRINDER PUMP
3-4-15	REVISION 1 COMMENTS FROM CITY
1-20-15	REVISION 1
10-24-14	BMP

**BUILDING & PARKING LOT ADDITION
 BAY DISPOSAL AND RECYCLING
 310 E STREET
 HAMPTON, VIRGINIA**

**REVISION 1
 OIL-WATER SEPARATOR
 GRINDER PUMP STATION**

FILE NO. 22670
 DATE 4/16/15
 SCALE 1"=40'
 SHEET
C-3.1