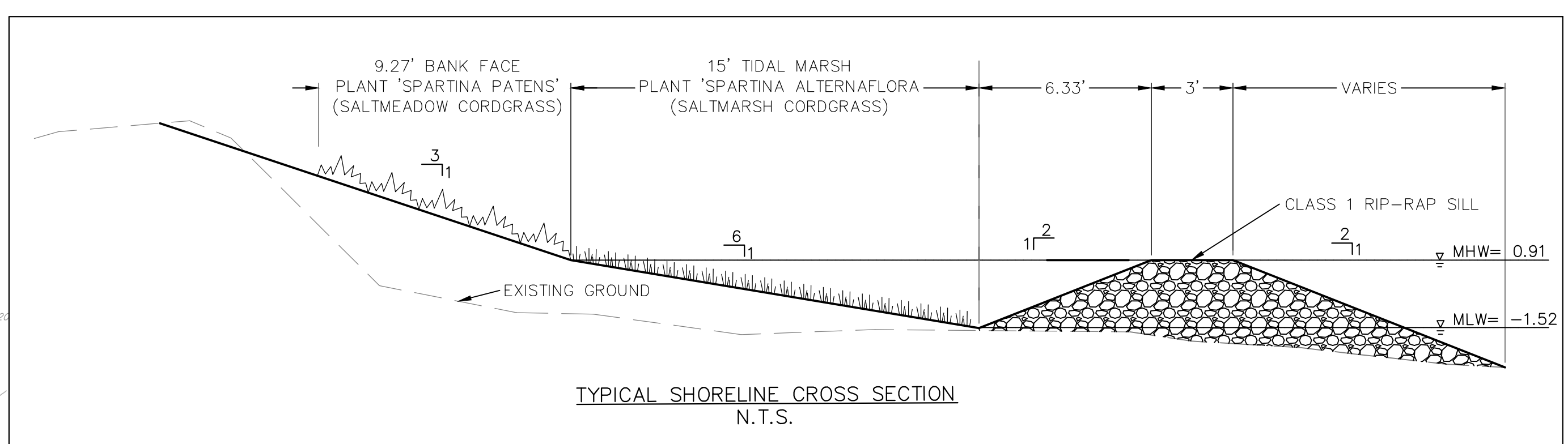
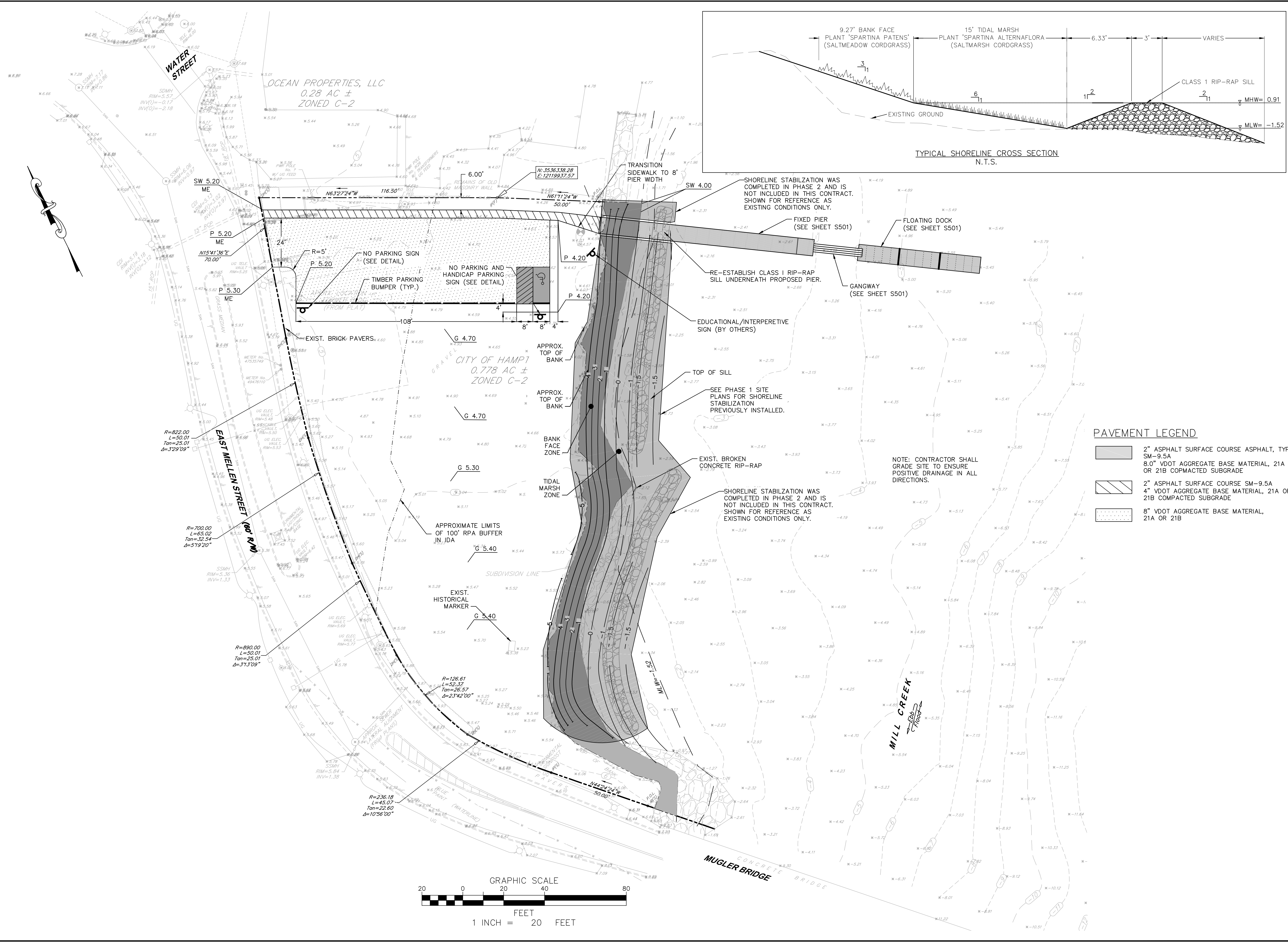


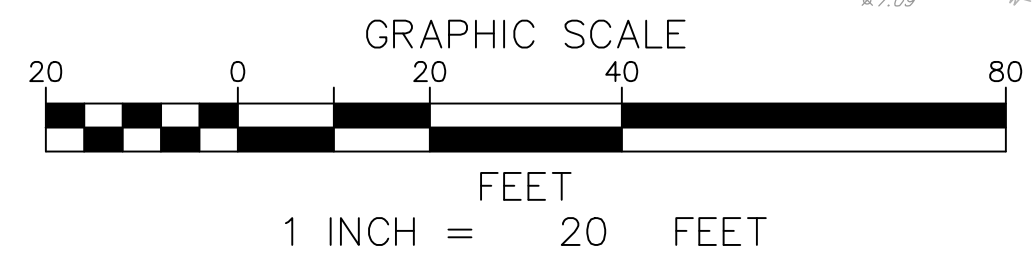
Plotted By: Kleinhenz, Jacob - Sheet: Sct:Kha - Layout: SITE - August 12, 2016 10:34:53am - K:\VAB-Civil\116227060 - Phoebus Waterfront Improvements\CADD\PlanSheets\227060-07-CS-100-SHORE.dwg
 This document, together with the concepts and designs presented herein, is intended only for the specific purpose and client for which it was prepared. Reuse of and improper reliance on this document without written authorization and adaptation by Kimley-Horn and Associates, Inc. shall be without liability to Kimley-Horn and Associates, Inc.



PAVEMENT LEGEND

	2" ASPHALT SURFACE COURSE ASPHALT, TYPE SM-9.5A
	8.0" VDOT AGGREGATE BASE MATERIAL, 21A OR 21B COMPACTED SUBGRADE
	2" ASPHALT SURFACE COURSE SM-9.5A
	4" VDOT AGGREGATE BASE MATERIAL, 21A OR 21B COMPACTED SUBGRADE
	8" VDOT AGGREGATE BASE MATERIAL, 21A OR 21B

NOTE: CONTRACTOR SHALL GRADE SITE TO ENSURE POSITIVE DRAINAGE IN ALL DIRECTIONS.



NO.	REVISIONS	DATE	BY

Kimley»Horn
 © 2015 KIMLEY-HORN AND ASSOCIATES, INC.
 4500 MAIN STREET, SUITE 500, VIRGINIA BEACH, VA 23462
 PHONE: 757-213-8600 FAX: 757-213-8601
 WWW.KIMLEY-HORN.COM

KHA PROJECT	116227060
DATE	08/12/2016
SCALE	AS SHOWN
DESIGNED BY	EAM
DRAWN BY	RCM
CHECKED BY	EAM

PIER AND PARKING LOT PLAN

PHOEBUS WATERFRONT IMPROVEMENTS
 PREPARED FOR
CITY OF HAMPTON
 VIRGINIA