

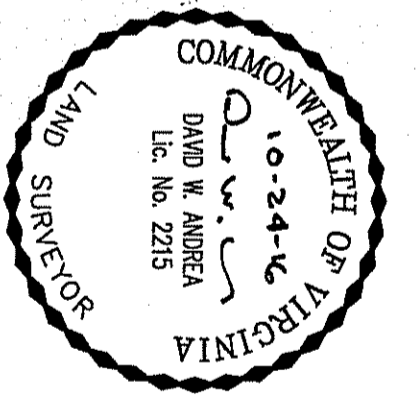
Plat Showing Boundary Survey
"Shelton on the Bay"

Parcel Owned by
AH&H Corp.
LRSN 12005714
City of Hampton, Virginia

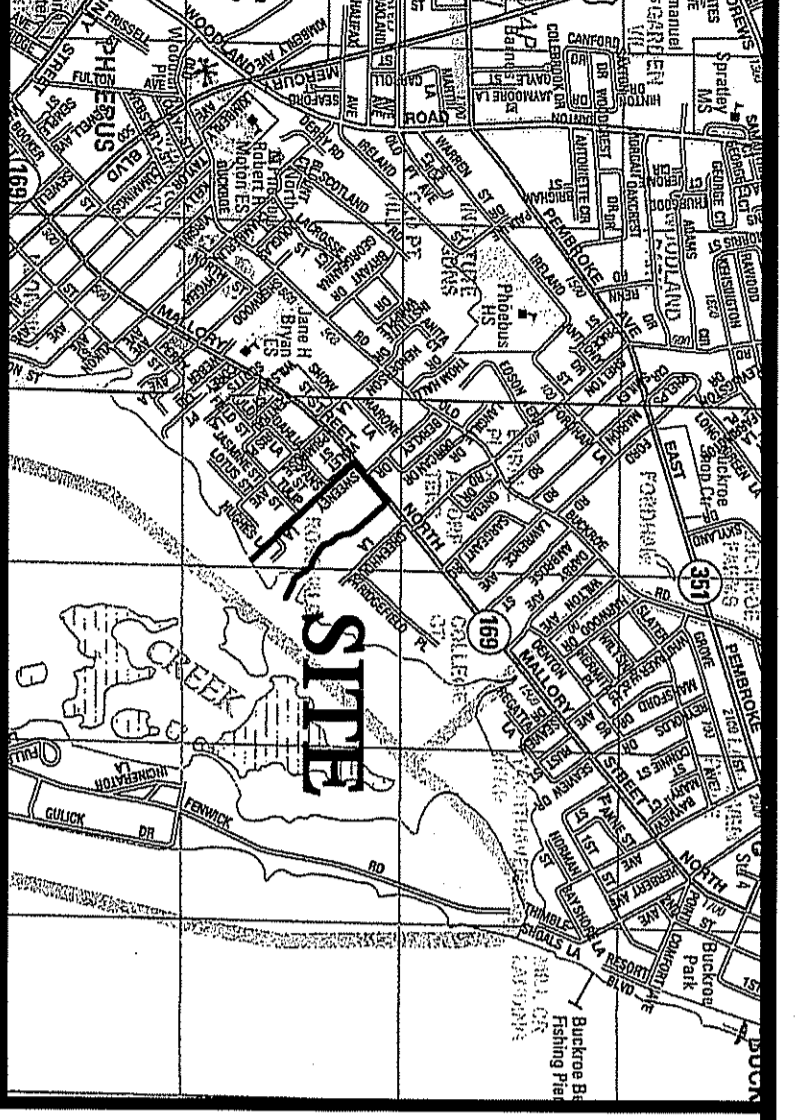
DATE: 10/24/16	SHEET 1 OF 2	SCALE: 1"=50'
PROJECT NO: 34184.00	DRAWN BY: DWP	CHECKED BY: DWA

vhb
 Transportation
 Land Development
 Environmental Services

Two Columbus Center
 4500 Main Street, Suite 400
 Virginia Beach, Virginia 23462
 757 490 0132 • FAX 757 490 0136



NOW OR FORMERLY
WARREN I. & RAMONA E. HERCULES
 LRSN 12005715
 D.B. 966, PG. 1086



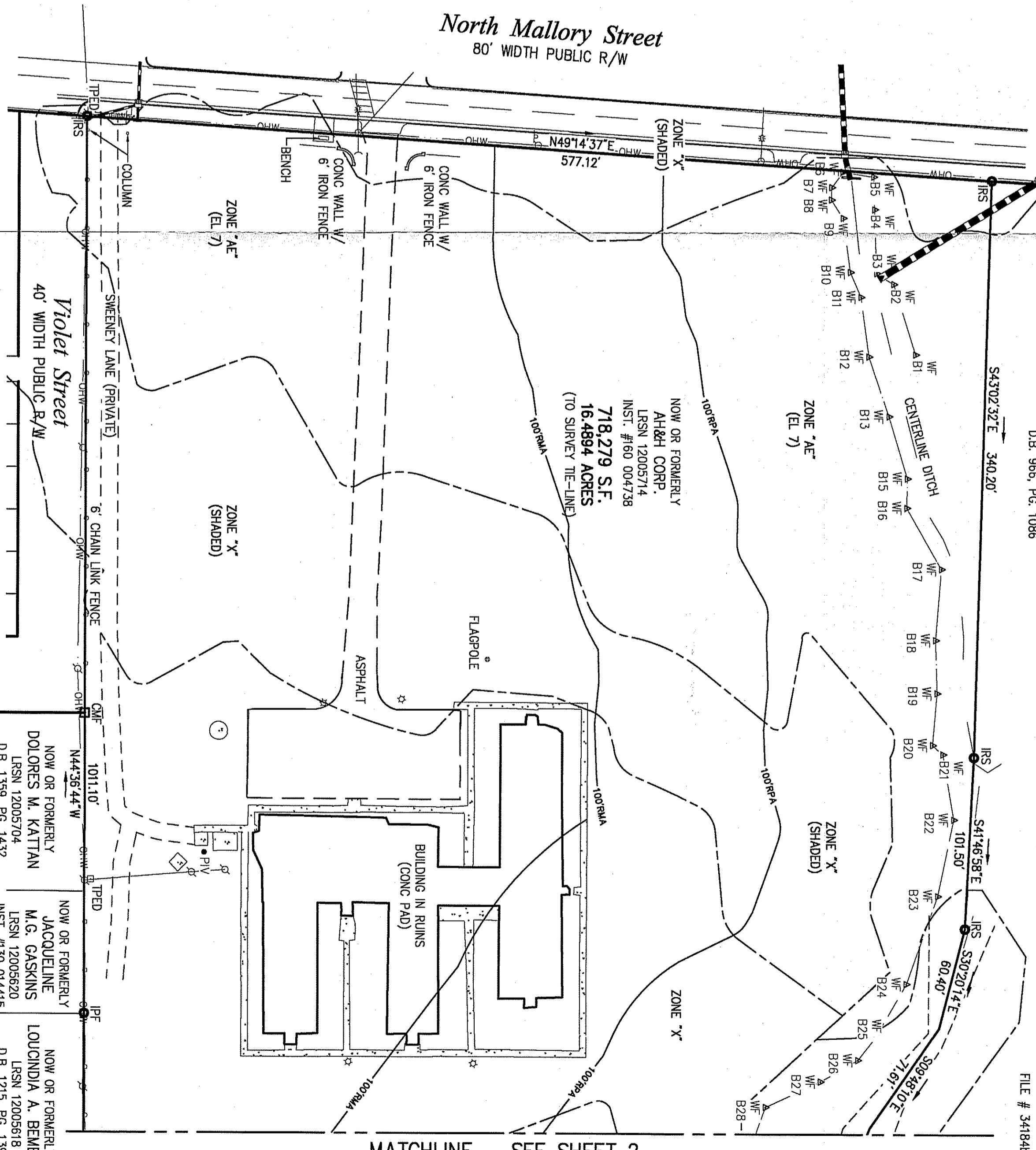
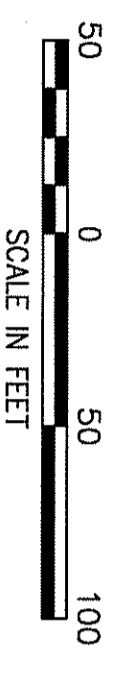
COPYRIGHT ADC THE MAP PEOPLE PERMITTED USE NUMBER 20907171
 VICINITY MAP: 1" = 2000'

General Notes

- THIS PROPERTY IS IN FLOOD ZONE X (AREAS OUTSIDE THE 0.2% ANNUAL CHANCE FLOODPLAIN), ZONE X SHADED (AREAS OF 0.2% ANNUAL CHANCE FLOOD, AREAS OF 1% CHANCE FLOOD WITH AVERAGE DEPTHS OF LESS THAN 1 FOOT OR DRAINAGE AREAS LESS THAN 1 SQUARE MILE), ZONE AE (BASE FLOOD ELEVATIONS DETERMINED) AND ZONE VE (COASTAL FLOOD ZONE WITH VELOCITY HAZARD, BASE FLOOD ELEVATIONS DETERMINED) AS INDICATED ON THE FLOOD INSURANCE RATE MAP FOR THE CITY OF HAMPTON, VIRGINIA HAVING COMMUNITY PANEL NUMBER 515527 0027H, DATED MAY 16, 2016
- THE PROPERTY LINES SHOWN ON THIS PLAT ARE BASED UPON AN ACTUAL FIELD SURVEY BY VHB, INC. IN OCTOBER 2016 AND FROM DEEDS AND PLANS OF RECORDS.
- MERIDIAN SOURCE: VIRGINIA STATE PLANE COORDINATE SYSTEM, SOUTH ZONE - NAD83 (NSRS2011) AND ARE BASED ON CITY OF HAMPTON CONTROL MONUMENTS GV6192 AND GV6193
- THE SURVEY WAS PERFORMED WITHOUT THE BENEFIT OF A TITLE REPORT AND MAY NOT SHOW ANY/ALL EASEMENTS OR RESTRICTIONS THAT MAY AFFECT THE PROPERTY SHOWN HEREON.
- WETLANDS WERE DELINEATED BY VHB IN OCTOBER 2016

Legend

- IRF IRON PIPE FOUND
 - IRF IRON ROD FOUND
 - IRF IRON ROD SET
 - DHS DRILL HOLE SET
 - CMF CONC MONUMENT FOUND
 - ⊙ STORM SEWER MANHOLE
 - ⊠ CURB DRAIN INLET (CDI)
 - ▭ DRAIN INLET (YD)
 - ▶ FLARED END SECTION
 - WATER VALVE
 - PIV POST INDICATOR VALVE (PIV)
 - ⊠ TELEPHONE PEDESTAL
 - ☆ LIGHT POLE
 - UTILITY POLE
 - UTILITY POLE W/LIGHT
 - GUY WIRE
 - BOLLARD
 - ⊠ STREET SIGN
 - ▲ WETLAND FLAG
 - WF-100
- EDGE OF PAVEMENT
 - CONCRETE CURB
 - CONCRETE CURB & GUTTER
 - CHAIN LINK FENCE
 - STORM SEWER LINE
 - OVERHEAD WIRE
 - 100-FT RMA LINE
 - 100-FT RPA LINE
 - 100-FT BUFFER ZONE
 - 100-FT BUFFER ZONE
 - VEGETATED WETLAND BOUNDARY
 - CONC. PAVEMENT



State Of Virginia
City of Hampton to Wit:

IN THE CLERK'S OFFICE OF THE CIRCUIT COURT FOR THE CITY OF HAMPTON, THE DAY OF _____ THIS MAP WAS PRESENTED AND ADMITTED TO RECORD AS THE LAW DIRECTS AS INSTRUMENT NUMBER _____

TESTE: _____
 BY: _____
 CLERK

NOW OR FORMERLY
DOLORES M. KATTAN
 LRSN 12005704
 D.B. 1359, PG. 1432

NOW OR FORMERLY
JACQUELINE M.G. GASKINS
 LRSN 12005620
 INST. #130 0144151

NOW OR FORMERLY
LOUCINDIA A. BEMBRURY
 LRSN 12005618
 D.B. 1215, PG. 1396

MATCHLINE - SEE SHEET 2