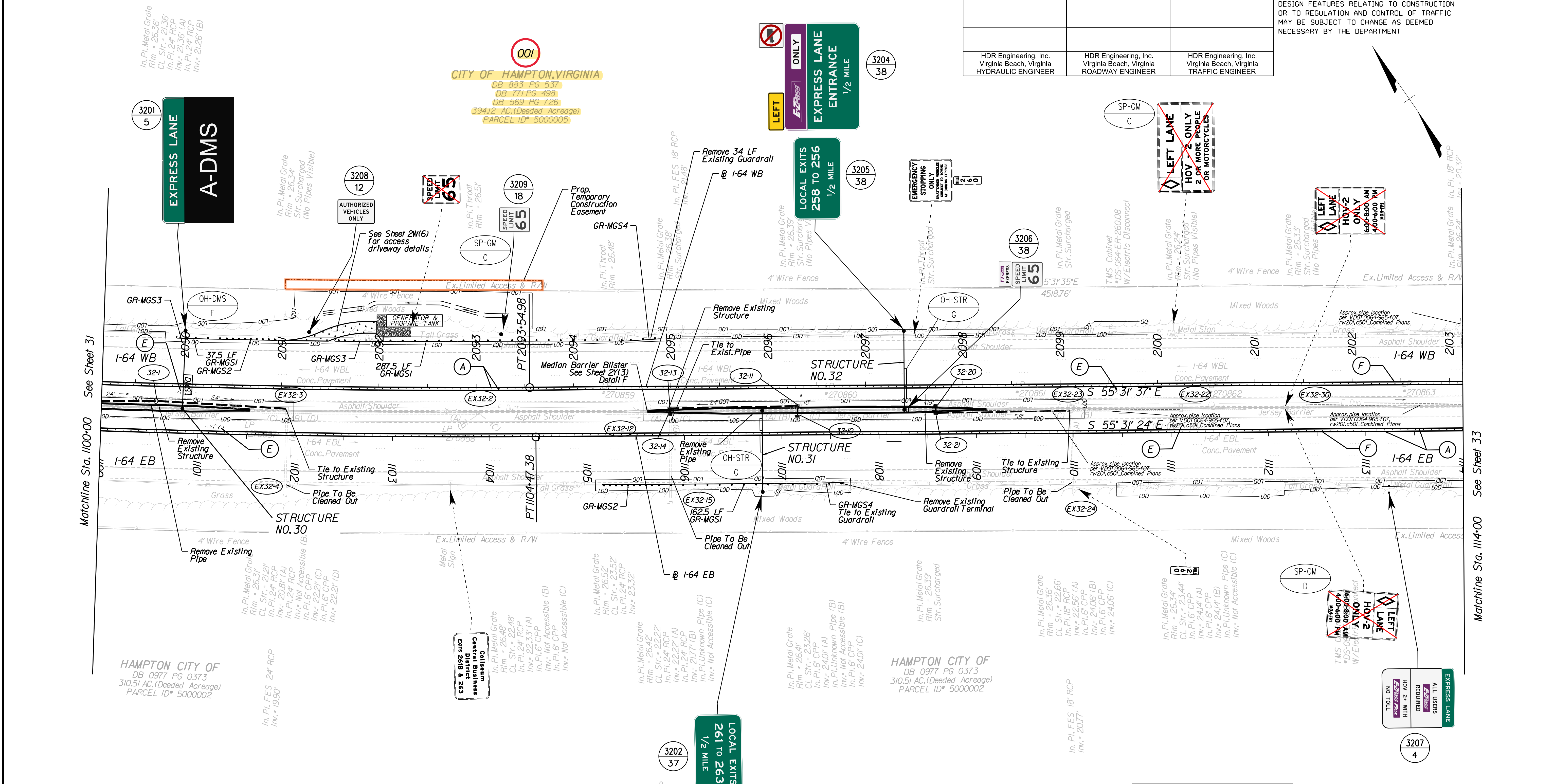


PROJECT MANAGER: *Erin Eoley, P.E.* (757) 222-1500  
SURVEYED BY, DATE: *Rise Associates, Inc.* (757) 306-4260  
DESIGN BY: *HDR, Engineer Inc.*  
SUBSURFACE UTILITY BY, DATE: *N/A*

REVISION	STATE	ROUTE	PROJECT	SHEET NO.
	VA.	64	0064-121-418, PE-101	32

DESIGN FEATURES RELATING TO CONSTRUCTION OR TO REGULATION AND CONTROL OF TRAFFIC MAY BE SUBJECT TO CHANGE AS DEEMED NECESSARY BY THE DEPARTMENT

HDR Engineering, Inc. Virginia Beach, Virginia HYDRAULIC ENGINEER  
HDR Engineering, Inc. Virginia Beach, Virginia ROADWAY ENGINEER  
HDR Engineering, Inc. Virginia Beach, Virginia TRAFFIC ENGINEER



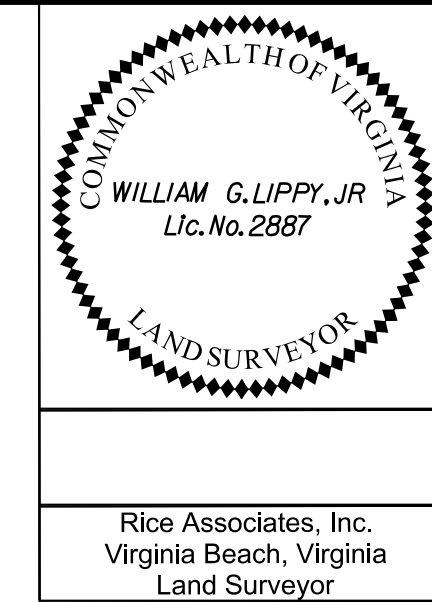
REFERENCES  
(PROFILES, DETAIL & DRAINAGE DESCRIPTION SHEETS, ETC.)

E&S Control Plan	32C
ITS & Tolling	54(32)
Lighting	55(32)
Access Driveway Details	2W(6)

R.W. PLANS

THESE PLANS ARE UNFINISHED AND UNAPPROVED AND ARE NOT TO BE USED FOR ANY TYPE OF CONSTRUCTION.

PROJECT MANAGER: *Erin Ealey, P.E.* (757) 222-1500  
 SURVEYED BY, DATE: *Rice Associates, Inc.* (757) 306-4260  
 DESIGN BY: *HDR, Engineering, Inc.*  
 SUBSURFACE UTILITY BY, DATE: *N/A*

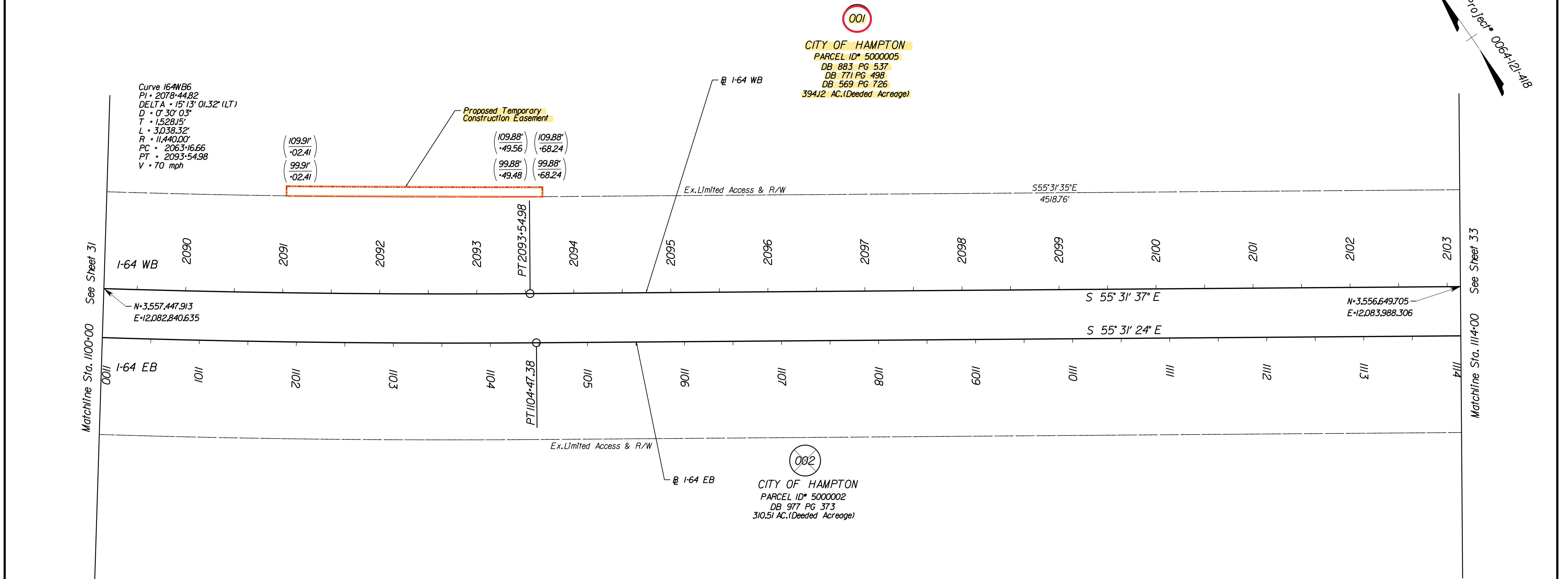
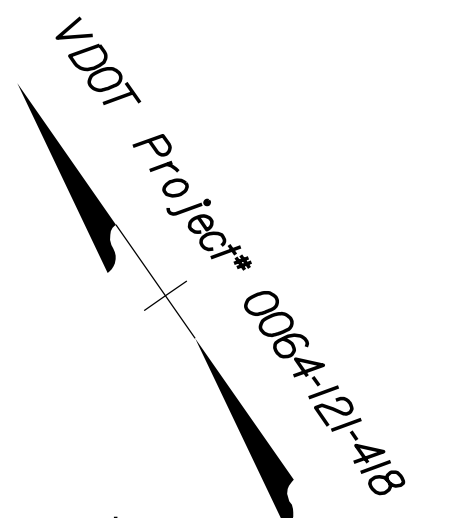


REVISED	STATE	ROUTE	STATE PROJECT	SHEET NO.
	VA.	64	0064-121-418, P101, R201	32RW

DESIGN FEATURES RELATING TO CONSTRUCTION OR TO REGULATION AND CONTROL OF TRAFFIC MAY BE SUBJECT TO CHANGE AS DEEMED NECESSARY BY THE DEPARTMENT

Rice Associates, Inc.  
Virginia Beach, Virginia  
Land Surveyor

# RIGHT-OF-WAY PLAN



- General Notes:**
- This Plan is based on a survey by Rice Associates, Inc.
  - All of the properties' physical improvements are not shown hereon.
  - This plan sheet was performed without the benefit of a title report and may not show all easements which may affect the properties shown hereon.
  - Parent parcel acreage reference recorded deeds minus known acquisitions. All parent parcel acquisitions may not be accounted for.
  - The survey datum is based on VDOT Project Coordinates NAD 83 and NAVD 88 (Geoid 18).

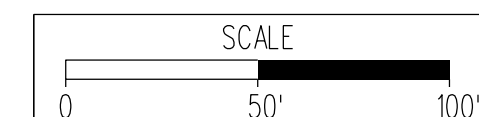
Area Table

Parcel Number	Temp. Const. Easement
001	2,635 Sq. Ft.

**LEGEND**

Existing Right-of-Way ————

Temporary Construction Easement - - - - -



PROJECT: 0064-121-418  
SHEET NO.: 32RW