

HAMPTON VA

Hampton-Langlely Joint Land Use Study (JLUS) Addendum

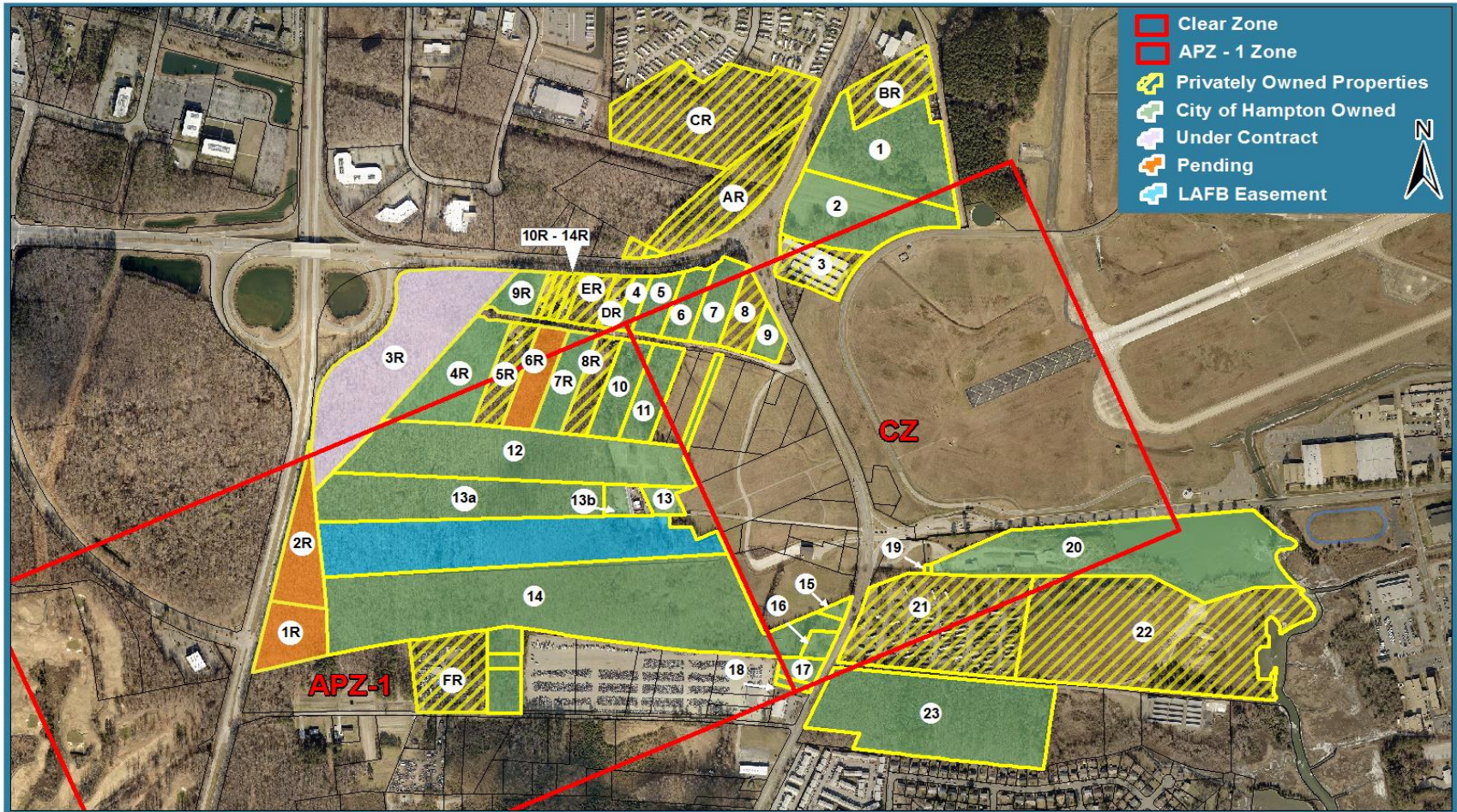
**City Council
September 26, 2018**



Purpose of JLUS

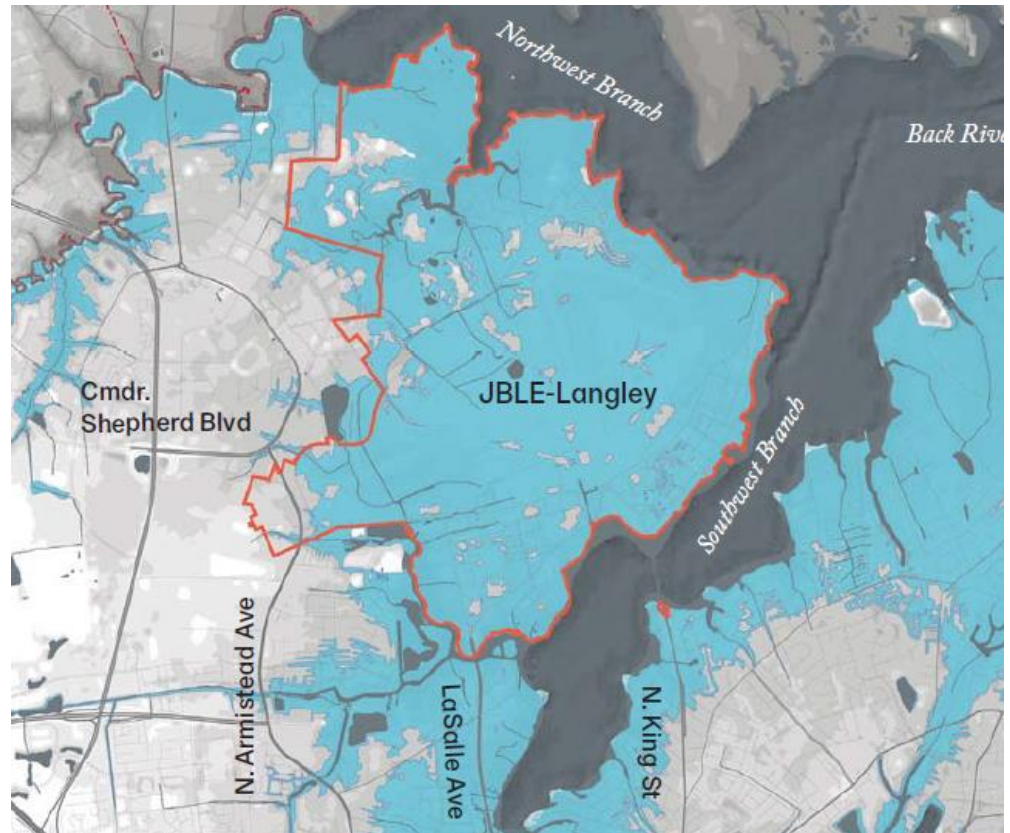
- Cooperative planning between active military installation and surrounding jurisdiction
 - Hampton and JBLE-Langley
- Address compatibility around military installations
- Reduce potential conflicts between installation and locality
- Hampton-Langley JLUS adopted in August 2010

Langley Flight Approach Zone - CZ



Resilience Addendum

- Update to 2010 JLUS focusing on **resilience and adaption**
- JBLE-Langley is at increased risk from sea level rise and recurrent flooding



100-Year (1% annual chance) Floodplain (or equivalent)

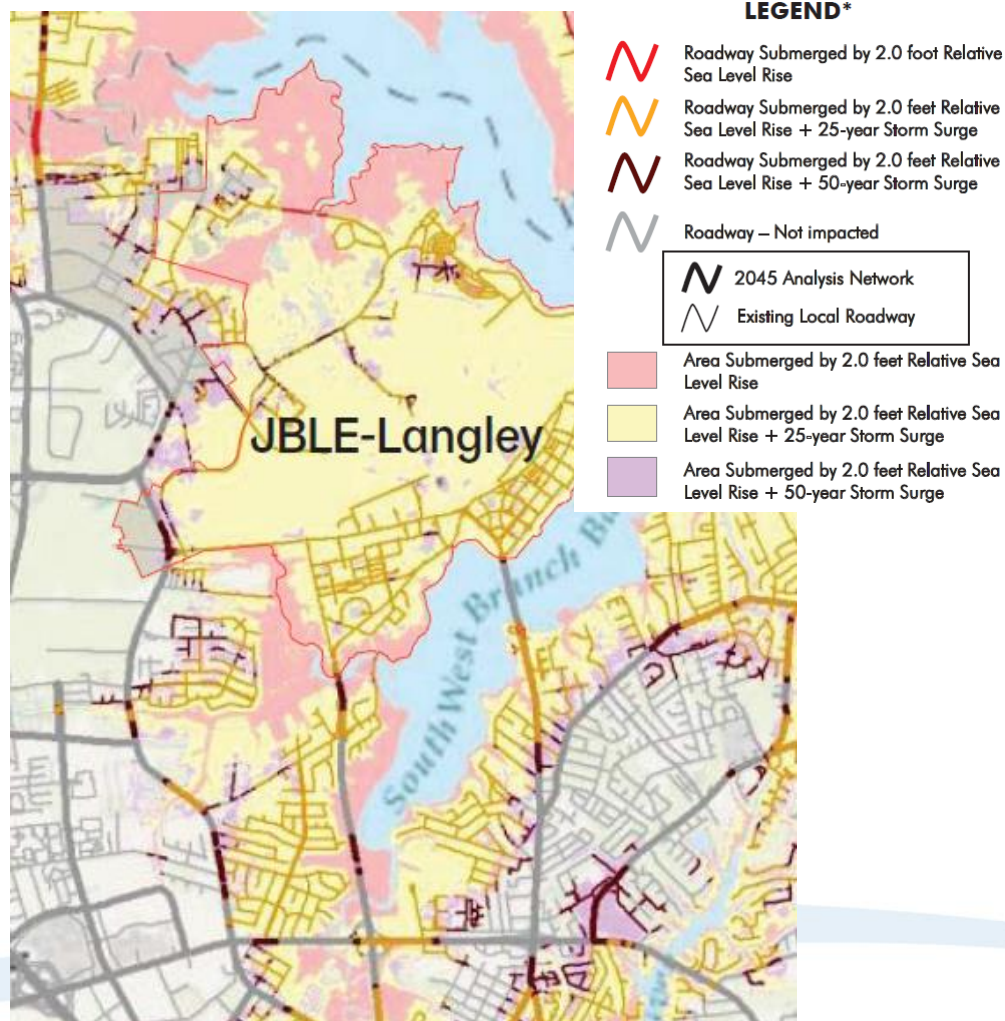
Process

- Understand mission readiness
 - Resources
 - Partners
- Determine vulnerabilities
 - On-base, off-base
 - Anticipated future conditions
- Recommendations

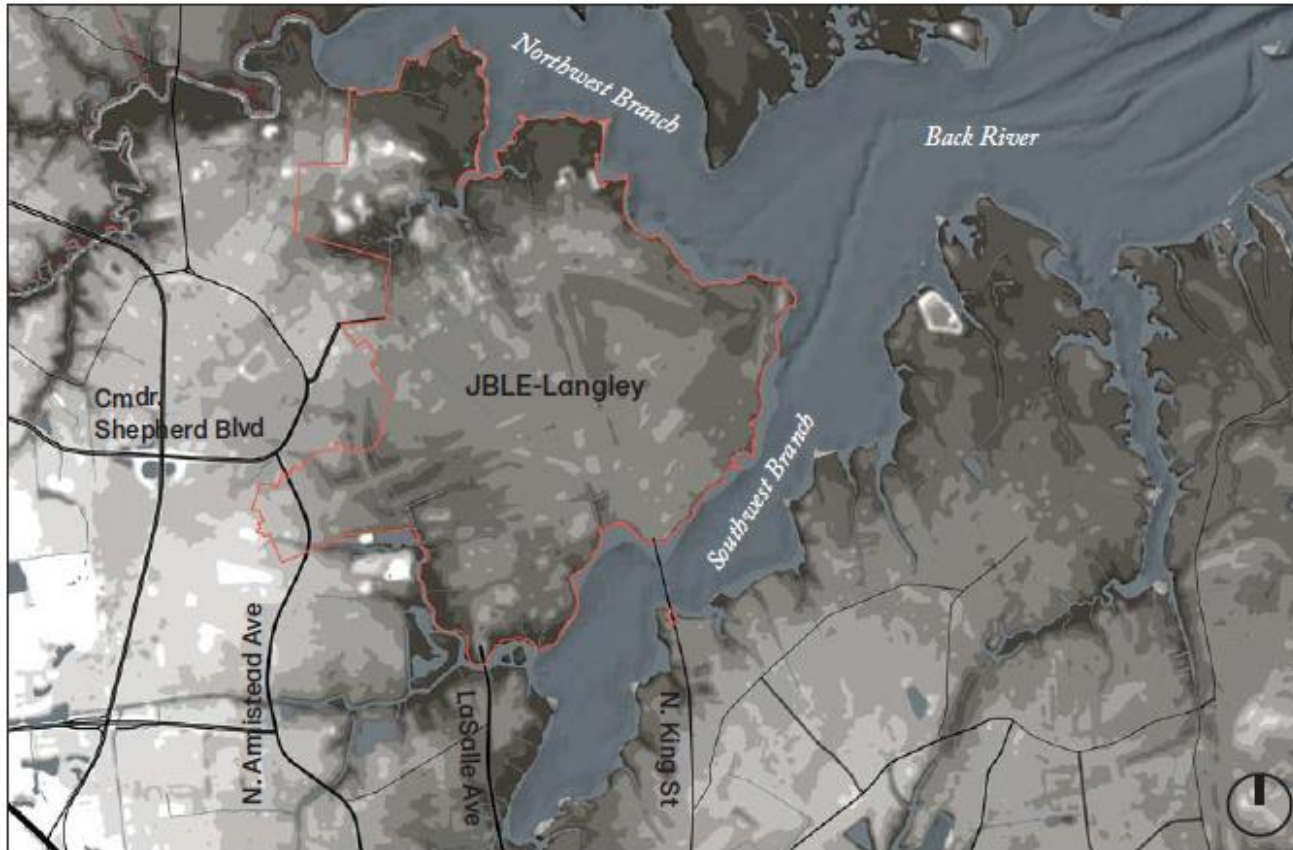


Partners

- JBLE-Langley
- City of Hampton
- Waggoner and Ball
- Moffat Nichol
- NASA
- Dominion Energy
- Cox
- Verizon
- Hampton Roads Transportation Planning Organization
- Virginia Natural Gas
- Newport News Water Works
- HRSD

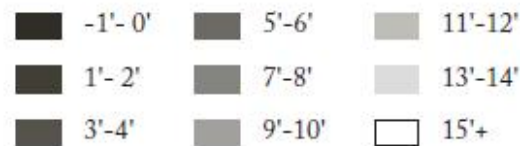


Overview - Challenges

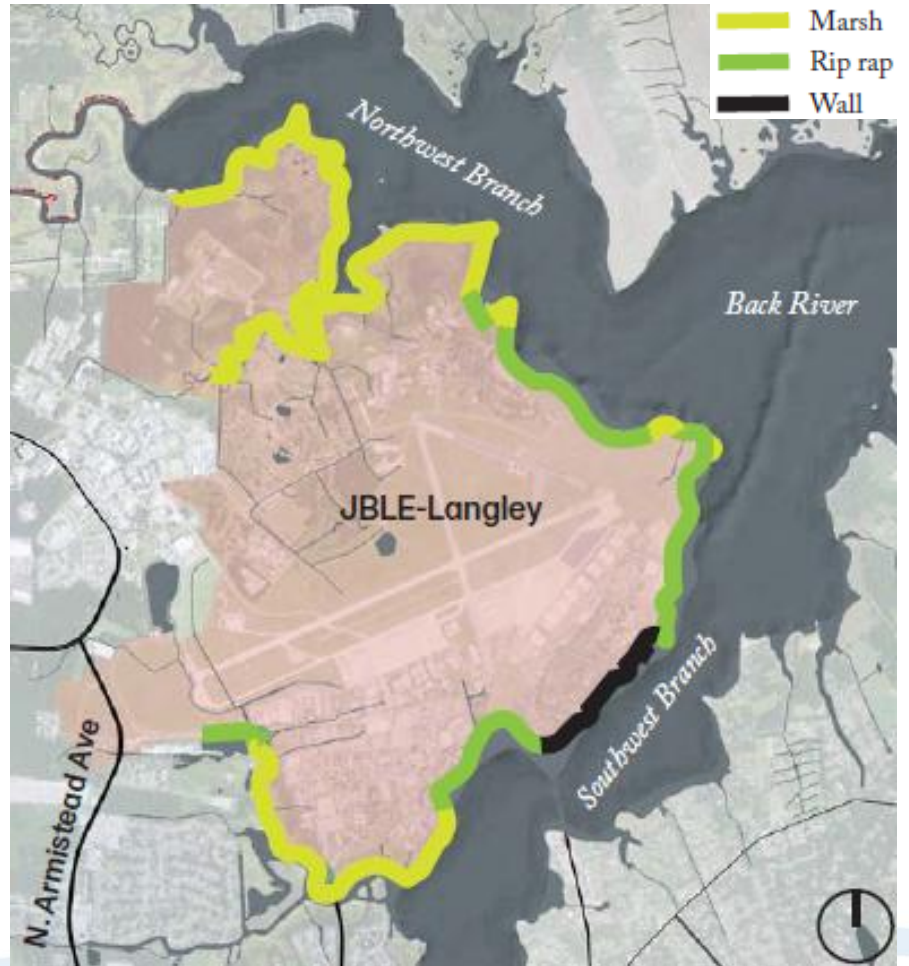


Elevation

The topography of Hampton has a significant amount of low elevations near water, the cause of many flooding issues. Much of JBLE-Langley sits between 5-8' in elevation. Surrounding low wetlands with proximity to the bay and higher ground nearby allow for varied shore conditions and types of access to water.

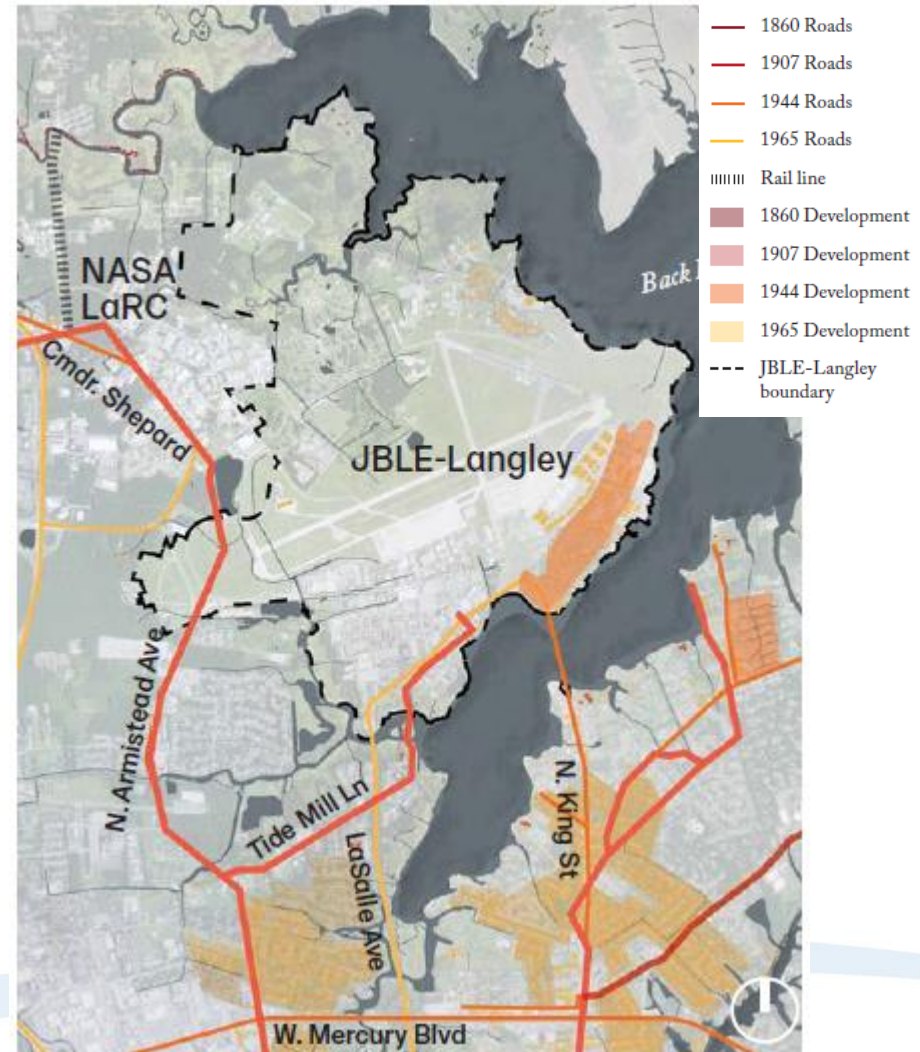


Overview – Natural Systems



Overview – Character and Place

- Resilience involves community and development
- Historical base
- Opportunity for shared community assets and development

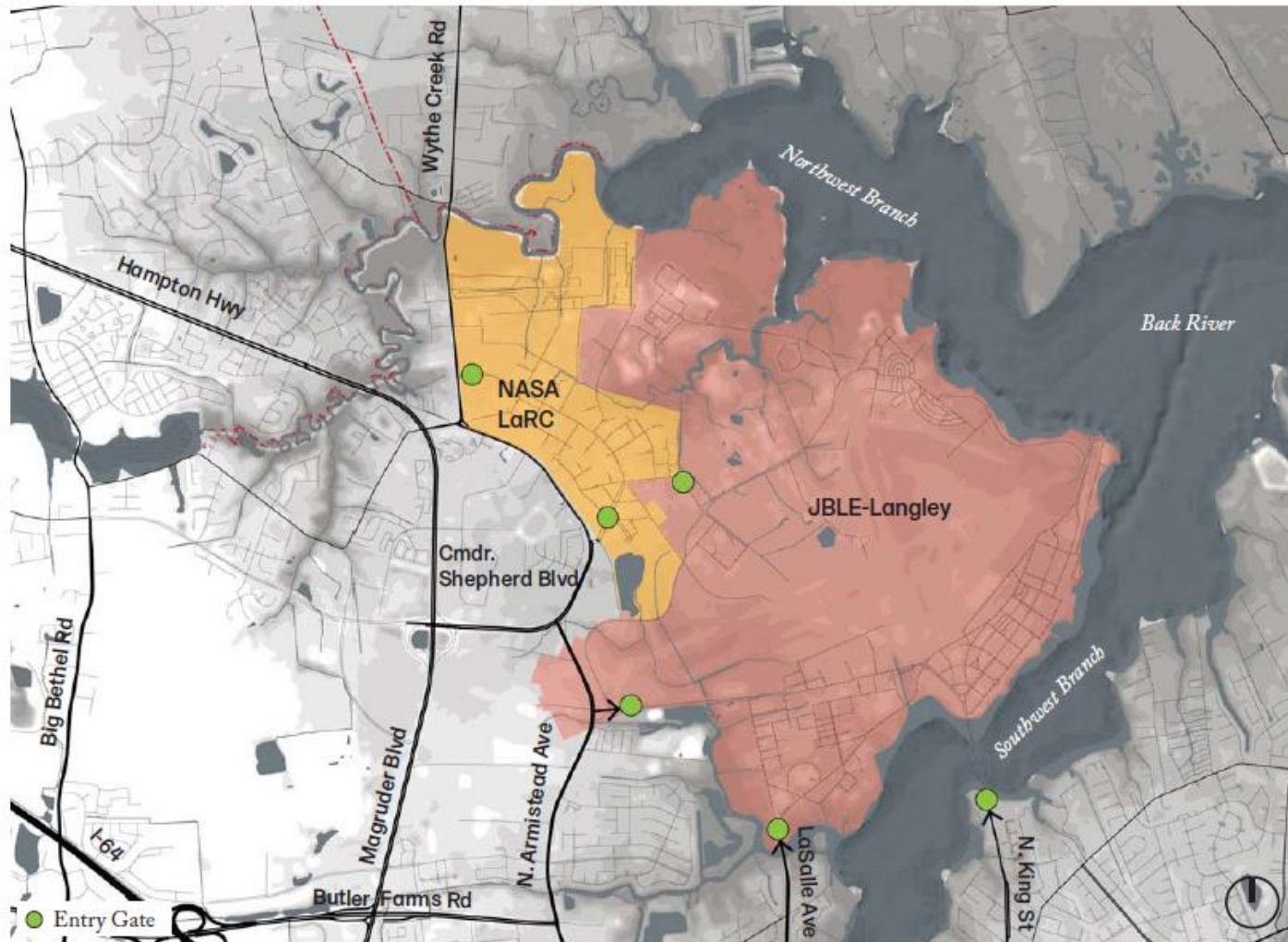


Overview – Inside the Base

- Successful systems
 - Sanitary
 - Natural Gas
 - Food
- Risks from various utilities
- Opportunities
 - Decoupling
 - Interdependencies

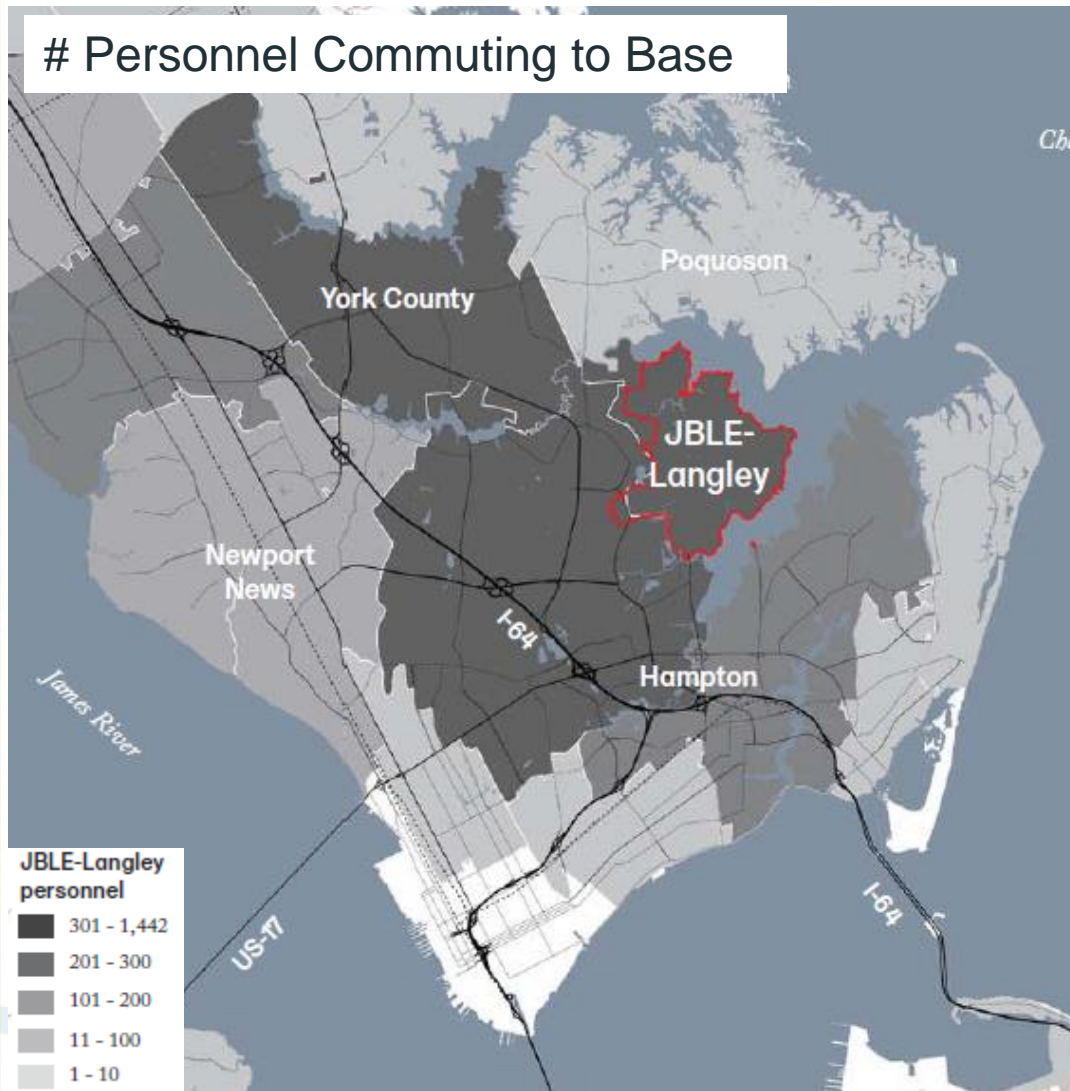


Overview - Boundaries



Overview – Access and Transportation


Personnel Commuting to Base



Recommendations

- Responsible agencies
- Order of magnitude cost
 - CIP budget, significant CIP project
- Priority
- Funding sources
- Specific implementation actions
- Connection to Resilient Hampton

PRINCIPLES	
Create Value-Driven Solutions	
Reinforce Assets	
Layer Public Benefits	
Strengthen Partnerships	
Use Best Data	
Share Knowledge & Resources	
VALUES	
Safe	
Equitable	
Natural	
Heritage	
Integrated	
Sufficient	
Nimble	
Innovative	
LOCATION	
Inside JBLE-Langley	
Outside JBLE-Langley	
Both	
RESPONSIBILITY	
City of Hampton	
JBLE-Langley	
City of Newport News	
City of Poquoson	
York County	
Commonwealth of Virginia	
JLUS Implementation Commit.	
HRTPO	
VDOT	
NASA	
Other (see text)	
ROM COST	
< \$50,000	
> \$50,000	
> \$1,000,000	
PRIORITY	
Short Term	
Medium Term	
Long Term	

Lead Agency = 

Next Steps

- Form the Hampton Resiliency Partnership with JBLE-Langley as integral member
 - Collaborate with JBLE-Langley and others to move forward priority projects
- 

Recommendation

Approve resolution 18-0314