

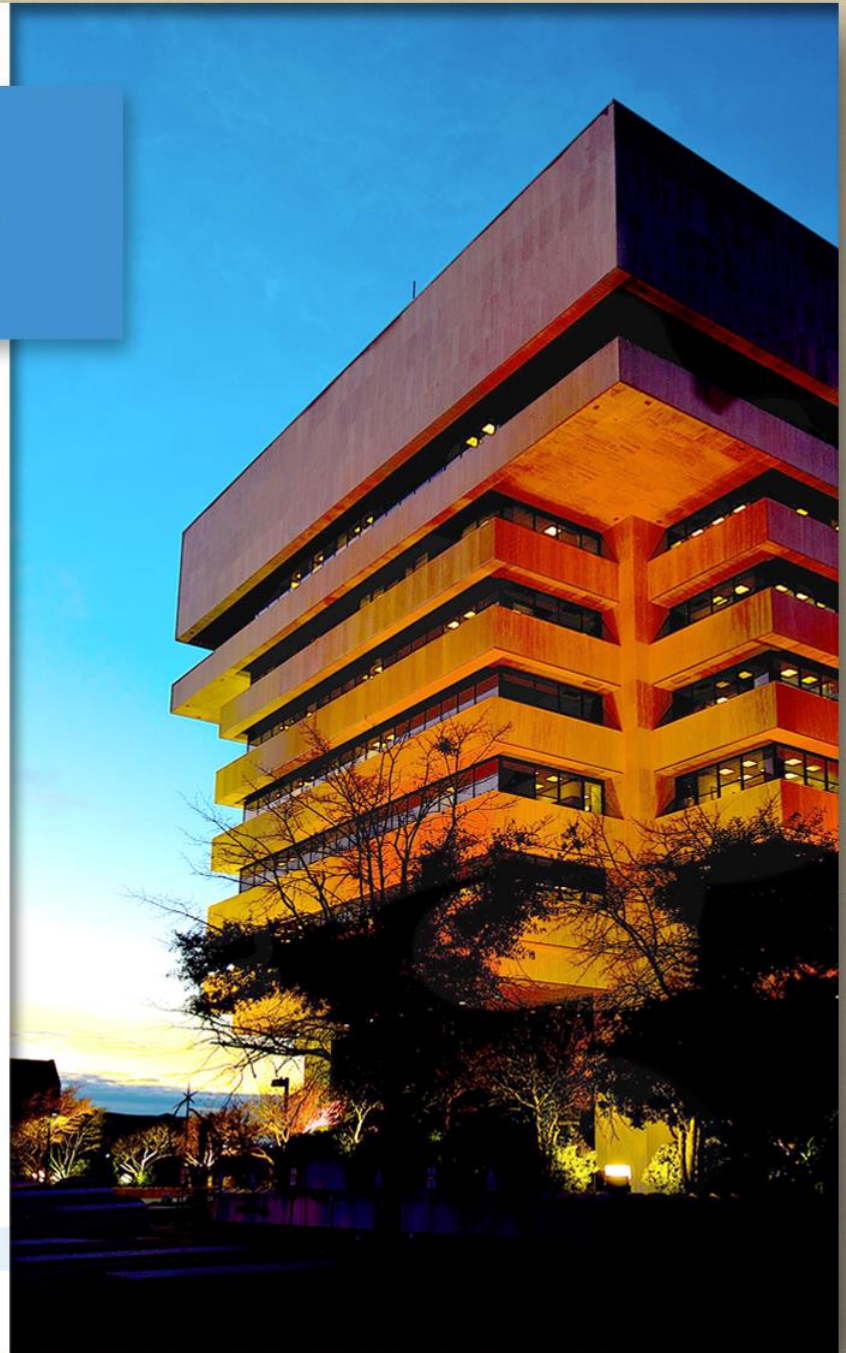
HAMPTON VA

22-0346

300 Marcella Road

***Hampton Newport News
Community Services Board***

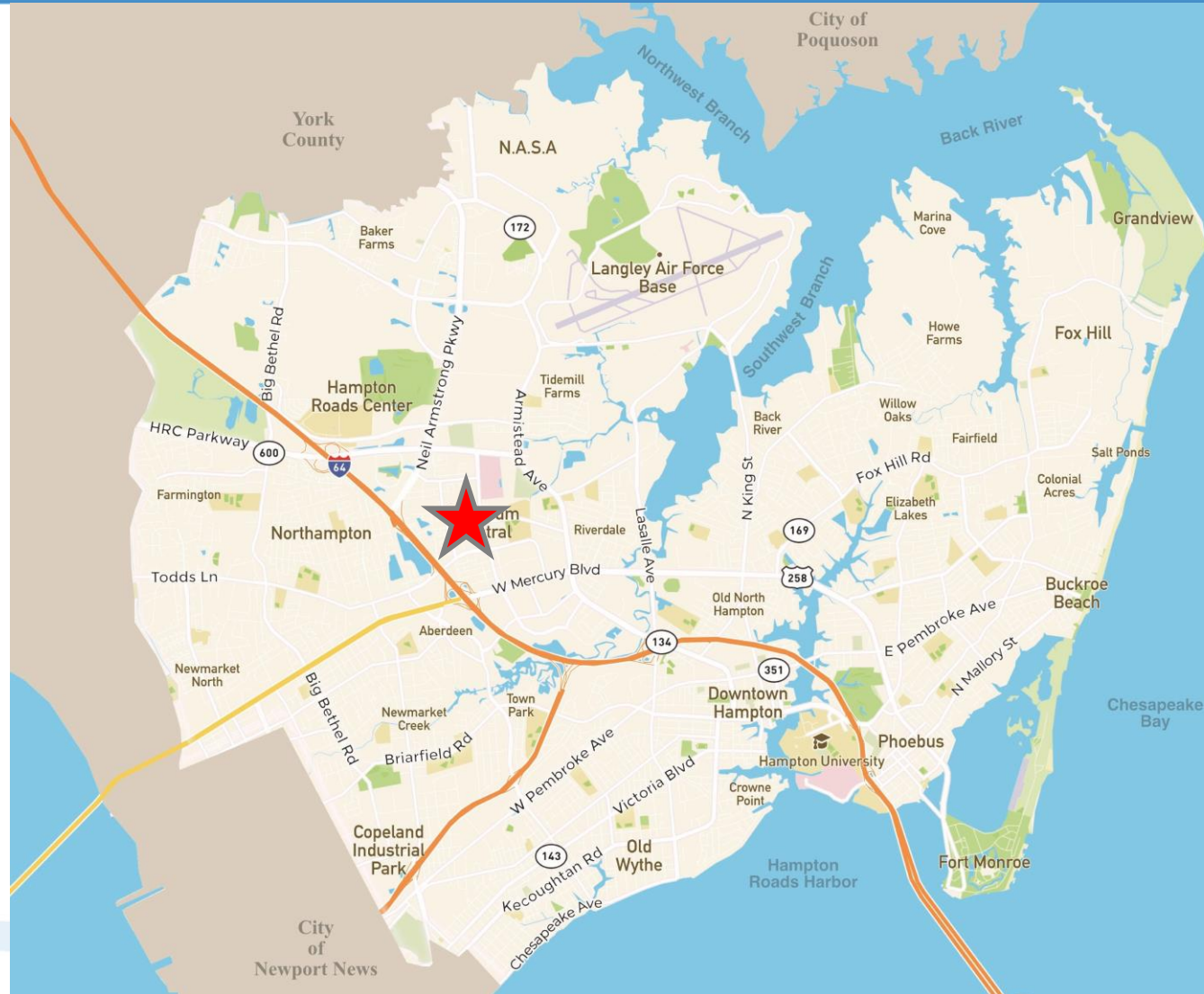
**City Council
January 11, 2023**



Application

Use Permit to allow a mental health/
substance abuse treatment facility
within the Limited Commercial (C-2) &
Overlay Coliseum Central (O-CC)
Districts

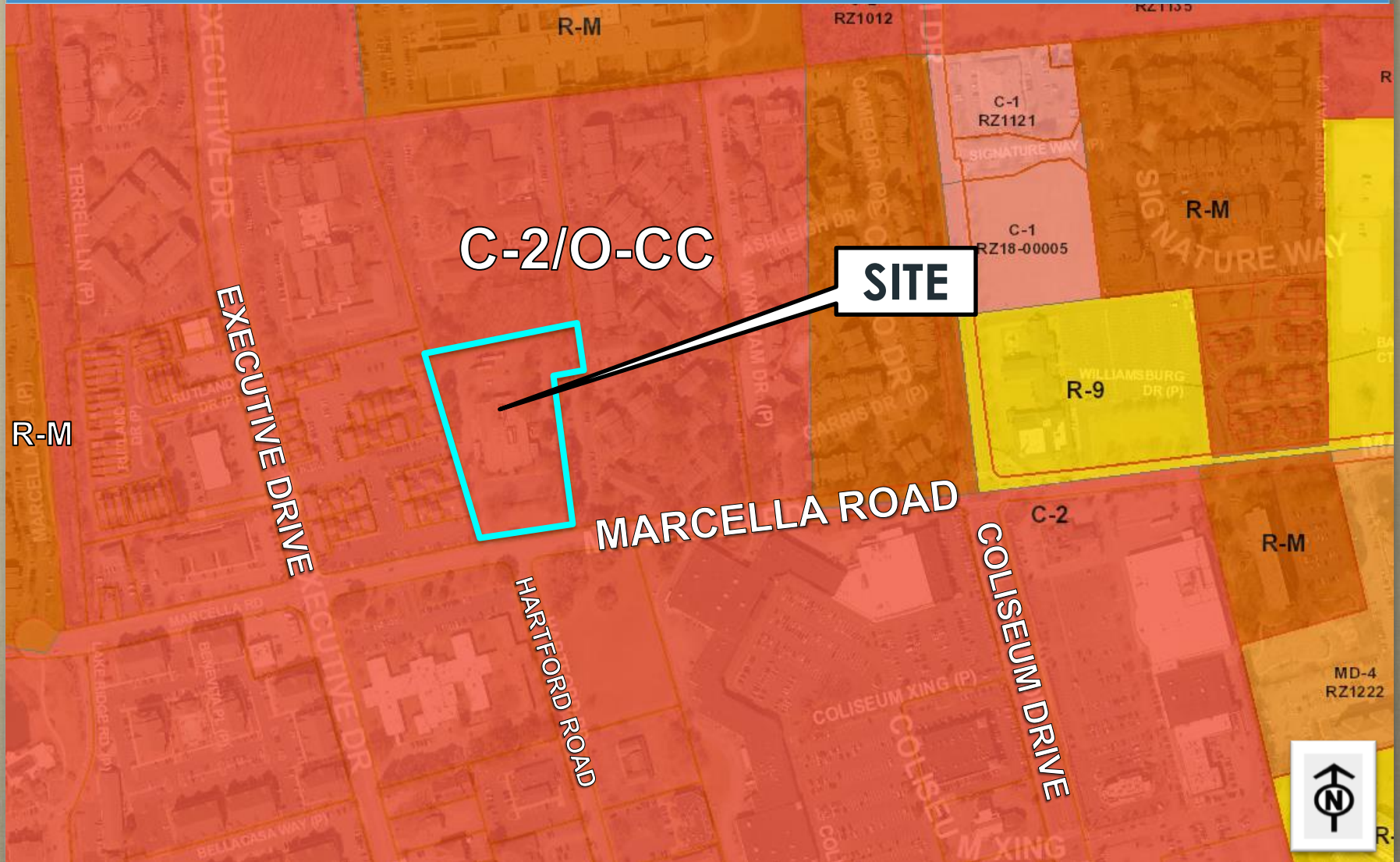
Location Map



Location Map



Zoning Map



Definition

Mental health/substance abuse treatment facility. A facility licensed by the Commonwealth of Virginia which primarily provides treatment for mental health issues on an inpatient basis for stays in excess of twenty-four (24) hours or treatment for substance abuse issues on an inpatient or outpatient basis through the dispensation of controlled substances.

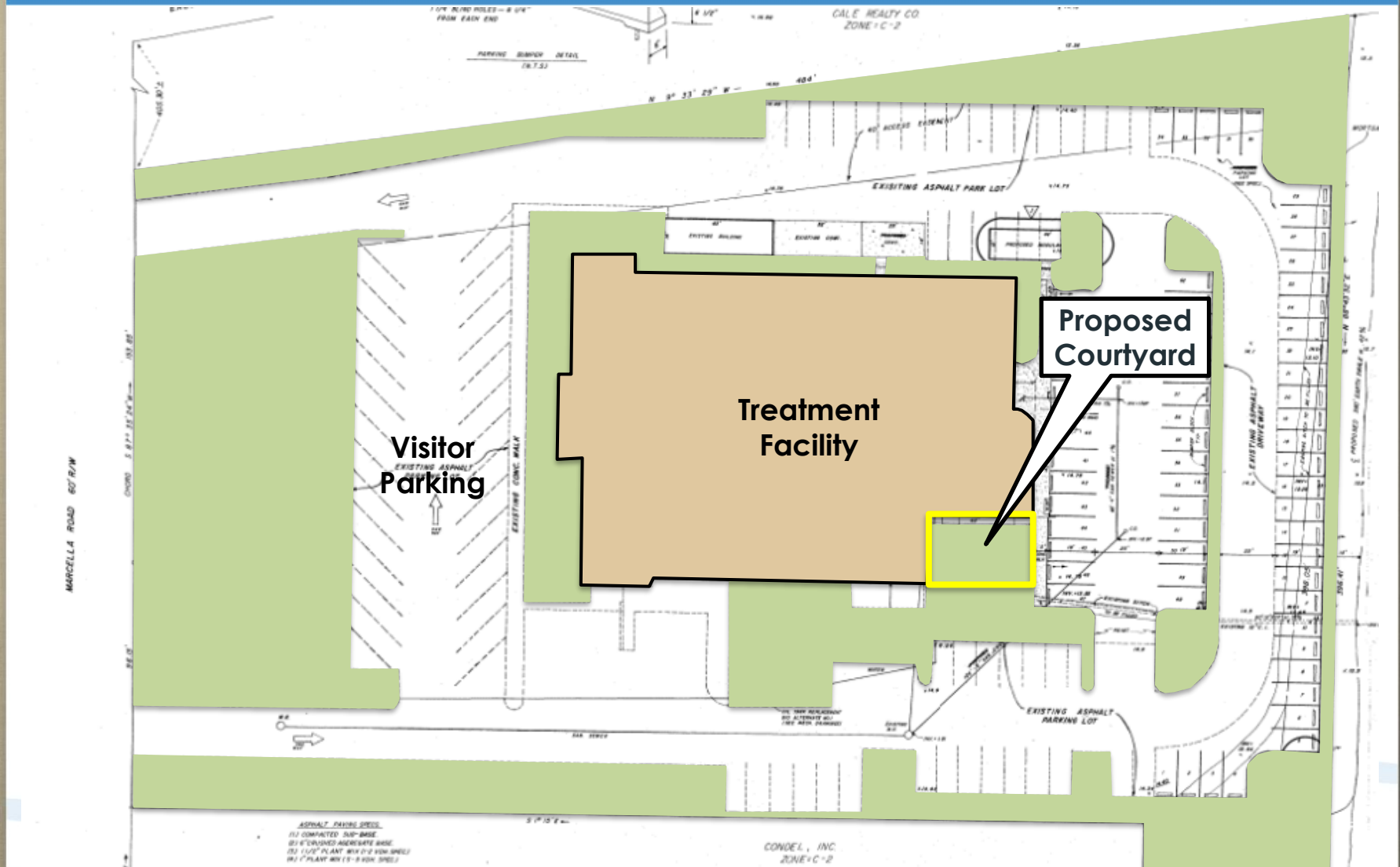
Background

- ZOA 22-000007 & ZOA 22-000008
- C-2 and O-CC Zoning Districts
- Subject to an approved use permit
- Facility must be operated by CSB or state – licensed hospital

Proposal

- Complies with the C-2 & O-CC Zoning
- Operated by Hampton - Newport News Community Services Board

Site Plan



Proposal

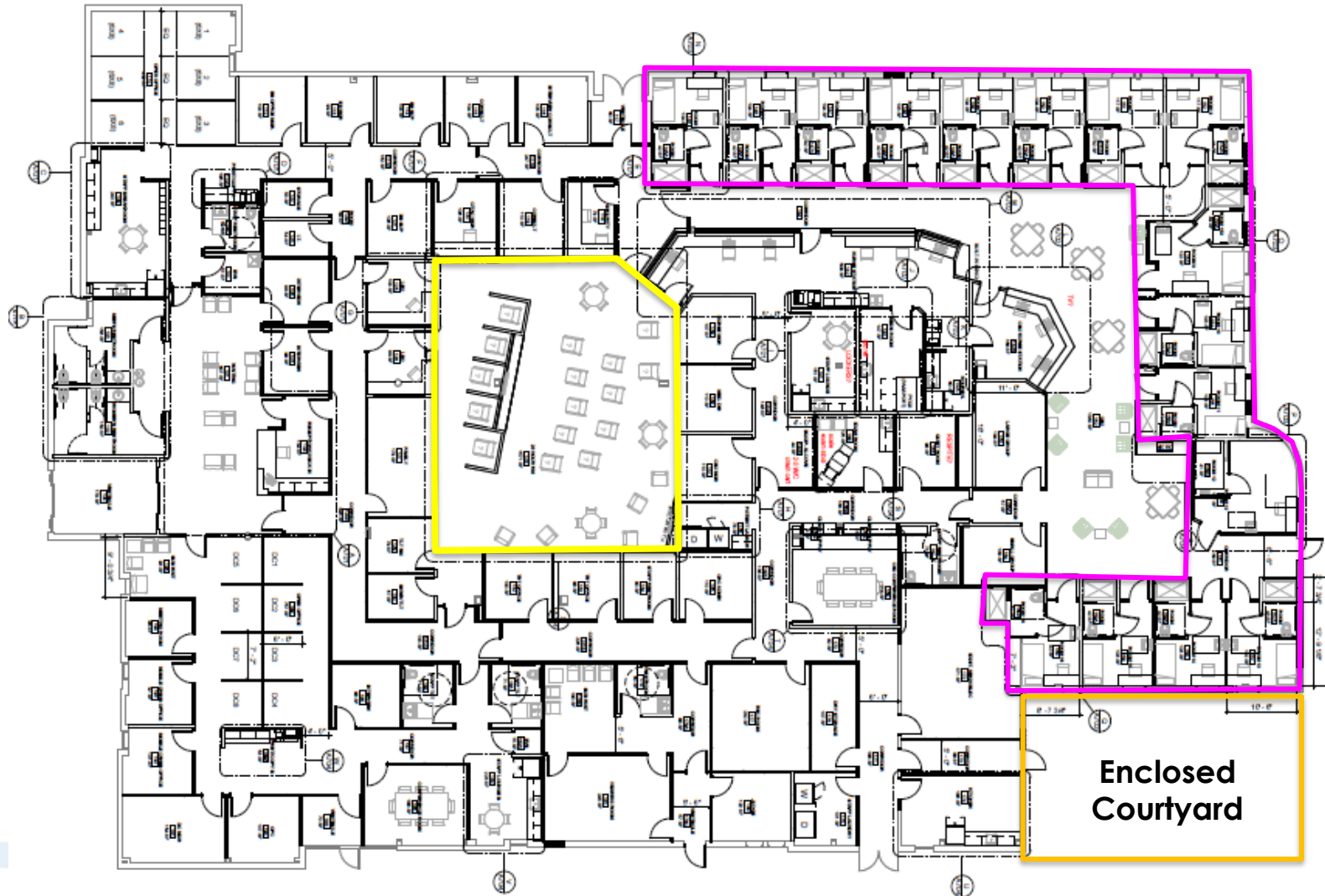
Proposed Improvements:

- Refurbished building exterior
 - Enclosed outdoor patio
 - Fencing & landscaping
 - Landscape buffer between adjacent properties
 - Resurfaced parking area
 - Security upgrades
- 
- A decorative wavy line in a light blue color, spanning the width of the slide near the bottom.

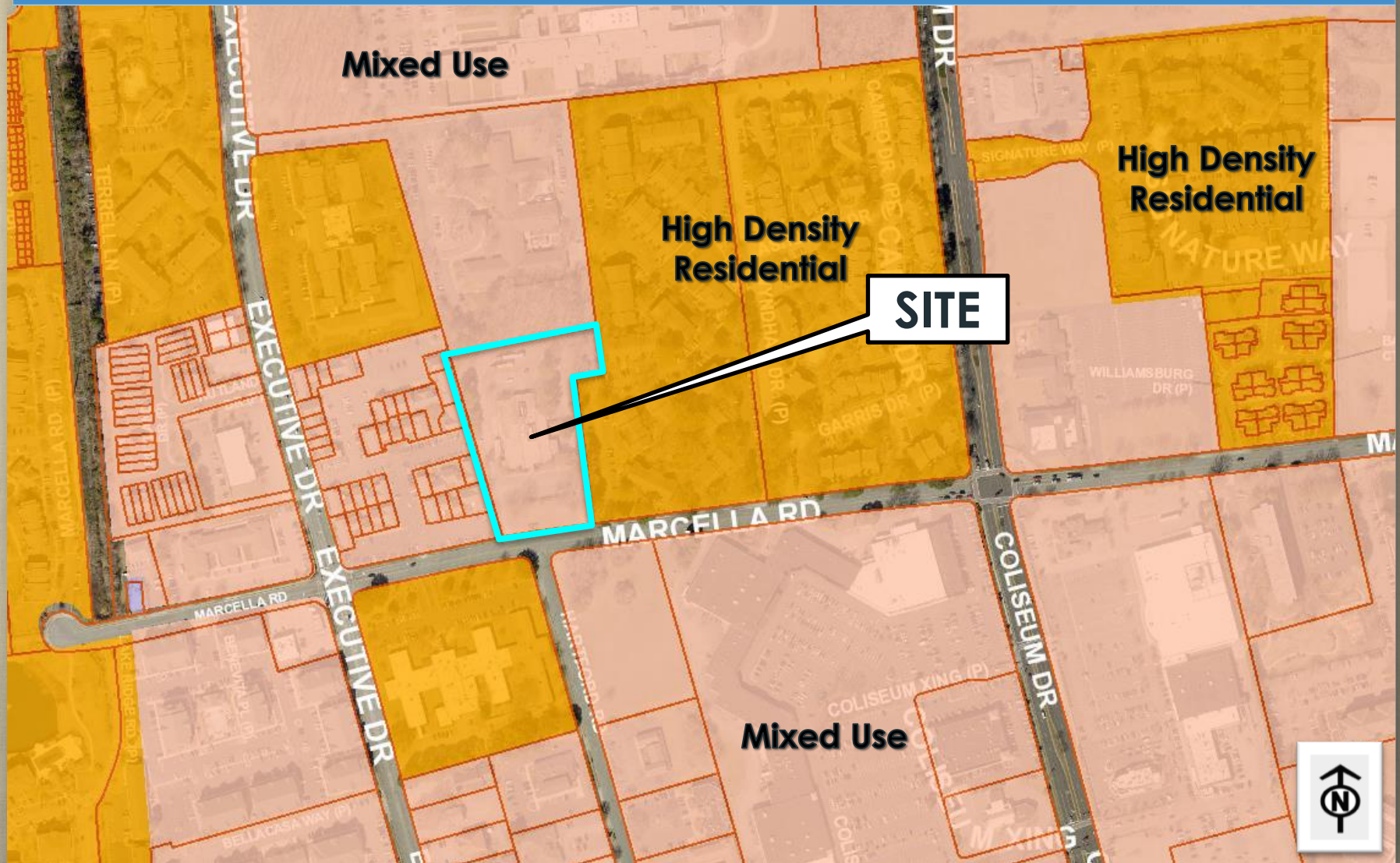
Proposal

- Operation
 - 24/7 services
 - 20,234 square foot building
 - 23-hour observation room (16 recliners)
 - 16 single occupancy rooms (3-7 days)
 - Support services: medical, therapy, counseling
 - Security Plan
- Customers
 - Transfer custody of individuals under Emergency Custody Order (ECO)
 - Walk-in individuals voluntarily seeking assessment & treatment

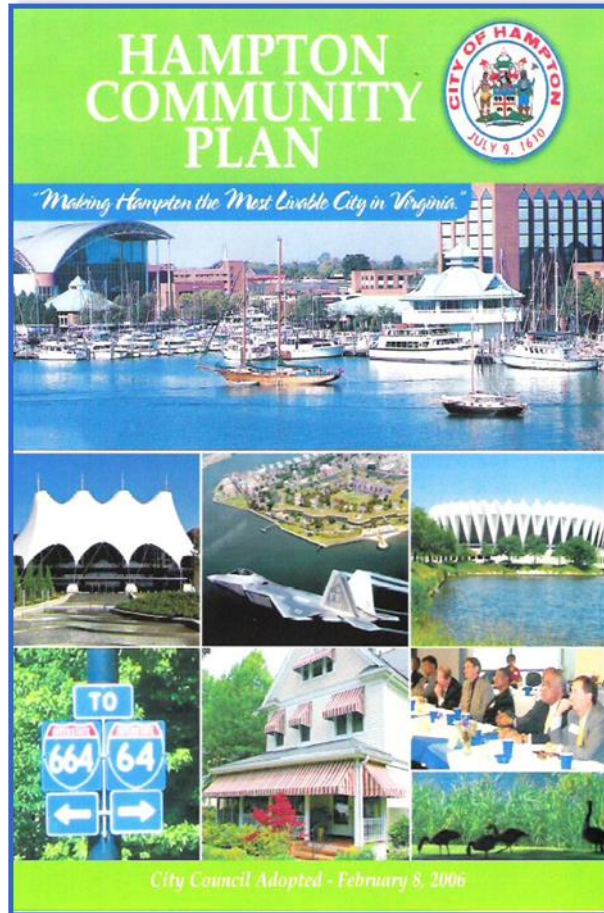
Floor Plan



Land Use Map



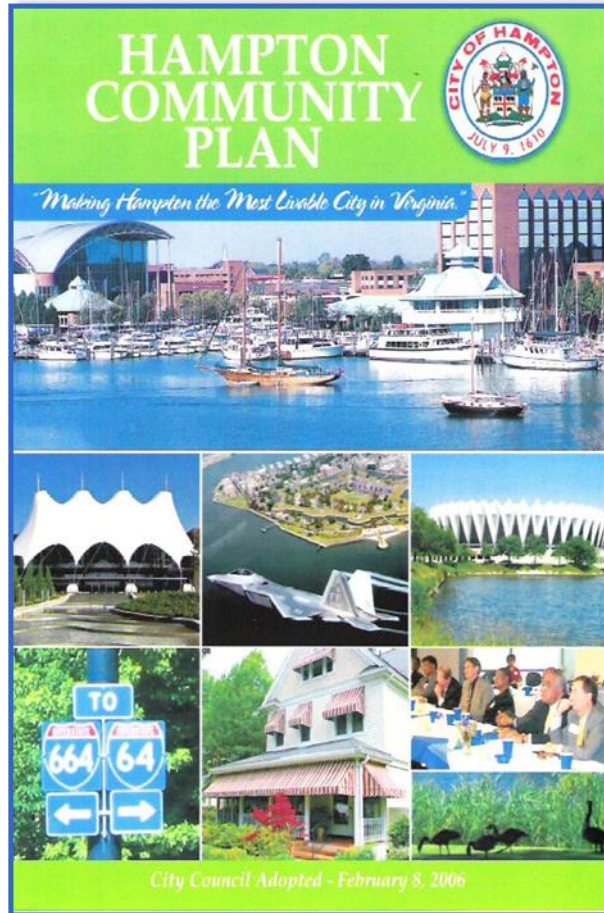
Public Policy



- **LU-CD Policy 4:** Evaluated land use proposals from a regional, city-wide, and neighborhood perspective.
- **LU-CD Policy 8:** Support opportunities for the development and expansion of educational, cultural, medical, research, and military activities that are consistent with the City's vision and goals.

Hampton Community Plan (2006, as amended)

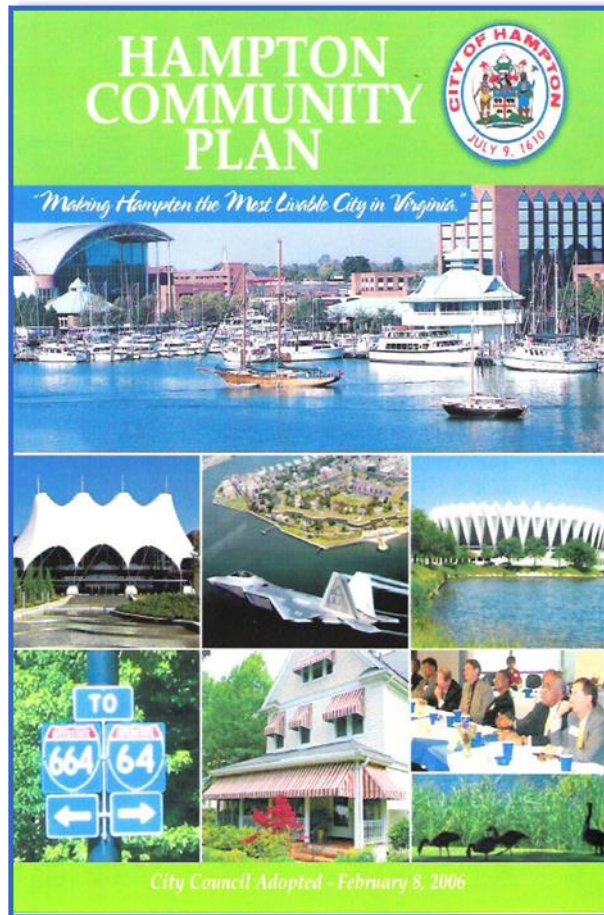
Public Policy



- **CF Policy 47:** Continue to work cooperatively with Federal and State agencies to address needs for health and human service facilities.
- **CF Policy 51:** Provide an adequate level of social and institutional services without overburdening neighborhoods with an excessive concentration of institutional uses aimed to meet the needs of the city as a whole.

Hampton Community Plan (2006, as amended)

Community Facility Objectives



Hampton Community Plan (2006, as amended)

- **1:** Provide community facilities that are targeted to address the needs of both city residents and visitors.
- **3:** Provide facilities that are responsive and adaptable to changing needs.
- **5:** Promote partnerships with private, non-profit, and government agencies in the provision of community facilities.
- **9:** Address the needs of special populations including low income, youth, elderly, and persons with disabilities.
- **14:** Promote maintenance, reinvestment, preservation, adaptive reuse, and renewal of existing facilities and sites.

Security Plan

- Electronic Key Access
- Internal/External security cameras
- Security System
- 24/7 Security Patrol
- Separate visitor parking
- One-way traffic loop around building
- Onsite CIT Officer

Recommended Conditions

- Issuance of Permit
- Capacity
- Certification
- Security Plan
- Landscaping/Fencing/Lighting
- Signage
- Coliseum Central Design Guidelines
- Nullification
- Revocation

Analysis

- Consistent with specific polic(ies)
- Individuals in crisis receive needed specialized healthcare
- Relief for Hampton Police Division
- Comprehensive Security Plan

Recommendation

Planning Commission & Staff
recommend **approval** of
No. 22-0346 with eleven (11)
conditions