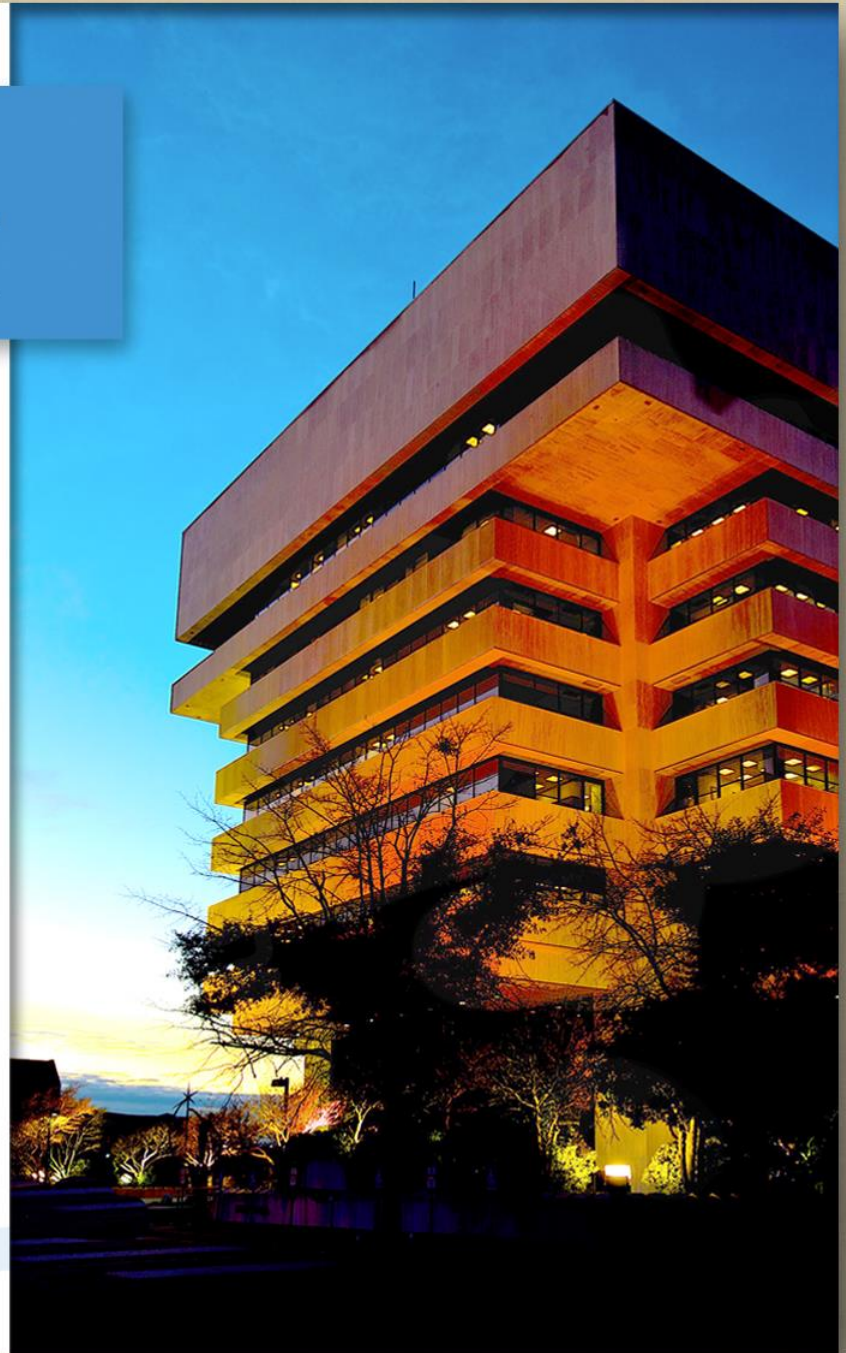


HAMPTON VA

Use Permit No. 18-00004
1184 & 1186 Big Bethel Road
Sandra Mitcham

City Council
May 9, 2018



Application

Use Permit for a Commercial Day Care 2



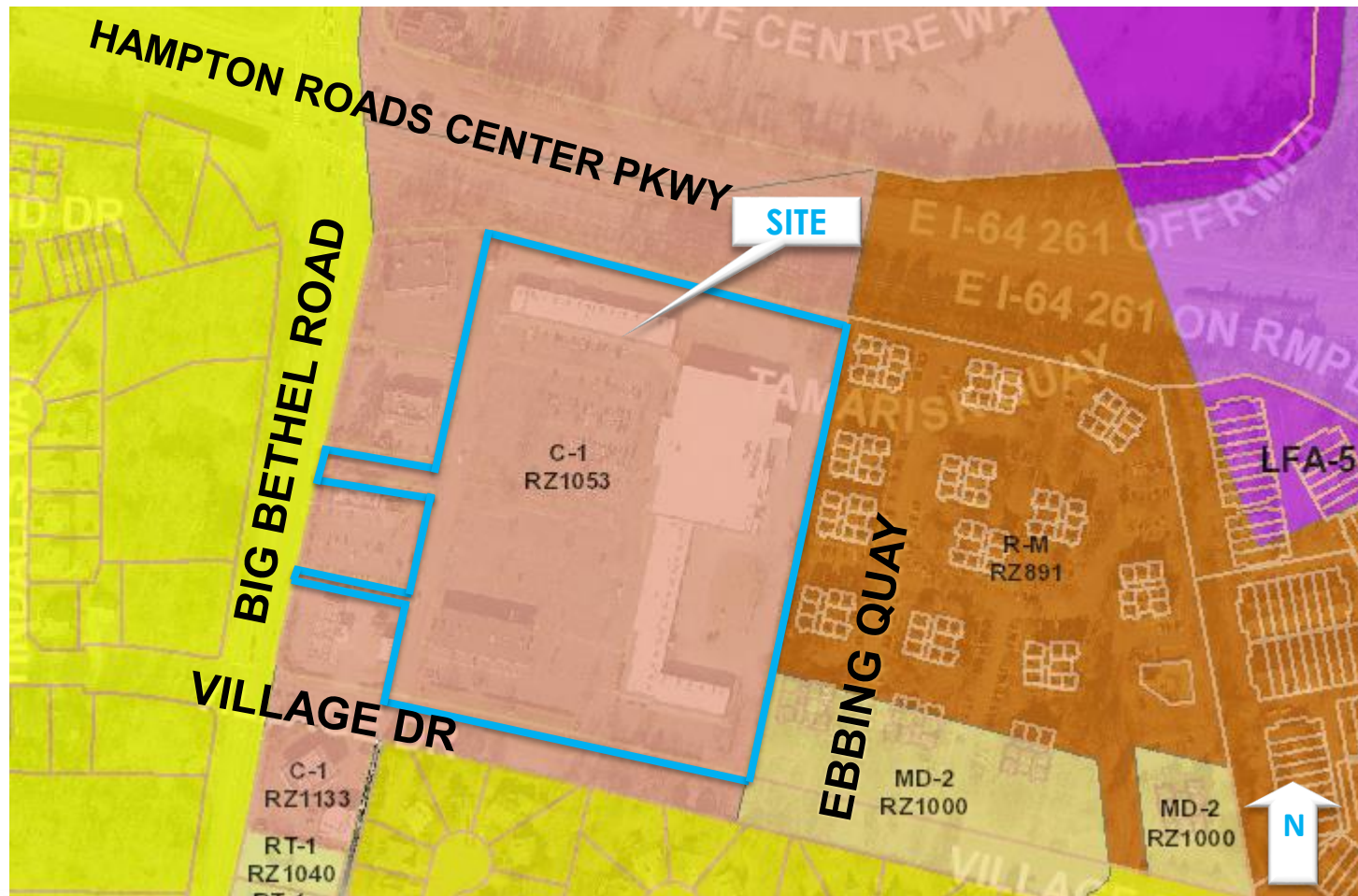
Location



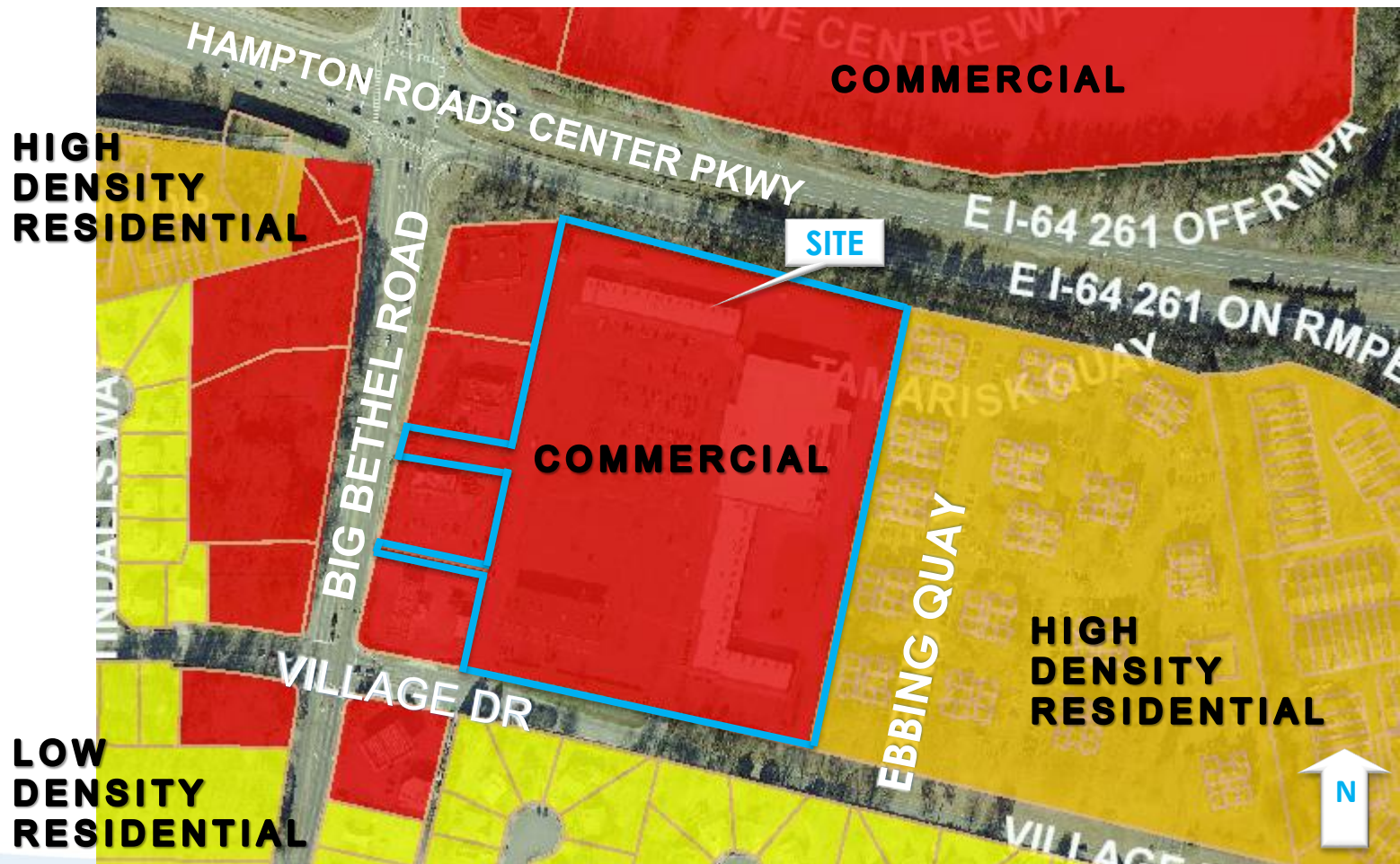
Location



Zoning

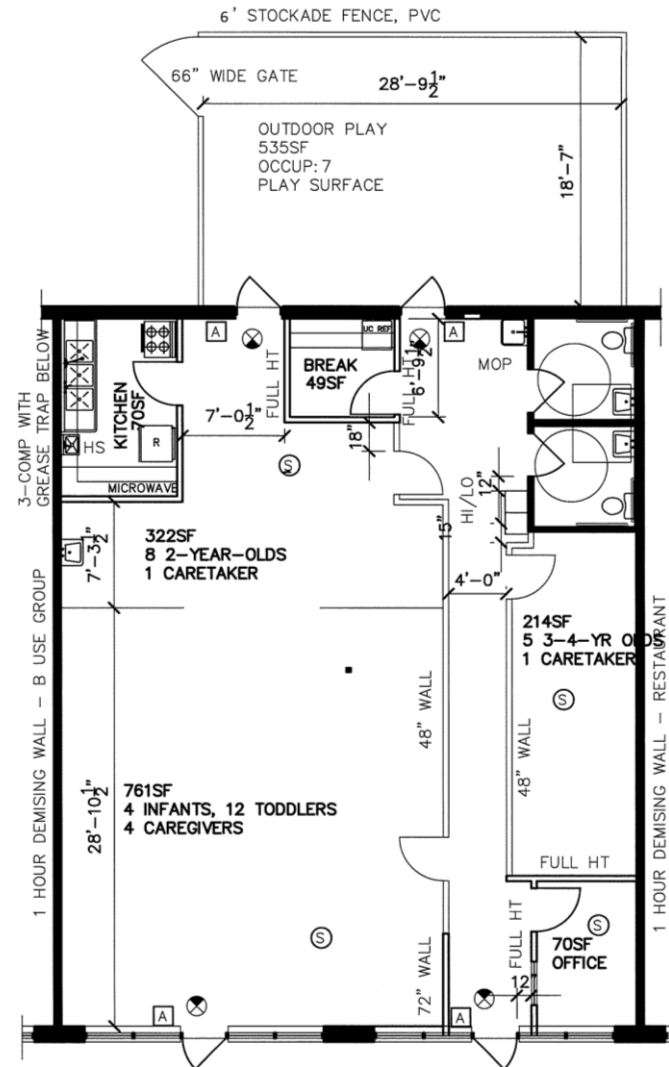


Future Land Use Plan

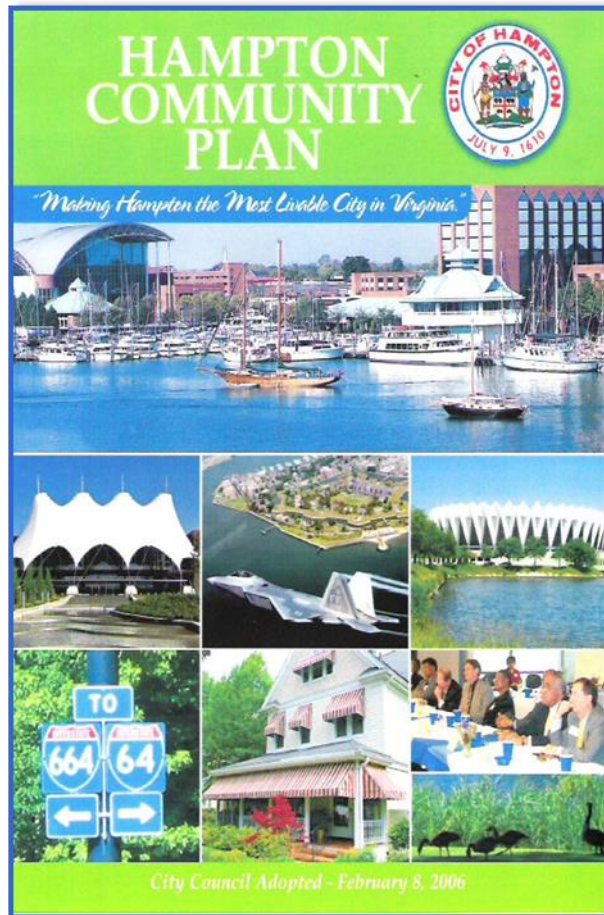


Proposal

- 37 occupants
- Three classrooms, one office, breakroom, kitchen, two bathrooms
- Playground at rear of facility with 6 ft fence



Public Policy: Hampton Community Plan



“Hampton's children and youth will thrive and succeed in a caring community”

- Continue to provide high quality community services and facilities in Hampton's neighborhoods.
- Facilitate greater participation in the workforce by promoting quality daycare services, flexible job schedules, job sharing, home occupations, increased accessibility of jobs, and other creative solutions.

Hampton Community Plan (2006, as amended)

Conditions

- Capacity
 - Outdoor Play Area Requirement
 - Ledger
 - Hours of Operation
 - Revocation
 - Nullification
- 

Recommendation

Staff recommends approval of
Use Permit 18-0152 (18-00004)
with 10 conditions

Planning Commission
recommends approval of
Use Permit 18-0152 (18-00004)
with 10 conditions