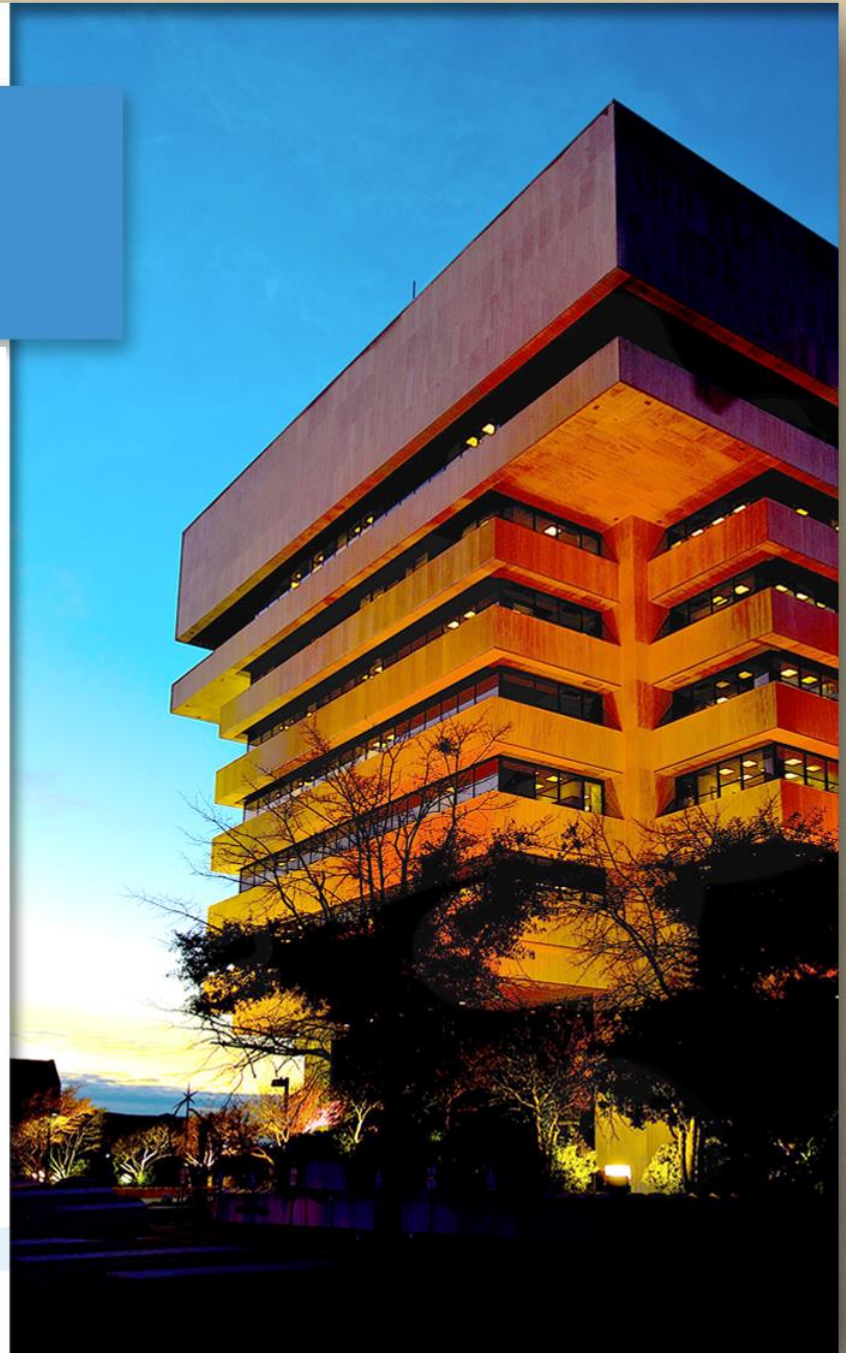


HAMPTON VA

Use Permit 19-0151

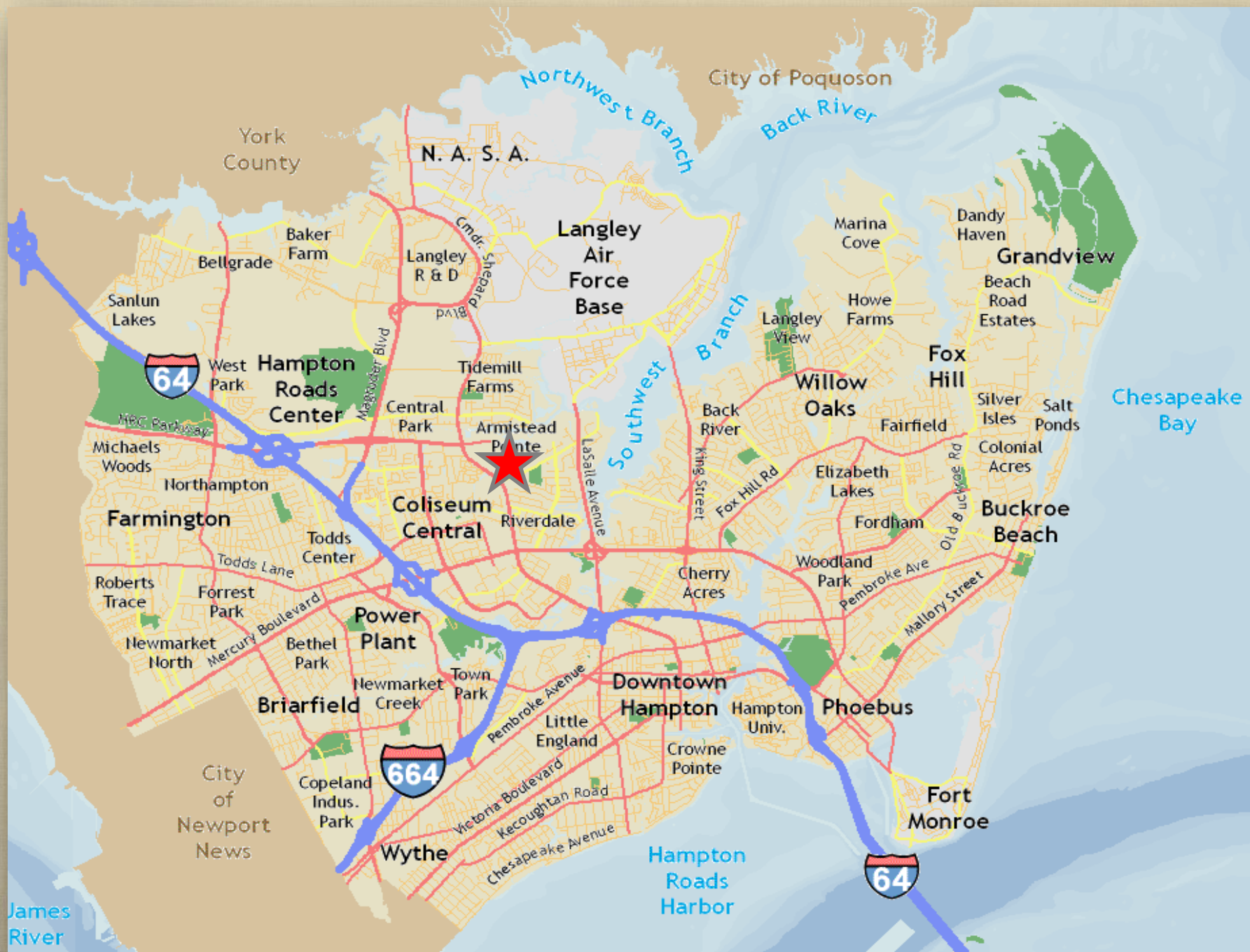
**2510 and 2512 Armistead Ave.
Pastor Gretchen Nelson**

**City Council
May 8th, 2019**



Application

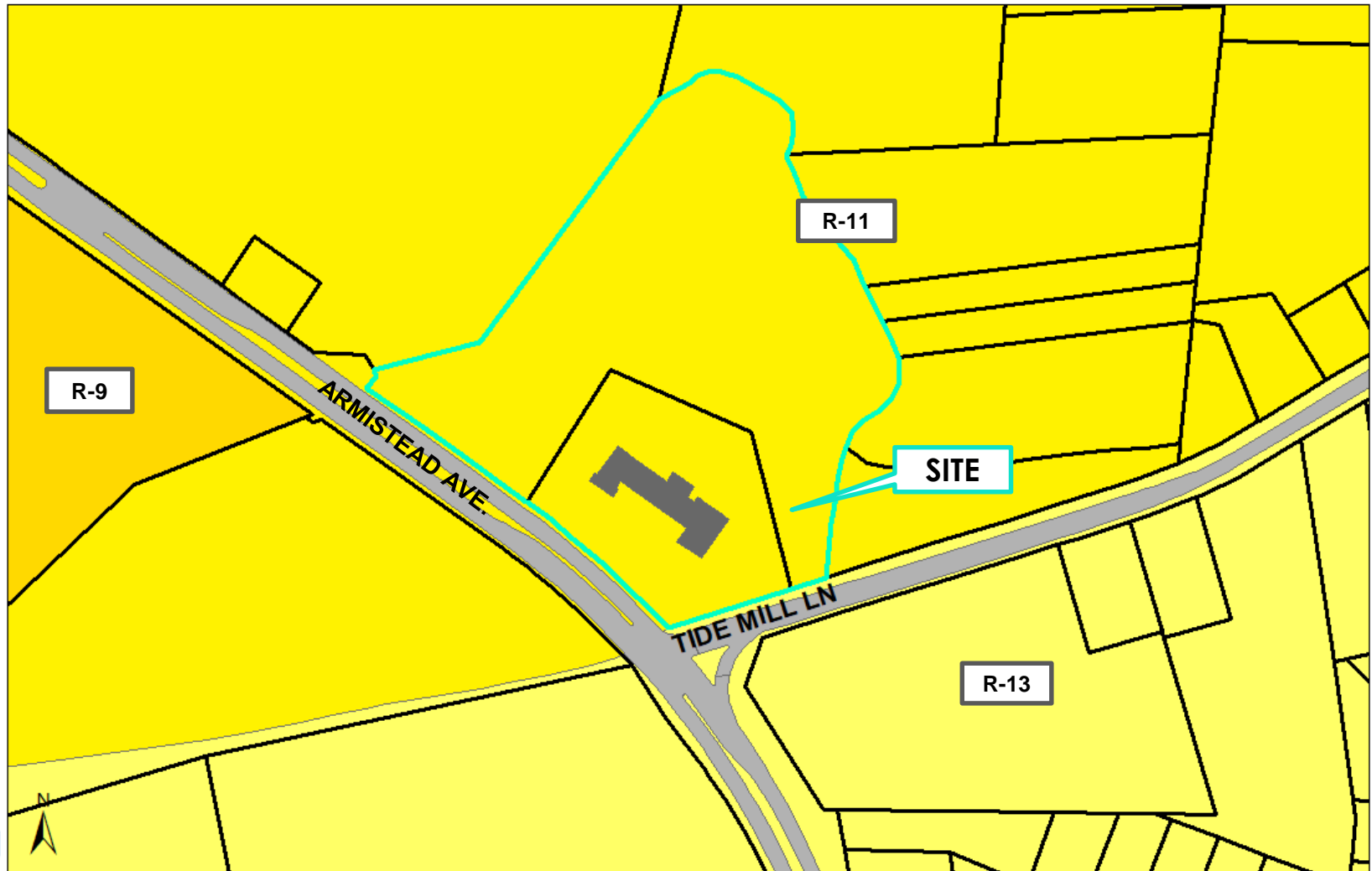
Use permit to allow for a Commercial Day Care 2



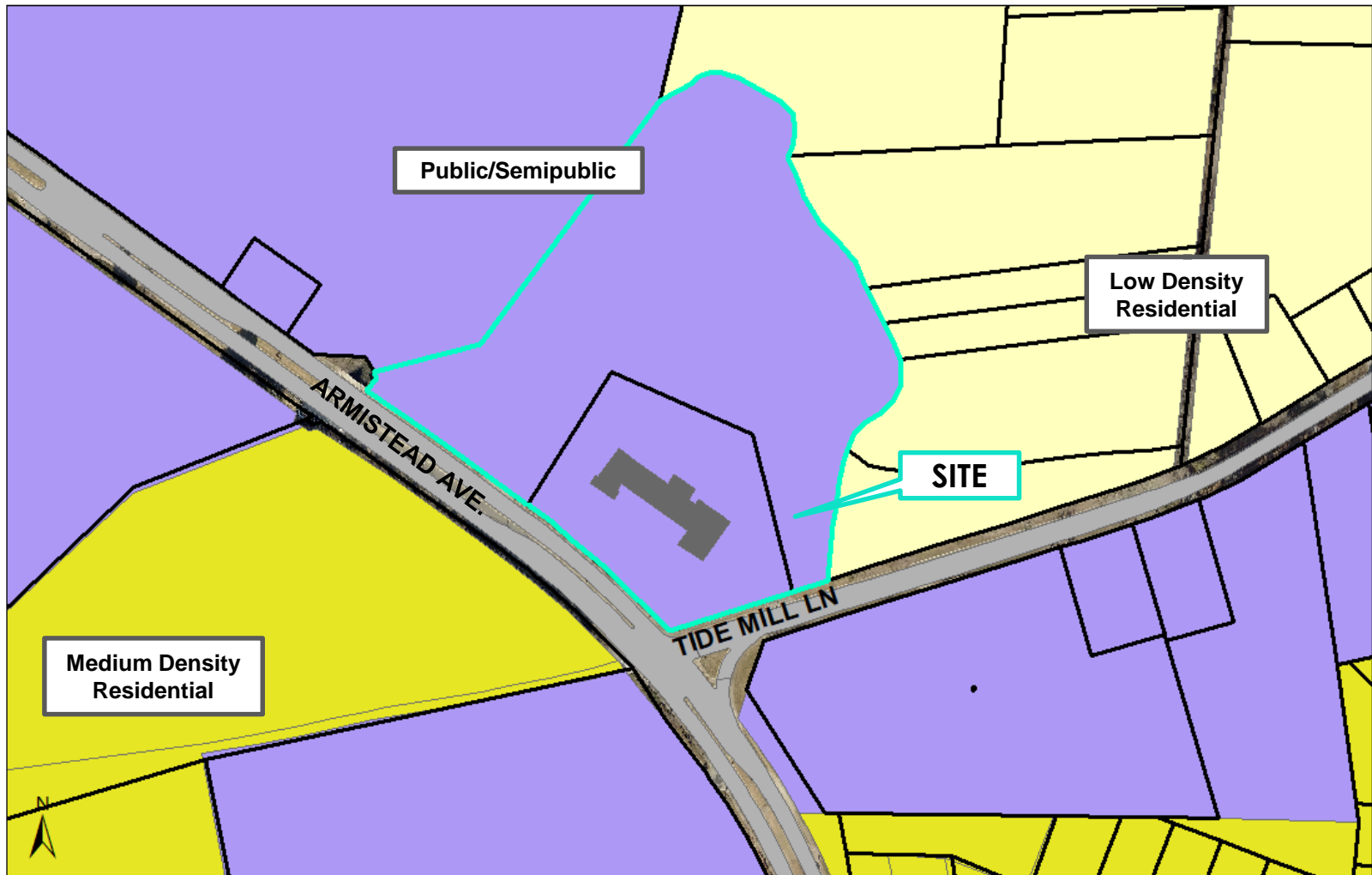
Location



Zoning



Future Land Use Plan

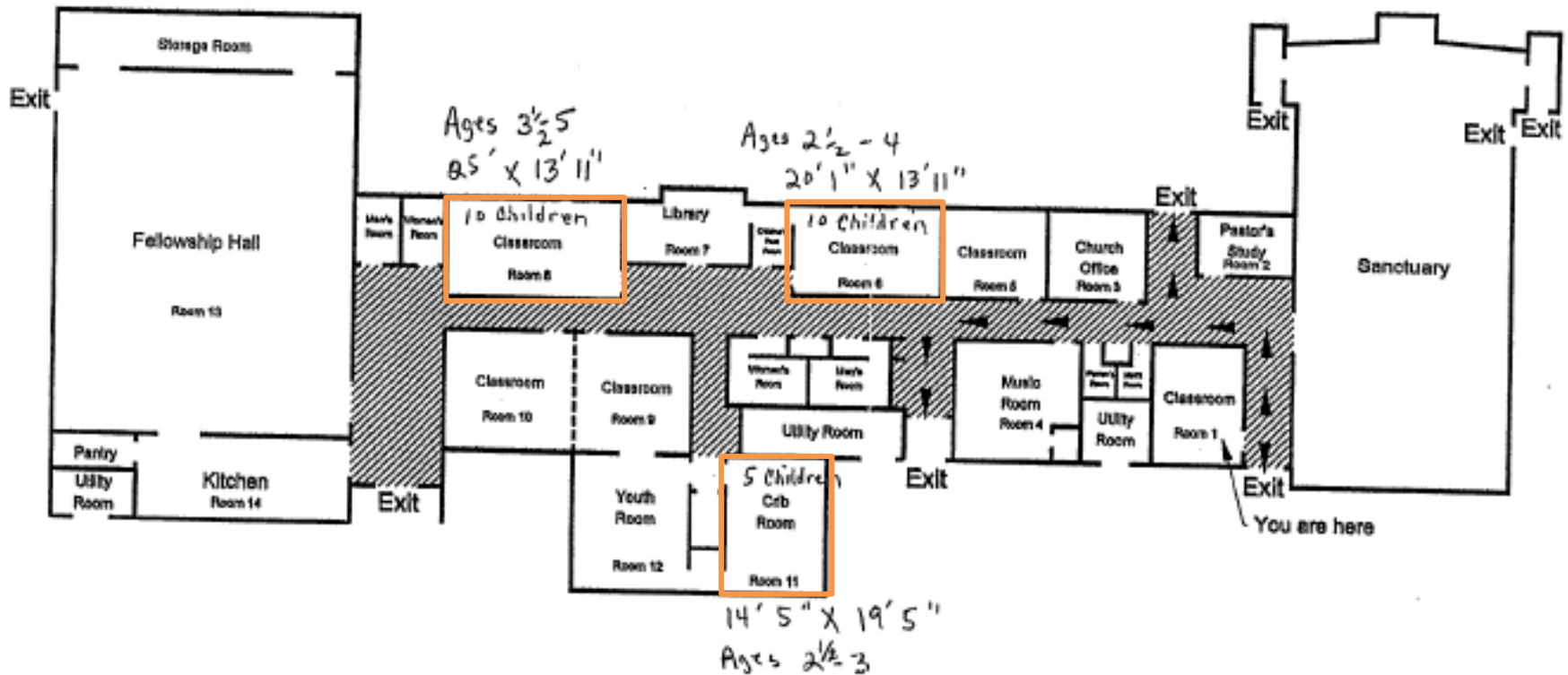


Proposal

- Commercial Day Care 2
 - Monday-Saturday
 - 6 AM - 7 PM
 - 908 sq. ft. (3 classrooms)



Floor Plan

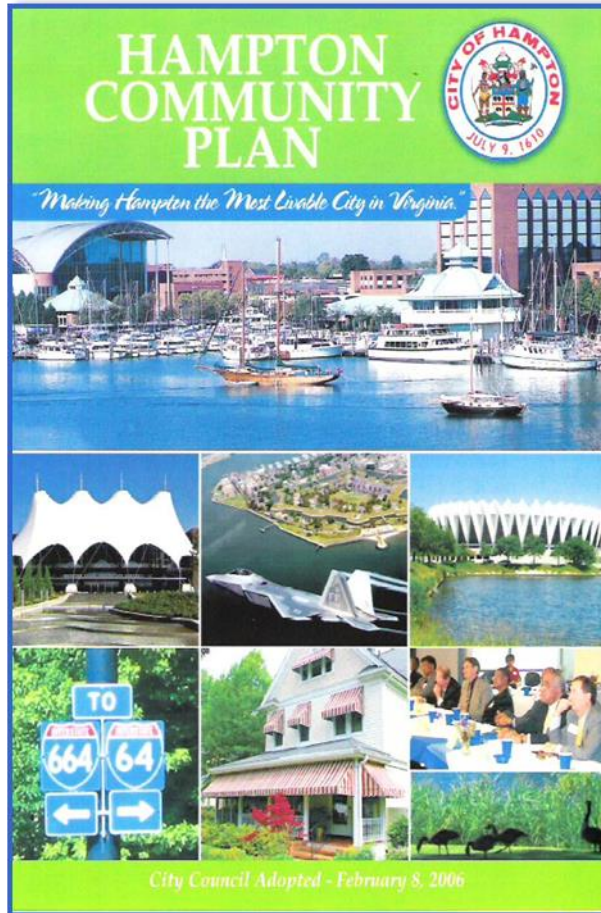


**Wesley United Methodist Church
Evacuation Routes**

The Property



Public Policy: Hampton Community Plan



Hampton Community Plan (2006, as amended)

“Hampton’s children and youth will thrive and succeed in a caring community”

- Continue to provide high quality community services and facilities in Hampton’s neighborhoods.
- Facilitate greater participation in the workforce by promoting quality daycare services, flexible job schedules, job sharing, home occupations, increased accessibility of jobs, and other creative solutions.

Use Permit Conditions

- Location
- Hours of Operation
- Parking
- Capacity
- Ledger
- Outdoor Play Area



Recommendation

Staff recommends ***APPROVAL*** of
Use Permit 19-0151
with 11 conditions

Planning Commission recommendation will be voted for on May 7th,
concurrent with City Council